

TOP of the PARK

Special Attraction

strange fruit

THE THREE BELLES

OUTDOOR SPECTACLE | FAMILY

Don't miss the much-anticipated return of Australia's Strange Fruit to the lawn of Ingalls Mall this season.

Strange Fruit produces and performs a remarkable style of work that fuses theatre, dance and circus on a unique elevated medium. Perched atop 5-metre high flexible poles, the troupe delivers a sublime performance, bending and swaying in the air, captivating and engaging the audience in absolute fascination.

In the company's latest production, The Three Belles transport the audience into a dreamlike world of period charm and frivolity through a whirlwind of dance and movement.

presented by
the festival 5000

ANN ARBOR

Presented by

TOP OF THE PARK
INGALLS MALL

June 30 | 7:30 pm & 9:30 pm

July 1-2 | 4:30 pm & 8:30 pm

Admission: **Free**
Suggested donation of
\$3 per individual or
\$5 per family is encouraged.



WWW.ANNARBORSUMMERFESTIVAL.ORG

ANN ARBOR
SUMMER
FESTIVAL 2011
Come one COME ALL.

FESTIVAL GUIDE



JUNE 17 - JULY 10, 2011 - WWW.ANNARBORSUMMERFESTIVAL.ORG

FROM *the* DIRECTOR



The Ann Arbor Summer Festival is an extraordinary convergence of people, place, and performance. For 21 amazing summer nights, we transform Ann Arbor into a lively arts destination, a place where friends, family, neighbors, and visitors can connect and share in a celebration of artistic inspiration, creativity, and community spirit.

Over 100 events are presented in a program embracing music, dance, comedy, film, theater, circus and street arts, and family entertainment. With an array of ticketed and free events, regional premieres and Ann Arbor exclusives, I invite you to join us during this 28th season to see some of the best artists from around the world and from our own backyard.

So step right up, folks, you won't believe your eyes.

Robb

Robb Wouffe
Executive Director, Ann Arbor Summer Festival



TABLE *of* CONTENTS

- 10 Mainstage
- 20 Top of the Park
- 22 Attractions
- 26 Activities
- 30 Outdoor Cinema
- 38 Special Programs
- 44 Support
- 46 Sponsors & Media Partners
- 48 Donors
- 60 Board & Staff

Festival Photography by Myra Klarman
Guide Design by Phire Branding Co.



TICKETS: WWW.ANNARBORSUMMERFESTIVAL.ORG # 734.764.2538



FROM
the UNIVERSITY

From Steve Martin and the Capitol Steps, to k.d. lang and Andrew Bird, the 2011 Ann Arbor Summer Festival delivers artistry, melodies and humor for audiences of all ages and interests.

The University of Michigan is proud to host these engaging performances and more at the Power Center for the Performing Arts, Hill Auditorium and the Lydia Mendelssohn Theatre, as well as the grassy surroundings of Ingalls Mall.

Thank you for joining us during our truly wonderful Ann Arbor summer tradition.

Sincerely,

Mary Sue Coleman
President, University of Michigan



FROM
the CITY

The Ann Arbor Summer Festival is our town's favorite summer event! Don't miss the star quality performances that will be headlining the 2011 season during the 28th annual Summer Festival.

The festivities at the Top of the Park draw friends and families together to dance in the street and relax in the park. Come out and enjoy the best local and regional bands to be found anywhere. Come down to dance, converse, share a movie under the stars and experience all that Ann Arbor has to offer.

Best wishes for a great summer in Ann Arbor.

John Hieftje
Mayor, City of Ann Arbor



FROM
the BOARD

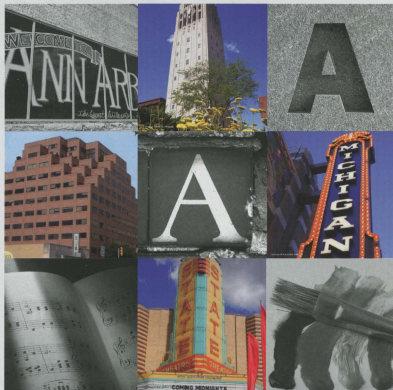
As Michigan residents, the seasons shape many of our activities. We hold dear those bright sunny days that turn into glorious summer evenings. Enriching those valued moments are the families, friends and fun of the Ann Arbor Summer Festival.

The Summer Festival manifests the best of a productive collaboration between the University of Michigan and the City of Ann Arbor; creatively crafted by an outstanding staff, dozens of volunteers, an active Board and generously supported by hundreds of friends and sponsors.

Your tickets to a Mainstage event, or donations at Top of the Park help ensure that live music and dancing will fill those summer nights, movies will be watched under the stars, and special moments are renewed.

Welcome to the 2011 Summer Festival.

Jim Kosteva
Chair, Festival Board of Trustees



Proudly supporting the

ANN ARBOR SUMMER FESTIVAL

Your contribution to music and the arts enriches our culture and our community.

MILLER
CANFIELD

millercanfield.com

IT'S MORE THAN JUST THE LAW.

Celebrating 27 Years in Ann Arbor

TICKETS: WWW.ANNARBORSUMMERFESTIVAL.ORG @ 734.764.2538



mission

The Ann Arbor Summer Festival's mission is to present a world-class celebration of arts and entertainment that enriches the cultural, economic, and social vitality of the region.

core values

Excellence • Diversity • Relevance

vision

The Ann Arbor Summer Festival aspires to be a nationally recognized arts festival and enduring local treasure — a widely anticipated, interactive hub of creative and community energy.

a community tradition

The Ann Arbor Summer Festival is an exhilarating celebration of performing arts, outdoor entertainment, and community spirit. A boutique music and arts festival, the three-week gathering offers dozens of performances, activities, exhibitions, and screenings representative of the best in music, dance, comedy, film, street arts and family entertainment.

Established as an equal partnership between the City of Ann Arbor and the University of Michigan, the Ann Arbor Summer Festival presented its first full season in 1984. What began with a vision for a summer cultural event that would connect audiences with world-class artists, bring community together, and showcase the city and state as a major arts destination, now flourishes as one of the leading performing arts festivals in the country.

Now entering its 28th season, the Ann Arbor Summer Festival produces two concurrent programs, one indoor and one outdoor, at various venues and spaces across the University of Michigan campus and in downtown Ann Arbor. The indoor Mainstage series includes ticketed performances of world-class music, dance, theater and comedy. The outdoor program, Top of the Park, is held along a beautiful campus green and offers admission-free concerts, movies under the stars, open-air spectacles and unique family attractions.

TICKETS: WWW.ANNARBORSUMMERFESTIVAL.ORG or 734.764.2539

35 PRACTICE AREAS.
5 INDUSTRY TEAMS.
3 LOCATIONS.

ONE EXTREMELY
EFFICIENT LAW FIRM.

SMITH HAUGHEY
RICE & ROEGGE

ATTORNEYS AT LAW

734-813-8000 www.shrr.com

SH

ANN ARBOR

GRAND RAPIDS

TRAVERSE CITY



BUILD YOUR *My* FESTIVAL Experience

+2MYFESTIVAL

Come to www.annarborsummerfestival.org and sign up to create your own Festival experience. Browse acts, add them to your account, and create a customized calendar of events from the Mainstage acts to Top of the Park and beyond. It's new this year.

SHARE YOUR Festival EXPERIENCE



Send your photos or video to share@a2sf.org. We may post them on our homepage for all to see.

TICKETS: WWW.ANNARBORSUMMERFESTIVAL.ORG 873.764.2538

HONIGMAN

We are happy to support the
2011 Ann Arbor Summer Festival



Our Attorneys Who Work or Live in Ann Arbor

<i>Daniel Adams</i>	<i>Sean Etheridge</i>	<i>Kristopher Korvun</i>
<i>Fernando Alberdi</i>	<i>Tom Forster</i>	<i>Tara Mahoney</i>
<i>Jennifer Anderson</i>	<i>David Gubbini</i>	<i>Cy Moscow</i>
<i>Christopher Ballard</i>	<i>Carl Herstein</i>	<i>David Parsigian</i>
<i>Maurice Binkov</i>	<i>Richard Hoeg</i>	<i>Shawn Strand</i>
<i>Cindy Botl</i>	<i>Ann Hollenbeck</i>	<i>Bea Svedlow</i>
<i>Don D'Amato</i>	<i>Michael Huget</i>	<i>Bill Winsten</i>
<i>Audrey DiMarzo</i>	<i>Barbara Kaye</i>	

For more information, please contact David Parsigian at 734.418.4250 or DParsigian@honigman.com.

HONIGMAN MILLER SCHWARTZ AND COHN LLP
DETROIT • ANN ARBOR • LANSING • OAKLAND COUNTY • KALAMAZOO
www.honigman.com

MAINSTAGE

6/18



andrew bird w/ HALEY BONAR

POPE | ROCK | INDIE

Few artists better exemplify the term chamber pop than violinist, whistler, songwriter, and multi-instrumentalist Andrew Bird. A classically trained violinist, former swing jazz musician and now art rock virtuoso, Bird is one of the most imaginative and distinctive voices making music today. Haley Bonar opens.

Saturday, June 18 | Power Center, 8:00 pm
\$45, \$40, \$35, \$30

sponsor **PHIRE**
BRANDING COMPANY

media **ann arbor's 107.1**
one

6/21



trombone shorty & orleans avenue

w/ THE MACPODZ

NEW ORLEANS JAZZ | FUNK | SOUL

Equally adept on the trombone and trumpet, Troy "Trombone Shorty" Andrews is a man to be reckoned with on both. He draws unqualified respect of some of the most iconic legends in jazz and possesses the ability to deliver a high-energy funk rock show capable of mesmerizing international rock stars. The Macpodz open.

Tuesday, June 21 | Power Center, 8:00 pm
\$35, \$30, \$25, \$20

sponsor **TOYOTA**

media **ann arbor's 107.1**
one **WEMU**

HELPING
ANN ARBOR
THRIVE. //
ONE BRAND
AT A TIME.

Phire Branding Company celebrates all Ann Arbor has to offer. We support the Ann Arbor Summer Festival through traditional, digital and social efforts. We also are involved with more than three dozen Ann Arbor businesses, non-profits and initiatives. Welcome to the Festival. Enjoy the show.

PHIRE
BRANDING COMPANY

TO LEARN MORE,
VISIT US AT PHIREBRANDING.COM.

TICKETS: WWW.ANNARBORSUMMERFESTIVAL.ORG @ 734.764.2538

MAINSTAGE



the moth mainstage

CO-PRESENTED BY MICHIGAN RADIO

STORYTELLING | SPOKEN WORD

The Moth, New York's hottest literary phenomenon, is an acclaimed nonprofit organization dedicated to the art of storytelling. Having presented sold-out shows for over ten years, The Moth Mainstage descends on Ann Arbor with an all-star line-up of favorite tellers and local gems, each with a ten-minute story told live without notes.

Thursday, June 23 | Power Center, 8:00 pm
\$40, \$35, \$30, \$25

Hosted by Rudy Rush, with stories by:
Josh Axelrad, Allison Downey, Holly Hughes,
Mark Katz, and Jeffrey Solomon

co-presented by



steve martin *with*

THE STEEP CANYON RANGERS

POLE | ROOTS | AMERICANA

Actor, comedian and writer Steve Martin has become the surprise ambassador of bluegrass. Playing alongside North Carolina's broadly talented Steep Canyon Rangers, Martin delivers an unforgettable evening filled with bright, energetic bluegrass and uproarious interludes in support of his latest release, Rare Bird Alert.

Saturday, June 25 | Power Center, 8:00 pm
\$75, \$70, \$65, \$55

sponsor



media WEMU 89.1

Non-local banks
think Top of
the Park is a
documentary
about squirrels.

At Bank of Ann Arbor, we know Ann Arbor inside and out. That's why we're pleased to continue to support a local favorite, the Ann Arbor Summer Festival. 734-662-1600 or boaa.com.
How can we help you?



Member FDIC

TICKETS: WWW.ANNARBORSUMMERFESTIVAL.ORG @ 734.764.2538

MAINSTAGE



6/29



los lonely boys

with ALEJANDRO ESCOVEDO & THE SENSITIVE BOYS

BLUES | POP | ROCK

Two of the most revered artists in American roots music — fiery Texas blues-rockers Los Lonely Boys and genre-bending singer-songwriter Alejandro Escovedo — join forces for a double-bill of emotionally charged music steeped in the rich musical traditions of Texas, the American Southwest, and Mexico.

Wednesday, June 29 | Power Center, 8:00 pm
\$45, \$40, \$35, \$30

sponsor



maxx ann arbor's 107one

7/1



k.d. lang & the siss boom bang

with THE BELLE BRIGADE

POP | ROCK | ALT-COUNTRY

Canadian superstar k.d. lang returns to the Hill Auditorium to headline a spectacular evening of new songs and soulful classics. The winner of four Grammy Awards and eight Juno Awards, k.d. lang's powerful, sultry vocals and astounding range have made her one of the most sought after live performers for the past 25 years. The Belle Brigade opens.

Saturday, July 1 | Hill Auditorium, 8:00 pm
\$75, \$65, \$55, \$45, \$35

sponsor



maxx ann arbor's 107one WEMU 93.1

GRAB A PINT OF GREAT TASTE.



28th Year
Sponsor!



300 Willian Ave. Ypsilanti, MI
www.onwbeer.com

MAINSTAGE



taylor mac in concert

"COMPARISON IS VIOLENCE OR THE ZIGGY STARDUST MEETS TINY TIM SONGBOOK"

CABARET | PERFORMANCE ART | FRINGE

The fabulous Taylor Mac draws from the traditions of drag and performance art to create a style all his own. Combining dramatic flair, searing satire, poignant honesty, and—of course—plenty of glitter, Mac's newest show was born after dozens of reviewers commented that he was a cross between David Bowie's alter ego and the cult figure Tiny Tim. Recommended for mature audiences.

Sat., July 2 | Lydia Mendelsohn Theatre, 8:00 pm
\$25 General Admission



the capitol steps

COMEDY | POLITICAL SATIRE

Answering the call for more civil discourse, these former Congressional staffers' brilliant song parodies and hilarious sketches lampoon up-to-the-minute issues, events, and personalities, poking fun at both sides of the aisle. Join us for this Fourth of July festival tradition.



Monday, July 4 | Power Center, 5:00 pm & 8:00 pm
\$45, \$40, \$35, \$30



The Perfect Quartet



• Audi • Honda • Porsche
• Volkswagen

Voted #1 Best Car Dealership Fourteen Years In a Row (97-10)
by readers of Current Magazine.

Best Auto Dealership Service, the Ann Arbor News Readers and Community
Choice Award 2004, 2005, 2006, 2007, 2008 and 2010.

HOWARD COOPER

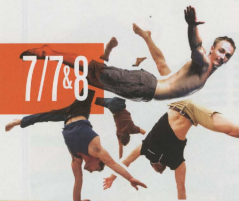
• Import Center •

(734) 761-3200

2575 S. State Street, Ann Arbor, MI 48104
www.howardcooper.com

MAINSTAGE

7/7&8



tom tom crew AN URBAN CIRCUS

CIRCUS | AEROBATICS | FAMILY

Australia's hottest acrobats join forces with modern musical prodigies in a circus-music fusion unlike anything you've ever seen before. The Tom Tom Crew combines stunning aerial acrobatics, beat-boxing and dynamic drumming to create a high-energy show that has wowed audiences from Taipei to Broadway. This is contemporary circus at its most extreme.

Thu., July 7 & Fri., July 8 | Power Center, 8:00 pm
\$40, \$35, \$30, \$25; Kids \$10

sponsor **BENARD L. MAAS
FOUNDATION**



7/9



pink martini

POP | JAZZ | CONTINENTAL

Faunting an intoxicating cocktail of musical styles from around the globe, the 12-piece Pink Martini returns to the festival with their spirited blend of Brazilian samba, '30s Cuban dance, Parisian café sensibility, and world-music flair. Enjoy a splash of orchestral strings, smooth lyrics, and a swig of a cha-cha as this vintage ensemble closes out the festival season.

Saturday, July 9 | Hill Auditorium, 8:00 pm
\$55, \$50, \$45, \$35, \$25

sponsor **DENNIS & ELLIE SERRAS**



CULTURE CAN
TRANSPORT US TO
PLACES NO CAR CAN.

Toyota is proud to support the Ann Arbor Summer Festival and its efforts to celebrate our diverse community with Global Parties and international programs. Visit: annarborsummerfestival.org

TOYOTA

toyota.com/community

TOP *of the* PARK



Free concerts, free movies, food and drink all available under the summer sky. The festival's Top of the Park is held in conjunction with the Mainstage performances, providing a forum for great local, regional and national artists in an extraordinary atmosphere. Every night creates a different mood and spirit, and is extremely family friendly. Top of the Park exemplifies everything Ann Arbor: diverse, friendly, kinetic, and unique.

Top of the Park activities are presented at Ingalls Mall, located directly in front of the Horace H. Rackham School of Graduate Studies on Washington Street near the Burton Memorial Tower. The festival opens at 6:30 pm on Tuesday through Thursday, and at 5:00 pm on Friday through Sunday. Top of the Park is closed on Monday nights.

Admission to Top of the Park is free, although a suggested donation per visit of \$3 per individual or \$5 per family is encouraged.

first friday

presented by

STATE STREET

opening night celebration FRIDAY, JUNE 17

The Ann Arbor Summer Festival's opening night celebration is the not-to-be-missed event of the season. Musical performances kick off with Ryan Racine and Lucciana Costa in The Grove, followed by the eccentric Detroit Party Marching Band on the lawn of Ingalls Mall. The festivities continue with the dance music of Superdot and The Sun Messengers. After the sun goes down, the party continues in The Grove with DJ Hardy spinning at After Dark @ Top of the Park.

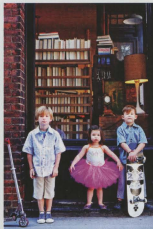
so long sunday

presented by

First
Martin
Corporation

closing night festivities SUNDAY, JULY 10

So Long Sunday is the festival's closing night celebration at Top of the Park, featuring the high-energy music of Siberian surf rockers Igor & Red Elvices, followed by George Bedard & the Kingpins playing his traditional closing night set. The 2011 Ann Arbor Summer Festival caps off with a screening of the '80s dance flick Footloose.



MYRA KLARMAN photography

myrklarman.com / 734.330.1251 / 206 S Main St, #222

View **PLAY.SPACE**, a collection of Myra Klarman's Festival images on exhibit in the Power Center lobby, June 18–July 8.

TOP of the PARK Special Attractions



ENTER & BE AMAZED

amococo

by ARCHITECTS OF AIR

INTERACTIVE | FAMILY | OUTDOOR SPECTACLE

The enormous, interactive sculptures of the UK's Architects of Air have astounded audiences across the globe. Making its Ann Arbor debut for four days on Palmer Field, the festival presents the company's biggest luminarium, Amococo, a walk-through inflatable sculpture featuring a dazzling maze of winding paths filled with radiant light and color.

Please note: Tickets for this special outdoor attraction will only be available on the days of exhibition at the luminarium entrance on Palmer Field, a short walk from the Top of the Park site.

presented by
TOYOTA

PALMER FIELD
NEAR TOP OF THE PARK

June 23-24 | 4:00-9:00 pm
June 25-26 | 12:00-9:00 pm

\$5 per person;
children 3 and under
admitted free

day sponsors
JJR
CALVEY DESIGN MEDIANO +
WORTH DESIGN PARTNERS

We are U.

We're proud to be part of the A² business community...and we've been so for 75 years.

Featuring three of the finest sheet-fed presses, a driven pre-press department, an array of in-house finishing and binding offerings, turnkey mailing services, FSC & SFI green certification, a brand new variable data + digital print system, and a sales and service department to back it all up, we are Ann Arbor's premier printing source.



Rob, Deb + Mark

University Litho • 4150 Varsity Drive, Ann Arbor • 734.973.9414 www.ulitho.com

TOP of the PARK

Special Attractions

body masterpiece

EXTREME FACE PAINTERS

The Body Masterpiece face painters will amaze you as they push the limits of face and body painting to transform kids and adults into colorful creations of art and spectacle. Paintings are free, with a suggested donation of \$5 per face, but reservations are required.

Please call the festival office at (734) 994-5999 ext. 202 for an appointment after June 1st.

Friday-Sunday, June 17-19, 5:00-8:30 pm

presented by **Edward Jones**
Helping Individuals Reach Their Dreams

planet rock

PORTABLE CLIMBING WALL

The festival and Planet Rock partner up to offer festival-goers a portable climbing wall at Ingalls Mall for all ages and abilities. No experience is needed, and the Planet Rock staff will be on-site to assist with the safety procedures. The climbing is free, with a suggested donation of \$5. No reservations required.

Friday-Sunday, June 17-19, 5:00-9:00 pm

detroit fire guild

CIRCUS & VARIETY

Join us every Sunday on the lawn at Ingalls Mall for non-fire circus arts performances by the Detroit Fire Guild, including hoop dancing, juggling, stilt walking, and much more.

Sundays, June 19, June 26, July 3, July 10, 6:00-8:00 pm

TICKETS: WWW.ANNARBORSUMMERFESTIVAL.ORG IN 734.764.2538

Good entertainment. Great radio. Always in season.

89.1

Proud to support the Ann Arbor Summer Festival.

npr + jazz + blues + local news www.aa.org

IF YOU'RE NOT AT YOUR LAST JOB,
SHOULD YOUR 401(k) BE?



To find out why it makes sense to talk with Edward Jones about your 401(k) options, call today.

Jeff Crause
Financial Advisor
2330 E Stadium Suite 4
Ann Arbor, MI 48104
734-975-0981

www.edwardjones.com

Edward Jones
MAKING SENSE OF INVESTINGSM



FAMILY CLIMBING ADVENTURE

Plus programs for kids of all ages:

- ABC for Kids
- Climbing Club
- Summer Camps
- Climbing Team
- Birthday Parties

734.827.2680

82 Aprilli Drive

www.planet-rock.com

Off Jackson Rd. between Wagner & Zeeb

TOP of the PARK Activities



presented by
BENARD L. MAAS
FOUNDATION

An interactive area for our youngest concert-goers, the KidZone tent provides a fun and safe area for children and their parents to discover and explore a wide variety of hands-on activities with different community partners. From getting temporary tattoos, creating homemade instruments, or jamming out rock band style, KidZone offers different nightly activities for families at Top of the Park.

children's activity tent
OPEN NIGHTLY 'TIL 8:00 PM

AADL PRESENTS



Featuring some of the best national indie rockers-turned-kindie rockers playing kid-friendly music and tunes that make parents feel young again. Join us each Sunday at Top of the Park for this free family dance party with rockin' bands for the kiddie set.

The Board of Education	June 19	6:00-7:30 pm
The Boogers	June 26	6:00-7:30 pm
Recess Monkey	July 03	6:00-7:30 pm

Prior to these family rock concerts, enjoy musical sets by some of the area's most popular children's entertainers.



The Deep Fried Pickle Project	June 19	5:00-5:45 pm
Patrick Elkins & RVFB	June 26	5:00-5:45 pm
Ariel & Zoey & Eli, Too	July 03	4:30-5:30 pm
Mr. Seley and The Troublemakers	July 10	5:00-5:45 pm

family concert series
SUNDAY AFTERNOONS



Schedule of 2011 EVENTS

aabookfestival.org

June 22 and 23, All Day
VOLUME Summer Institute for Teachers*
Neutral Zone

June 24, 7:30 PM
"Louder Than a Bomb" Documentary Screening
Helmut Stern Auditorium

June 25, 8:30 AM
Author Breakfast**
Image Café

June 25, 10:00 AM to 3:00 PM
Writer's Conference**
Media Gallery, North Quad
105 S. State Street

June 25, 10:00 AM to 11:30 AM
Show Me A Story: A Creative Children's Play Space
Image Café, 2435 North Quad

June 25, 2:00 PM to 5:00 PM
Street Festival
Ingalls Mall, E. Washington St.
(between S. Thayer and Fletcher St.)

June 25, 5:00 PM
Author's Forum: Act of Grace
A Conversation with Karen Simpson + Robbie Ransom
Image Café

June 26 to July 1, All Day
VOLUME Summer Institute for Students*
Neutral Zone

June 30, 7:30 PM
VOLUME Summer Institute Faculty Readings
Helmut Stern Auditorium

*Register at www.neutral-zone.org **Register at www.aabookfestival.org

Ann Arbor Book Festival • aabookfestival.org • 734-223-7443

Neutral Zone • neutral-zone.org • 310 E. Washington • 734-214-9995

Image Café, 2435 North Quad, 105 S. State Street

Helmut Stern Auditorium, U-M Museum of Art, 525 S. State Street

TOP of the PARK Activities



teen music competition
JUNE 21 @ 7PM

Rock the Mall is a new teen music competition designed to encourage and support a new generation of musicians by offering young artists an opportunity to perform at the festival as well as educating them about the music business.

2011 Teen Competitors:

Gameboi • Going Homeless • Infinity Hour
Kerry Fingerle • Kim Vi • SATURDAY • Scotch Mist

The winner of the one-night competition, determined by a panel of guest judges along with online votes from community, will receive a comprehensive artist development package with the tools necessary to take their musical aspirations to the next level. This grand prize includes access to and services from a dream team of Ann Arbor's leading creative professionals and industry insiders, including:

- Electronic press kit materials designed by Phire Branding Company
- Photo shoot and promotional images by Myra Klarman
- Career coaching with Susie Giang, Vice President/Agent at Fleming Artists
- Studio A2 performance and interview on ann arbor's 107one
- Headlining show at The B-Side, The Neutral Zone's concert venue

Visit www.annarborsummerfestival.org to vote for your favorite band. Online voting begins at 9:30 pm on June 21st, immediately following the competition.

The winner will be announced at Top of the Park on Sunday, July 10, the closing night of the 2011 Ann Arbor Summer Festival.

Program support generously provided by ann arbor's 107one, Fleming Artists, Myra Klarman Photography, The Neutral Zone, and Phire Branding Company.

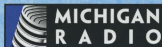
TICKETS: WWW.ANNARBORSUMMERFESTIVAL.ORG @ 734.764.2538

We cover Michigan like orange barrels in summertime.

Michigan Radio is pleased to support the Ann Arbor Summer Festival.

Understand Michigan...

NEWS • POLITICS • ARTS • BUSINESS • ENVIRONMENT



91.7 FM Ann Arbor/Detroit
michiganradio.org

Your NPR news station **npr**



Greenhills School is proud to support the Ann Arbor Summer Festival

www.greenhillsschool.org

TOP of the PARK Outdoor Cinema



outdoor cinema series

WEEKNIGHTS @ 10PM

presented by
ANN ARBOR.COM

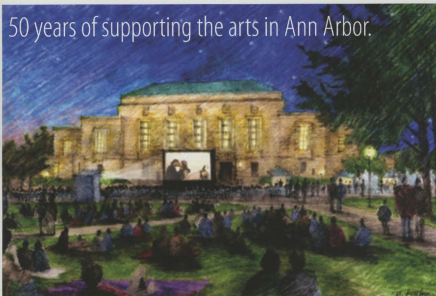
Enjoy movies under the stars on an inflatable screen at Top of the Park. Catch a selection of recent hits, cult classics, and family-friendly films screened in the open air. Be sure to bring comfy blankets, purchase popcorn and other treats from festival vendors, and enjoy cinema al fresco on the green.

- June 19 Despicable Me
- June 21 The Social Network
- June 22 Back to the Future
- June 23 Top Gun
- June 26 How to Train Your Dragon
- June 28 Phantom of the Opera
Silent film with carillon accompaniment
- June 29 Inception
- June 30 Ferris Bueller's Day Off
- July 03 Megamind
- July 05 E.T.: The Extra-Terrestrial
- July 06 An American in Paris
- July 07 Monty Python and the Holy Grail
- July 10 Footloose



The Ann Arbor Film Festival will be showing several select shorts before the main feature on Thursday nights.

50 years of supporting the arts in Ann Arbor.



www.jjr-us.com

JJR

landscape architecture
planning
urban design
civil engineering
environmental science


PERFORMANCES AT POWER CENTER? PRICE OF POWER RISING? WHO'S POWER HUNGRY?

Find the answers at AnnArbor.com. We report the news, and you contribute, too. Sports. Reviews. Our opinions, and yours. Deals. Events calendar and more. Online 24/7. In print Thursday and Sunday.

KNOW+TELL

ANN ARBOR.COM

TOP of the PARK Activities

after dark @ 
top of the park

late-night dj sessions
FRIDAYS & SATURDAYS @ 11PM

presented by



After Dark puts a new "spin" on festival moonlighting. Every Friday and Saturday night, The Grove at Top of the Park hosts a late-night chill lounge after the bands stop playing. An exclusive showcase of guest DJs will be spinning tunes, and drink specials will be offered until midnight in this cozy outdoor lounge. Ages 21+.

- June 17 DJ Hardy
- June 18 Sean Masters
- June 24 Body Rock and Wally Sparks
- June 25 Subvader
- July 01 DJ Special K
- July 02 powdrblu
- July 08 Teddy Ruck-Spin
- July 09 Professor Purple

wind down
wednesday



wine-tasting event
WEDNESDAYS @ 6:30 PM

presented by



Enjoy a wine-tasting event on Wednesdays at Top of the Park. For a \$10 tasting fee, attendees can sample up to three different wines from that evening's featured selection. Tastings include wine, descriptive tasting notes, and wine experts to educate on the featured selections. In addition, drink specials on each of that evening's presented wines in The Grove until 9:00 pm for all participants. Ages 21+.

Wednesdays, June 22, June 29 & July 6 | 6:30-8:00 pm
No reservations needed; just show up.

Limited capacity, so come early!

wines presented by



ANN ARBOR SUMMER FESTIVAL 2011

SCHEDULE OF EVENTS



ANN ARBOR SUMMER FESTIVAL 2011

- Mainstage Shows
- TOP Rackham Stage
- TOP Grove Stage
- TOP Off-Stage Attractions
- TOP Outdoor Movies
- Off-Site Events & Programs

6/17 FIRST FRIDAY

- 5:00pm Early Moviepiece
- 9:00pm Planet Rock Climbing Wall
- 9:00pm Paper Boats
- 9:00pm Lacrosse Clinic
- 7:00pm Detroit Early Marching Band
- 7:30pm Superdot
- 9:00pm The Soul Messengers
- 11:00pm After Dark w/ DJ Andy

6/18 SATURDAY

- 5:00pm Early Moviepiece
- 5:00pm Planet Rock Climbing Wall
- 5:00pm Detroit Yoga
- 6:00pm Agony Strangler
- 6:00pm Thea Kalyvas
- 7:00pm The All Jack Band
- 8:00pm Andrew King @ Power Center w/ig Henry Boner
- 9:00pm Orquesta Sinfonistica
- 11:00pm After Dark w/ Sean Madson

6/19 SUNDAY

- 4:30pm Organ Series @ U-M Music Bldg
- 5:30pm Early Moviepiece
- 5:30pm Planet Rock Climbing Wall
- 6:00pm The CW
- 5:00pm Deep Fried Public Project
- 6:00pm Detroit Fire Guild
- 6:00pm The Heart of Education
- 8:00pm Drive! Sideways
- 10:00pm Deepstate Me

6/20 MONDAY

DAVE MONDAY
Top of the Park Closed

- 7:00pm ■ 12/2 Series @ After Drinking Co.

6/21 TUESDAY

- 7:00pm Rock the West Sun Music Competition
- 8:30pm Tomboyie Sherry & Chrisy Annan @ Power Center w/ig The Macquart
- 10:00pm The Social Network

6/22 WEDNESDAY

- 6:30pm Wind Down Wednesday
- 6:30pm Massage Calligaris & His Ladies Hepatica
- 8:00pm Oktober Festies
- 10:00pm Back to the Future

6/23 THURSDAY

- 4:00pm Architects of Air @ Pioneer Field
- 6:30pm The Earl's AI-Sash Pie
- 8:00pm The Wash Mainstage @ Power Center
- 8:00pm Shy Beard & Serious Wella
- 10:00pm Top Gun

6/24 FRIDAY

- 4:00pm Architects of Air @ Pioneer Field
- 5:00pm Nathan K
- 6:00pm Iron Ball
- 7:00pm Delish/Delish & The Last Days
- 7:30pm I Just Don't Want Summer @ U-M
- 8:00pm The Millionaires
- 11:00pm After Dark w/ Jody Rock & Wally Swartz

6/25 SATURDAY

- 10:00pm Architects of Air @ Pioneer Field
- 5:00pm Retreat: Solid 2
- 5:00pm Spring Cheese
- 6:00pm River Garden Tea
- 7:00pm Forking
- 8:00pm Olive Martini with The Soap Carrot Rangers @ Power Center
- 9:30pm W&M
- 11:00pm After Dark w/ Schneider

6/26 SUNDAY

- 10:00pm Architects of Air @ Pioneer Field
- 4:00pm Organ Series @ U-M Music Bldg
- 5:00pm Retreat: Solid 2
- 5:00pm Patrick Elgers & The Rainbow Vain Family Band
- 6:00pm Detroit Fire Guild
- 6:00pm The Strangers
- 8:00pm Madcat, Kane & Maxwell Street
- 10:00pm How to Train Your Dragon

6/27 MONDAY

DAVE MONDAY
Top of the Park Closed

- 7:00pm ■ 12/2 Series @ After Drinking Co.

6/28 TUESDAY

- 6:30pm Lake Park
- 8:00pm Mike Smith and His Ladies Chabon
- 10:00pm Phoenix of the Open with live auction

6/29 WEDNESDAY

- 6:30pm Wind Down Wednesday
- 6:30pm Lou Gates
- 7:30pm Top Landing Boys @ Power Center w/ig Alexander Escobedo
- 8:00pm Zap Two
- 10:00pm Inception

6/30 THURSDAY

- 6:30pm Nervous But Excited
- 7:30pm Strange Fruit
- 8:00pm W&M @ Summer Institute
- 8:00pm Chris Bellagio
- 9:30pm Fortis Guitars' Day Off

7/1 FRIDAY

- 4:30pm Strange Fruit
- 5:00pm Hannah's World
- 5:00pm Dave Roberts & John Leland
- 7:00pm Lady Sunshine & The K-Band
- 8:00pm Matt & The Sun Never Rang @ U-M @ Power Center w/ig The John Parade
- 8:30pm Strange Fruit
- 9:30pm The Third Coast Kings
- 11:00pm After Dark w/ DJ Special K

7/2 SATURDAY

- 4:30pm Strange Fruit
- 5:00pm Retreat: Capicola
- 5:00pm Anna Marika
- 6:00pm Ann Summers Super Sex Live
- 7:00pm The Rusty Night Band
- 8:00pm Taylor Blue w/ Concert @ U-M Music Bldg
- 8:30pm Strange Fruit
- 9:30pm Thera'sa Dubs
- 11:00pm After Dark w/ Jennifer

7/3 SUNDAY

- 4:00pm Organ Series @ U-M Music Bldg
- 4:30pm Ariel & Zee & Eli, Ten
- 5:00pm Retreat: Madia Luciani Dance
- 6:00pm Detroit Fire Guild
- 6:00pm Brown Monkey
- 8:00pm The Urbanites
- 10:00pm Myzant

7/4 MONDAY

DAVE MONDAY
Top of the Park Closed

- 5:00pm The Capital Stage @ Power Center
- 7:00pm ■ 12/2 Series @ After Drinking Co.
- 8:00pm The Capital Stage @ Power Center

7/5 TUESDAY

- 8:30pm The City and the Contrabands
- 8:00pm The Tenophanes
- 10:00pm The Extra-Terrestrial

7/6 WEDNESDAY

- 6:30pm Wind Down Wednesday
- 6:30pm One Love Reggae Band @ Power Center w/ig Jayson Carter
- 8:00pm Road & the April Fakes
- 10:00pm An American in Paris

7/7 THURSDAY

- 6:30pm Carolyn Shire Group
- 8:00pm Top Gun Cruise @ Power Center
- 8:00pm The Adults
- 10:00pm Marty Pflanz and The Holy Grail

7/8 FRIDAY

- 5:00pm Dean's World
- 5:00pm Smelly Manager
- 7:00pm Nader
- 8:00pm Top Gun Cruise @ Power Center
- 9:00pm Foundation of Funk w/ig Wally Swartz
- 11:00pm After Dark w/ Jody Rock & Wally Swartz

7/9 SATURDAY

- 5:00pm Retreat: Toga
- 5:00pm Jelly Roll
- 6:00pm Sheki!
- 7:00pm The Seeds of Soul
- 8:00pm The Musical @ U-M Music Bldg
- 8:00pm Elio Frit
- 11:00pm After Dark w/ Professor Purple

7/10 SO LONG SUNDAY

- 5:00pm Retreat: Flutes
- 5:00pm Mr. Soley & The Insalubers
- 6:00pm Detroit Fire Guild
- 6:00pm Igor & Red Duvon
- 8:00pm George DeBard & The Rogues
- 10:00pm I will save



BUILD YOUR **My Festival Experience**

+2MYFESTIVAL

Come to www.annarborsummerfestival.org and sign up to create your own festival experience. Browse acts, add them to your account, and create a customized calendar of events from the Mainstage acts to Top of the Park and beyond. It's new this year.

SHARE YOUR Festival EXPERIENCE



Send your photos or video to share@2mf.org. We may post them on our homepage for all to see.

WWW.ANNARBORSUMMERFESTIVAL.ORG

TICKETS

OR CALL 734.764.2538

MAINSTAGE

HOW TO BUY TICKETS

ONLINE: www.annarborsummerfestival.org

IN PERSON: Michigan League Ticket Office, 911 N. University Ave

BY PHONE: 734.764.2538

*There is a \$5.00 handling fee per transaction for all tickets purchased by phone. There is a handling fee of \$2.50-\$4.50 per ticket for all tickets purchased online. Day of show tickets must be purchased in person or by phone.

FLEXIBILITY, SERVICE & CONVENIENCE

TICKET EXCHANGE

Main Stage subscribers (1 or more shows) may exchange tickets free of charge. Non-subscribers may exchange tickets for a \$5.00 per transaction exchange fee. Exchanged tickets must be received by the Ticket Office by mail or in person at least one hour prior to the performance. The value of the tickets may be applied to another festival performance in the season. You may have a photograph of your two tickets. Lost or misplaced tickets cannot be exchanged.

SORRY, NO REFUNDS

Please check your tickets carefully. All ticket sales are final.

TICKET DONATIONS

Unused tickets may be donated to the festival for a tax-deductible contribution up to 15 minutes prior to the performance. Unused tickets that are returned after the performance are not eligible for a tax-deductible contribution. To receive a tax-deductible receipt, please call the festival office at 734.764.2538.

COMMUNITY RUSH

Based on availability, a limited number of \$10 community rush tickets in main-stage sections will be available for select season performances. Rush tickets will only be available 90 minutes prior to the performance at the show venue and must be purchased in-person. Limit two rush tickets per person. **CASH ONLY.** Rush ticket discounts cannot be combined with any other offers or promotions.

*We regret that community rush tickets are not available for Steve Martin, V.I. Spengler or Pink Martini.

LOST OR MISPLACED TICKETS

Call the Ticket Office at 734.764.2538 to have duplicate tickets waiting for you at 9:00 AM. Duplicate tickets cannot be issued. In the event of a double seating situation with duplicate tickets, priority will always be given to the holder of the original ticket.



Venues

- Power Center
- Top of the Park Ingoia Hall
- HSI Auditorium
- Mandelbrot Theatre
- Palmer Field

Parking

- Fletcher Street Structure
- Thayer Street Structure
- Maynard Street Structure
- Liberty Square Structure
- Palmer Structure
- ▶ Path to Palmer Field

Other Landmarks

- I - Rackham School of Graduate Studies
- II - Modern Languages Building
- III - Michigan League Ticket Office
- IV - Burton Memorial Tower
- V - Alumni Center
- VI - North Quad

PLAN YOUR VISIT

CULINARY ROW

Culinary Row at Top of the Park features some of Ann Arbor's favorite eatery and vendors. These food artists will delight specialty menu items that provide you with a selection of delicious meal options, including children's menu items and ready-to-eat picnic packages.

You can purchase a beer in place of wine as you enjoy your favorite band or show. You'll also find bottled water and other products scattered throughout Top of the Park.

2011 FOOD VENDORS

Fish Boatz, Boudoir & Company, Bessie's Grill, Ray's Red Hot, Shiro's Organic Pasta, Shiro's, Sugar Shack and Sweethearts.

2011 BEVERAGE PARTNERS

Occo Cola Bottling Company, O & N, Inc., and U.S. Wine Imports

TIPS & GUIDELINES

For the comfort and safety of all patrons, please respect the following rules:

- *No outside food and beverages - help keep Top of the Park a fun event by supporting our Culinary Row vendors
- *No dogs or other pets allowed, except service assistance dogs
- *Stairs and ramps engaged
- *No smoking, vapes, e-cigarettes, or dashboard falling inside the event area - take e-cigarettes outside throughout the site
- *No alcohol beyond the fenced beverage garden area
- *No smoking on outdoor lawns or stages
- *No smoking on the terraces
- *No unattended smoking

*Be sure to bring sunscreen, hats, lawn blankets, and a photo ID for access to the beverage garden.

Please do not bring or outside food or drink to the festival. When you purchase these items from Top of the Park vendors, you are supporting the event and helping to keep it admission-free.



The things we do for *red, white, and blue.*

A strong community creates a bond between us all. It fosters friendship, kindness, brotherhood, and well-being. And most importantly, we accomplish more together. No one better understands that than we do. That's why we support the Ann Arbor Summer Festival. Like you, we know what it takes to reach your dreams, and we'll do our best to help you achieve them.

Fifth Third Bank proudly supports the Ann Arbor Summer Festival.



FIFTH THIRD BANK

The things we do for dreams.™

53.com

Fifth Third Bank, Member FDIC. Equal Housing Lender.

TICKETS: WWW.ANNARBORSUMMERFESTIVAL.ORG OR 734.764.2538

TOP of the PARK

Activities



presented by
TOYOTA

To celebrate the diverse community we serve, each year we throw a series of Global Parties at Top of the Park that spotlight different ethnic backgrounds and cultural traditions. Featuring free outdoor performances by local artists, these nights showcase lively music, street dancing, and cultural entertainment.

June 22 **Monsieur Guillaume and His Zydco Hepcats | October Babies**
June 29 **Les Gates | Zap Toro**
July 6 **One Love Reggae Band | Rupa & the April Fishes**

WEDNESDAYS @ 6:30 PM

workshops & artist chats

JUNE 19, JUNE 25 & JULY 6

SONGWRITING WORKSHOP: WRITE SONGS THAT ROCK!

June 19 **Ann Arbor District Library, Multipurpose Room 1:00-2:30 pm**
The Seattle-based band The Board of Education that are featured in the Library's summer reading kick-off event at Top of the Park will make a special visit to AADL for this songwriting workshop. BOE lead singer and children's novelist, Kevin Emerson, and his bandmates will give you some great songwriting tips and help you write your own hit song. Grades K-12.

Co-presented with Ann Arbor District Library and 826Michigan

ARTIST DISCUSSION: THE CREATION OF AMOCOCO

June 25 **Pittsfield Branch Library 10:00-11:00 am**
Join Architects of Air exhibition manager James Stephenson for an in-depth discussion on the design, fabrication and installation process used by the renowned British company for its inflatable, walk-in sculptures. The company's Amococo luminaurium is on exhibit at Palmer Field from June 23-June 26.

Co-presented with Ann Arbor District Library

ACROBATIC & TUMBLING DEMONSTRATION

July 6 **Lawn of Ingalls Mall, Top of the Park 7:30-8:00 pm**
Mainstage artists Tom Tom Crew give a demonstration of daredevil acrobatics and tumbling as a free promotional teaser for their big indoor shows on July 7 and July 8 at the Power Center. These Aussie acrobats join forces with modern musical prodigies in a circus-music fusion unlike anything you've ever seen before.

Support for the Ann Arbor Summer Festival's education program is provided by the Milley Foundation.

TICKETS: WWW.ANNARBORSUMMERFESTIVAL.ORG @ 734.764.2538



Ann Arbor I.A.T.S.E. Local 395 Theatrical Employees

Proud to be part of the Ann Arbor Arts
Community for over 90 years.

734.845.0550



where excellence comes to
enchant



Over 500 performances each year - most are free!

Information Hotline 734-764-0583

League Box Office 734-764-2538

www.music.umich.edu



University of Michigan School of
Music, Theatre & Dance

TOP of the PARK Activities

rock &
recycle

presented by



reduce, reuse & recycle
ALL SEASON

We've made reducing our waste and hosting a more sustainable festival one of our goals for this year's celebration. To help, we're teaming up with our friends at Whole Foods Market for an extensive recycling program at Top of the Park. Look for colorful recycling bins throughout the festival grounds. We thank you in advance for your commitment to reduce, reuse, and recycle while visiting the festival.

retreat 

mind-body sessions
SATURDAYS & SUNDAYS @ 5PM

sponsored by



A series of mind-body sessions at Top of the Park, this alternative happy hour lets you enjoy a relaxing late-afternoon weekend workout with classes in yoga, Tai Chi, Pilates, and dance fitness. Led by experienced practitioners, all sessions are free, and take place at 5:00 pm on the east lawn of the Rackham Graduate School.

- June 18 Yoga with Ann Arbor School of Yoga
- June 19 Tai Chi with Peaceful Dragon School
- June 25 Dance Fitness with BollyFit*
- June 26 Gyrokinesis with The Movement Center
- July 02 Capoeira with CDO Michigan
- July 03 Middle Eastern Dance with Unveiled Dance
- July 09 Yoga with A2 Yoga
- July 10 Pilates with The Movement Center

* Held on the front lawn of Power Center.

TICKETS: WWW.ANNARBORSUMMERFESTIVAL.ORG 734.764.2530



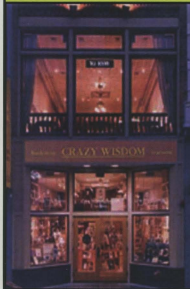
Whole Foods Market

is proud to sponsor the

Ann Arbor Summer Festival

990 W. Eisenhower Pkwy. - 3135 Washtenaw Ave.

bookstore **CRAZY WISDOM** tearoom



Serving and Celebrating
the Community for 29 years

Independent. Progressive.
Locally owned. Experienced staff.
Thriving.

Gifts, Cards, Jewelry, Crafts, Art,
Music, Incense, Ritual Items, Candles,
Aromatherapy, Body Tools & Yoga
Supplies and more!

Live Music in the Tea Room

114 S. Main Street, Ann Arbor
734.665.2757 - crazywisdom.net

Coming this Summer...
shopcrazywisdom.com

FESTIVAL

Special Programs



JUNE 19, JUNE 26 & JULY 3

Coordinated by University Organist Marilyn Mason, the International Organ Series includes three distinct classical performances featuring world-renowned musicians. All concerts are presented in the Blanche Anderson Moore Hall in the E.V. Moore Building on North Campus.

June 19, June 26 & July 3 | 4:00 pm
Tickets are \$10 per event and available at the door.

PLAY SPACE

a photo exhibit by MYRA KLARMAN

POWER CENTER LOBBY
JUNE 18-JULY 8



INTERNATIONAL ORGAN SERIES

Sunday, June 19, 4:00 pm
Brenda Wimberly, Soprano
Marilyn Mason, University Organist

Sunday, June 26, 4:00 pm
Tapani Yrjola, Finnish Concert Violinist
David Troiano, Organist

Sunday, July 3, 4:00 pm
James Kibbie, Organist
Music of Bach



Coordinated by University Organist Marilyn Mason, the festival's Organ Series includes three distinct classical performances featuring world-renowned musicians. All concerts are presented in the Blanche Anderson Moore Hall in the E.V. Moore Building on North Campus.
\$10 Tickets can be purchased at the door.

FESTIVAL Special Programs.



literary arts series ALL SEASON

sponsors



Ann Arbor State Bank

Fresh Ink is a collection of Ann Arbor Summer Festival events celebrating the written and spoken word, presented in partnership with Ann Arbor Book Festival, Ann Arbor District Library, The Neutral Zone, Michigan Radio, UMMA, WCBN and other literary-minded partners.

AAFL's Summer Reading Program Launch

Presented in partnership with Ann Arbor District Library
June 19, Top of the Park, 5:00-8:00 pm
Admission Free

The Moth Mainstage

Co-presented with Michigan Radio
June 23, Power Center, 8:00 pm
Tickets: \$40, \$35, \$30, \$25

AABF's Book Fair

Presented by Ann Arbor Book Festival
Saturday, June 25, Fountain Plaza, Ingalls Mall, 2:00-5:00 pm
Admission Free

WordPlay Weekend

Presented in partnership with a variety of community partners
June 25-27, KidZone Tent, Top of the Park, 5:00-8:00 pm
Literary arts activities for children, including readings, sidewalk chalk poetry and more activities for young readers and writers.
Admission Free

33 1/3 Reading & Listening Party

Mondays Nights at Arbor Brewing Company, Tap Room
June 20, June 27 and July 4, 7:00-9:00 pm
Presented in partnership with Arbor Brewing Company & WCBN
Admission Free, Cash Bar

Louder Than a Bomb, Documentary Screening

Friday, June 24, 7:30 pm, UMMA's Helmut Stern Auditorium
Presented in partnership with Ann Arbor Book Festival & UMMA
Admission Free

VOLUME Summer Institute Instructor's Reading

Thursday, June 30, 7:30 pm, UMMA's Helmut Stern Auditorium
Presented in partnership with Ann Arbor Book Festival & UMMA
Admission Free

TICKETS: WWW.ANNARBORSUMMERFESTIVAL.ORG W 734.764.2538



wendy martin
PHOTOGRAPHY



WENDY MARTIN PHOTOGRAPHY

On location, natural light photographer
specializing in high school seniors and
wedding photography.

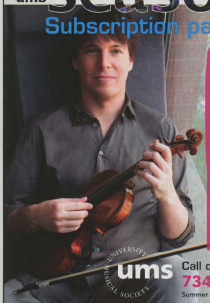
www.WendyMartinPhotography.com

248.321.1864

133rd
ums

season 11/12

Subscription packages on sale now!



Bringing the world's best music, dance,
and theater to Ann Arbor including:

John Malkovich &
Musica Angelica Baroque Orchestra
Gate Theatre of Dublin
London Philharmonic

Philip Glass & Robert Wilson's
Einstein on the Beach

Zakir Hussain and the
Master Musicians of India

Joshua Bell with
Academy of St. Martin in the Fields

....and many more!

Visit www.ums.org for complete details.

Call or click for tickets!

734.764.2538 | www.ums.org

Summer Hours: M-F 10 am-5 pm, closed Saturday & Sunday.

FESTIVAL Special Programs

33¹/₃
A Reading & Listening Party

reading & listening party
MONDAYS @ 7PM

Join us for a reading-and-spinning session featuring local writers, journalists and music aficionados sharing excerpts from Continuum Books' 33 1/3 series of books about classic rock albums, followed by a guest dj mixing from the songbook of that evening's celebrated artist.

June 20 Guest Reader: Bob Needham, Entertainment Director, AnnArbor.com
The Pogues' "Rum, Sodomy & The Lash" by Jeffery T. Roesgen
WCBN DJ: Sue Dize
Arbor Brewing Company, 7:00-9:00 pm

June 27 Guest Reader: Jeff Meyers, Managing Editor, Concentrate Media
Tom Waits' "Swordfishtrombones" by David Smay
WCBN DJ: Saramin
Arbor Brewing Company, 7:00-9:00 pm

July 04 Guest Reader: Emlyn Chand, Writer and Book Publicist
Bruce Springsteen's "Born in the U.S.A." by Geoffrey Himes
WCBN DJ: Aaron Smith
Arbor Brewing Company, 7:00-9:00 pm

33 1/3 (Thirty-Three and a Third) is a series of short books about a wide variety of albums, by artists ranging from James Brown to the Beastie Boys. Launched in September 2003, the series now contains over 70 titles and is acclaimed and loved by fans, musicians and scholars alike. The series title refers to the speed (33 1/3 revolutions per minute) of an LP album.

Part of the Ann Arbor Summer Festival's Fresh Ink Literary Arts Series and presented with permission from Continuum Books.

presented in partnership with



and

WCBN

ARBOR BREWING COMPANY PRESENTS

beer
that
rocks

ON TAP ALL SUMMER AT ABC

festival
saison



proceeds benefit ann arbor summer festival

114 east washington street | downtown ann arbor | arborbrewing.com | (734) 213-1393

Introducing Festival Saison, a Belgian-style summer ale brewed with lemon zest, orange peel, and a hint of ginger.



Available exclusively at Arbor Brewing Company, with \$1.00 per pint donated back to support Top of the Park.

88.3^{FM}

WCBN FM
ANN ARBOR

Student Radio from the
University of Michigan

WCBN.ORG

SUPPORT

SUPPORT YOUR FESTIVAL

HELP US GROW AND THRIVE!

This is a festival for, and about, people. It is a time to enjoy our city and to explore the cultures of those who make up our community. Through a range of programming experiences, we aim to make the festival accessible to as broad a range of people as possible. Our annual event gives us an opportunity to celebrate not only the arts, but also to celebrate one another.

The Ann Arbor Summer Festival gratefully acknowledges the generosity of the many individuals, businesses, and partner organizations that support our mission. With your contributions, we simply can continue to offer memorable festival experiences and enhance the quality of life in our community.

Give 3
keep TOP free

SUGGESTED DONATIONS

Admission to Top of the Park is free, although a suggested donation per visit of \$3 per individual or \$5 per family is asked to help defray costs of the event. We are urging you, our patrons, to be as generous as you can and support this Ann Arbor tradition.

Top of the Park is produced by the Ann Arbor Summer Festival, an independent non-profit organization that relies on contributions and support from the University of Michigan, the City of Ann Arbor, local businesses, individual donors, and you, our patrons. Each year it costs nearly \$300,000 to produce Top of the Park activities, so donations of any amount are appreciated.

By donating as little as \$3 per visit, we can continue to offer nearly a month's worth of quality musical performances, film screenings, and outdoor special attractions to the public without charging admissions. Your active participation helps us keep Top of the Park accessible to everyone.

We thank you for your nightly support and look forward to seeing you, your friends, family and neighbors at Top of the Park.

For more information on the festival, to read our case for support, or to learn about the organization's strategic plan, please visit our website at annarborsummerfestival.org.



Ms GREEN CONSTRUCTION

Ann Arbor, Michigan | 1-877-466-7473 | Licensed & Insured



The Green & Energy Saving Experts



Call Today

1. Cellulose Attic Insulation
2. Fiber Cement Siding
3. High Efficiency Replacement Windows
4. Retro Fit Foam Wall & Rim Joist Insulation

FREE ESTIMATES

Call Today or Visit Online 1-877-466-7473
www.msgreenconstruction.com

Ask How We Can Save You Money with a Certified Energy Audit!



\$1000



\$1000

Save \$1000 on a Whole House Makeover or 10% Off on any Single Improvement!

ONE THOUSAND DOLLARS

SPONSORS

SERIES SPONSORS



**BENARD L. MAAS
FOUNDATION**



TOYOTA

LEAD SPONSORS



AVENUE INSURANCE



FIFTH THIRD BANK



First Martin



**MILLER
CANFIELD**



PHIRE



PIZZERIA



Ulta



**WHOLE
FOODS**

PRESENTING SPONSORS



Ann Arbor State Bank



COLUMBIA BANK



DENNIS & ELLIE SERRAS



Edward Jones



Heineken



Highland Heights



JJR



Lake Erie



M

SUPPORTING SPONSORS

Allergy & Immunology Associates of Ann Arbor • Arch Realty • Columbia Asset Management • ECO PHYSICS, INC. • Compendia Bioscience • Enlighten • Enquire Dental • Harris Valley Chapter of Credit Unions • Kwanza Club of Ann Arbor • Jean and Ken Libo • Michigan Oral Surgeons • Planet Rock • ProFusion • Thank Local First & Members: Arcadia Antiques, Collected Works, and Getches's House • Charles Reuther Co. • University of Michigan Credit Union • Rapids Insurance Group

FOUNDING PARTNERS



MEDIA PARTNERS



GOVERNMENT FOUNDATION, AND CORPORATE GRANTS

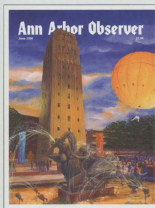
Ann Arbor Area Community Foundation • Ann Arbor Downtown Development Authority • ART Foundation Matching Gifts Program • Bee & Jony's • Bernard L. Maas Foundation • Bill and Molly Dobson Fund • Bessie and James Rose Charitable Fund • Booth Printing & Heating Co. • City of Ann Arbor • Chislett's Foundation • Columbia Asset Management • Gelman Educational Foundation • Google Matching Gifts • Howard J. Cooper Fund • Johnson Controls Foundation • JP Morgan Chase Matching Gift Program • Kwanza Club of Ann Arbor • Martin Family Foundation • Molly Foundation • THE MOSCOW FOUNDATION of R. & P. Heydon • National Endowment for the Arts • Nina Tuxa Foundation • Pitzer Foundation Matching Gift Program • The Seattle Foundation • SPL Foundation • The Wally and Jo Stroh Foundation • Target • Thompson Proffers Foundation Matching Gift Program • URS Employee Giving Program • University of Michigan • Wobart Ann Arbor Fund of Rosalie Woods



Ann Arbor's fine wine legacy continues with unique, high value imported wines available at your favorite retailers & restaurants across town and the state



www.uswineimports.com



Local.
Trusted.
Essential.

Please support quality local journalism. Become an Observer Friend. Pay \$20 for a voluntary paid annual subscription. "Like" the Ann Arbor Observer on Facebook. Thank you.

Ann Arbor Observer
thirty • five years 1976 • 2011

201 Catherine | Ann Arbor | MI | 48104 | 734.769.3175 | arborweb.com

DONORS

Thank you to everyone whose generosity makes the Ann Arbor Summer Festival a reality. These lists reflect donations received during the 2010 donor/calendar year. End of year and other gifts postmarked in 2011 will be acknowledged in the 2012 program. We apologize for any omissions or misspellings. Please let us know so we may correct any errors.

festival 5000

Carol Amstar
Becky and Erik Bakker
Lois and David Bara
Elissa and Richard Benedek
Stephanie King-Benz and Bruce Benz
Seth Bender
Tracey and Mark Burnstein
Mary and Ed Cady
Sue and Bill Chandler
Jennifer and Larry Coates
Cindy and Jeff Colton
Anne and Howard Cooper
Beth and Alan Cotze
Martha Darling and Gilbert Omann
Ann and Hal Davis
Nan and Joe Decker
Jeanine Delay and John Lawrence
Leslie Desmond and Philip Staffgren
Cynthia and Andrzej Dlugosz
Dallas Dutt
Darla and Michael Dubin
Karen and Samuel Edwards

John and Jackie Farah
Peter Fayolan
Dawn and Roland Foerg
Linda and Larry Fresh
Julie and Thomas Fritz
Patricia Garcia and Dennis Dahlmann
Rita and Charles Gelman
Sharon and Lazar Greenfield
Bonnie and Larry Hagerly
Sheila and Steven Hamp
Larry Hauptman
Catherine and Jeff Hauptman
Rita and Peter Heydon
Debra and Max Hutton
Elizabeth and Rick Jarembowski
Patricia King
Connie and Tom Kinneer
Tamara L. Kutter
Wendy and Ted Lawrence
Kathy and Leo Legatski
Carolyn Leland
Elizabeth Mall

Betsy Yvonne Mark
Pat McCune and Ed Stein
Margaret McKinley
Tracy and Y. Jamie Mistry
Jiyon and Tony Nam
Susan and Mark Oringer
Linda and Bill Powers
Sonnie and Jim Reese
Jeffrey Reece
Ellie and Dennis Serras
Annette and Peter Schork
Ann and Thomas Schirber
Kimberly Scott and Dai Meth
Nancy and James Stanley
Janeth and Nub Turner
Laurie and Tim Wadhams
Toni and Donald Walker
Ambassador Ronald and Mrs. Eileen Weiser

The Festival 5000 was created in 2008 as part of the Ann Arbor Summer Festival's 25th season celebration. Members pledge a minimum donation of \$5,000 over a 5-year period.

power circle life members (\$100,000+ CUMULATIVE INDIVIDUAL DONATIONS)

Connie and Tom Kinneer

power circle plus (\$1,500+)

Becky and Erik Bakker
Lois and Richard Benedek
Nancy Brennan and Bradley Cross
Mary and Ed Cady
Anne and Howard Cooper
Julie and Thomas Fritz
Rita and Charles Gelman
Connie and Tom Kinneer
Jean and James Libs

THE MDSAC FOUNDATION (of R. & P. Heydon)
Tracy and Y. Jamie Mistry
Dana Muir
Benno and James Reese
Gwynn and Jim Starke
Vibrant Ann Arbor Fund of Rosalie Edwards
Laurie and Tim Wadhams

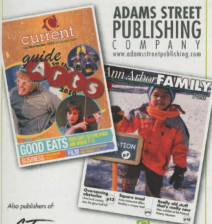
power circle (\$1,000-\$1,499)

The Regina and Merton Allen Memorial Fund
Carol Amstar
Irene Ball
Christie and Tom Barrett
Lois and David Bara

Stephanie King-Benz and Bruce Benz
Tracey and Mark Burnstein
Susan and Bill Chandler
Jennifer and Larry Coates
Beth and Alan Cotzin

Martha Darling and Gilbert S. Omann
Ann and Hal Davis
Nan and Joe Decker
Jeanine A. Delay and John K. Lawrence
Cynthia and Andrzej Dlugosz

Advertise with us, **GET RESULTS.**



Also publishers of



3000 Westmore Ave., Suite 3
Ann Arbor, MI 48104
734.668.4044

1120 Adams St
Toledo, OH 43604
419.244.9039



IBEW Local 252 union electricians and your regional NECA electrical contractors are building a brighter Michigan.



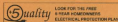
Union Contractors and Electricians Alliance trust experienced professionals for all of your projects:

- residential
- commercial
- voice/data/video
- industrial

(734) 424-0978

Please visit our web site for a complete list of contractors:

www.ibewmca252.org



CELEBRATING FIVE YEARS
of growing up in Ann Arbor.

Kiplinger's 10 Great Cities for Raising Families 2010 #2
Innovation Cities™ Americas 2010 Index #12
Forbes Best Places for Business and Careers 2010 #83

www.compendiabio.com

power circle (\$1,000-\$1,499)

Alice Dobson
Dallas Dorr
Daria and Michael Dubin
Karen and Samuel Edwards
Jackie and John Farah
Peter Fogarty
Linda and Larry French
Dawn and Roland Foerg
Patricia Garcia and Dennis Dahlmann
Zita and Wayne Gillis
Sharon and Lazar Greenfield
Bonnie and Larry Hagerty
Sheila and Steven Hamp
Catherine and Jeff Hauptman
Larry Hauptman

executive producer (\$500-\$999)

Susan and Larry Adler
Judy and Alec Allen
South Plumbing & Heating Co
Albert C. Callati
Salli Christenson and Mike Goild
Melinda and Wayne Colquitt
Lynn D'Orio and Theresa Gratsch
Vic and Charles Ellis
Guillermo Flores
Laura Ford
Karen and Al Gallup
Laura and Jim Kosteva
Fran and Irwin Morstein

director (\$250-\$499)

Julie and Adam Agronoff
Muri Arno and Dave Huntton
Debra and Don Bailey
Kathleen Baines and Ed Domino
Emily Bandera, MD
Sylvia Bargo and Newton Siever
Deb and Dave Barnes
Lindsay and Frank Bateman
Leo A. Bechard
Marty Betts
Jonathan Blakely
Faye Bradbury
Michelle and Andrew Caird
Annie Chase
Pat and Paul Cousins
Cindy and Tom Crawford
Judi and Ed Davidson
Jean Decker Connell and Phelps Connell
Amy and Alan Demsky
Margaret Engle and Gavin Clabough
Maureen Foley and John Blansky
Stephanie and Tim Fresh
Jean French and Ray Fullerton
Elizabeth and William Frize
Judy and Richard Fry
Beth German and Martin Garber
Karla Goldman
Mona and Edward Goldman
Barb and Mitch Goodkin
Susan and D. Goodrich

Merrill Howard and Seth Bowder
Elizabeth and Rick Jarzembowski
Patricia King
Tamara L. Kuttar
Wendy and Ted Lawrence
Karly and Les Legatski
Betsy Wynne Mark
Margaret McKinley
Ann R. Meredith
Fai Fei and John Weidner
Jennifer and Frank Moore
Jiyon and Tony Nam
Dr. Kristin and Paul Nickodemus
Susan and Mark Orringer
Linda and Bill Powers

Patricia Pooley
Barbara and Wallace Prince
Margaret J. Resler
Elaine and Bob Sims
Ines and Eric Storzek
The Wally and Jo Strobel Foundation
Dr. Henry H. Swain
Yvonne and Richard Van House
Jerry and Jack Weldenbach
W. Scott Westernman, Jr.
Karen Yamada and Gary Dolco

Sally and Larry Grace
Martha and Larry Gray
Susan and Dr. John Hatch
D Craig Heusman
Margerie and Gregory Henry
Timothy Hofer
Barbara and Robert Hooberman
Chris and Dave Horn
Martha and Ed Kimball
The Hlinick Family
Mary and Ed Krassy
Kathleen Koza and Roger Pethus
Jill Latta and David Bach
Judie and Jerry Lee
Anja Lehmann and Tim Dickinson
Betty and Dr. Len Lofstrom
Sandi Lopez
Stephanie and Richard Lund
Pearson and Robert Macke
Sudha Maheshwari and Gavin Shatkin
The Marcovitz Family
Mr. and Mrs. Thomas McMullen
Madelyn and Dan McMurtrie
Olga Mair
Gayle and Bruce Meyer
Susan and Terry Murphy
Barbara Neivins-Sweng and H. Kar Song
Karen and Joe O'Neal
Jeanne and John Phibbs
Susan Prillay and Bruce Vitkins

...CONTINUED

Annette and Peter Schork
Ann and Tom Schriber
Kimberly Scott and Omi Werth
Ellie and Dennis Senas
Ingrid and Cliff Sheldon
Nancy and James Stanley
Janeth and Nub Turner
Laurie and Tim Wadhams
March Walker
Tom and Donald Walker
Ambassador Ronald and Mrs. Eileen Weiser
Dianne Wadzinski and Jim Skupski
Linda Woodworth and Paul Morel
Amy and Robb Wurfle

The Ann Arbor State Bank
supports the arts, and your
Ann Arbor State of Mind



Ann Arbor State Bank
The Personal Bank



a2sb.com
734.761.1475



316 S. State Street
@ North University
734-994-4004
www.redhawkann Arbor.com

Happy Hours

Mon - Fri
3:00 - 5:00
Thurs - Sat Nights
10:00 - 1:00

TICKETS: WWW.ANNARBORSUMMERFESTIVAL.ORG 734.764.2530



"Huh? What?"
"I can't hear you."

If you, a family member or friend
have difficulty hearing . . .

we can help.

Hearing loss is gradual, and a
hearing evaluation by our expert
Audiologists can help overcome
the problem.

Call (800) 851-6672
to schedule a hearing evaluation.

Improve your hearing. Improve your life.



MOSA Audiology

Reichert Health Center, Suite 2016
www.mosaaudiology.com



FREE 45-DAY TRIAL PERIOD - MONEY BACK GUARANTEE



Get it mailed to you
for a year; just send
a check for \$33 to
The Ann magazine
100 Tulip Tree Court
Ann Arbor, MI 48103.

principal (\$150-\$249)

Ruth Addis and Marj Schloff
Jan and Jim Albers
The Altzer/Hotela Family
Angeline & Associates, LLC
Monica and Dan Atkins
Back Alley Gourmet
Barbara and Daniel Balbach
Pat Barile
Susan and John Beckett
Libby and Bill Birdwell
Carmine Bloum and Charles Wilbur
Martha and David Bloom
Richard A. Bowerman
Kathryn Bowring and Paul Raig
Nancy Brennan
Raya and Marian Brown
Newen and Lee Carrigan
Dennis Carter
Beverly Chetnik
Nancy and John Clark
Kathi and Rick Cohen
Josephine Collins
Karen G. Crawford
Ellie Cruise and Kevin Hart
Robert Dennellan
Brendan Durrett
Cheryl and Bruce Elliott
Beatrice and William Fox
Shari and Ben Fox
Lucia and Doug Freeth
Marcia and Leon Friedman
Nancy Frushour and Gary Stelzer

Deborah and Henry Gerst
Maureen and David Ginsburg
Colette Grabo
Charlette Hanson
Jane and Dan Hayes
Pam and Bill Henry
Carol and Ken Hovey
Jill Johnson and Andrew Powers
Francine and Paul Jones
Mary K. Jacobyn
Dr and Mrs Michael Kaszakis
Sally and David Kennedy
Margaret and Todd Keohart
Jennifer and Jon Kinsey
Shira and Steven Klein
Candyn and Paul Lichter
Yingwei Liu
Mallatira Center for Plastic Surgery
Richard Martin
Scott Masten
Susan Rice and Thomas Maza
Michael McIntyre
Cynthia and Mike Messmore
Molly Metherell
Sharon and Chuck Newman
Fola Odetola
Perry G. Pericazzo
Dorothy and Donald Peterson
Wesleyeish and William Peterson
Mary Ann and Robert Pierce
Debbie and Jeff Pike
Lorna and Gerald Prescott

Deb and Joe Porcull
Sandra Reagan
Mary Beth and George Reasoner
Jeffrey Reace
Kimberly and William Rice
Sally and Bruce Richardson
Alyson Robbins and Robert Oliver
Elizabeth and Ricardo Rodriguez
Maya Savarin
Eric Schiffer
Patricia and Joseph Settimi
Colleen Sherman
James Simpson
Kathleen Singer
Julie and Jeffrey Smith
Laure and Gary Solen
Sandra Sorini Elser
Carlyn Spencer
Card and James Thry
Madeline and Steve Thry
Glenda Thomas
Christine Wagner
Jack Wallace
Deborah and Mike Weber
Mary Linda and Larry Webster
Lynn and John White
Ann and Clayton Wilhite
Jean Wong and Ralph McKee
Pam and Bill Wood
Lynne Wright

lead (\$100-\$149)

Judith Abrams
Sandy and Ray Aldrich
Susan and Michael Alexander
Katie and David Andrea
Harlene and Henry Appelman
Dr and Mrs Jarald G Bachman
Suzanne Balliet
Samantha and Daniel Banda
Barbara and Paul Gilson
Jan Berry and John Copley
Joan Binkow
Kathy Bonds and Mark Mau
Christine Brummer
Mary and Martin Buckingham
Deborah and Stephen Burling
Stephanie Buttry
Susanne and Paul Carman
Lana and Alfred Chang
Cheryl and Brian Clarkston
Judy and Kevin Compton
Joyce and William Connelt
Susan and Arnold Coran
Kathleen Crispell and Tom Porter
Constance Crump and Jay Simrod
Sharon and Michael Darga
Matthew M. Davis
Debra Mattison

Devis Defeo
Christina and Peter Deininger
Sally and David Dilks
Karen and Stuart Downing
Barbara and William Ebeling
Alicia and Jon Elliott
Jill and David Esau
Martina Harmon Enkel and Daniel Enkel
Penny and Ken Fischer
Sara and Michael Frank
Kris Freeark and Bob Zucker
Jerrald Frost
Jane Galinstowicz
Joyce and Steve Gerber
Sharon Gold-Steinberg and Michael J. Steinberg
Lelia A. Gwaland
Robert Green
Janice Gruchar and Ron Gibala
Susan and Barry Gross
Susan Gucynski and Gregory Mazurek
Glenda Haskell and Rick Reichman
Anne Heacock and Stephen Fitzner
Gloria Helfand and Harvey Michaels
Dobbe and Norman Herbert
Lee Hollander and Tammie Nabra
Carol Hollenshead and Bruce Wilson

Jeri Hollister and Tom Bray
Donald Hudcock
Robert Hunt Berry
Molly Hunter Dobson
Inser Balance Therapy
Samuel Johnson
Susan and Steve Julius
Barb and Lenay Kalka
Rosalie and Ron Koenig
Elaine and Mark Kopka
Robert Krasny
Martha and David Krebbiel
Leah Gillen
Nancy and Todd Lett
Robin and Rod Little
Susan Livingston
Rosi and Bernie Lugauer
Marlynn and Duncan Maagon
Frances and Charles Marchand
Judy and Roger Mough
Raven McCroy
Patrick Melzer
Kathy and Bert Moberg
Ann Mulhern and Raymond Maharo
Virginia Murphy and David Shimann
Barbara Murphy and Gavin Eadie
Nancy S. Pichus

LET'S JUST SAY WE LOOK BOTH WAYS BEFORE WE LOOK BOTH WAYS.

When it comes to money, specifically your money, we believe there is no substitute for a carefully considered, passionately disciplined investment approach. Discover what we can do for you—whether it's planning for retirement, a future education or passing along family assets. LIFE WELL PLANNED.

RAYMOND JAMES®

©2010 Raymond James & Associates, Inc., member New York Stock Exchange/SIPC
10-BDMKT-0426 RJ/A 10/10



STEVEN HAULENBECK
www.stevenhaulenbeek.com

Look for an installation of lighting canopies and lanterns by visual artist and designer Steven Haulenbeek throughout The Grove at Top of the Park.



highlandergraphics
.com

environmental design • displays • signs

Find us on Facebook.

lead (\$100-\$149)

Shirrah Nemmer and Jeffery Ogden
Dorothy and Frank Nesbitt
Amy Nesbitt and Robert Marshall
Kari and John Newman
Gretina and Michael Nolte
Arthur S. Nusbaum
Jane and Ed Outslay
Pair of Docs Consulting
Beth and Todd Pascoe
Deborah Paul-McDonald and Kevin
McDonald
Kathryn Peitz-Davis
Julie and Michael Pensa
Janet and Richard Petershaagen
Adela Finch and Webb Heane
Jennifer and Mark Pritz
Elaine Pomeroy and Joel Freeman
Diana Raimi and John Dryden
Anita and Daniel Rajkovich

chorus (\$50-\$99)

Patrice Aaron
Rebecca and William Aikman
Sally and Peter Allen
Robert Anderson Sr.
Ann Arbor Learning Community
Becky and Dennis Jozed
Mami and Ken Amgett
Susan Ayer
Emily Azari
Ruthanne and Milton Baker
Barbara Kay Barbara and David Kay
Teresa and Cory Berlicher
Mark Bartz
Linda and Maurice Binkow
Victoria C. Botek and William M. Edwards
Norma Brown
Mary Ellen and Robert Cain
Cynthia and Ron Calhoun
Carilyn and John Carr
Margaret and Dennis B. Carroll
Patricia and Paul Carson
Margaret Ann Carter
Casa Del Sol B&B
Mimi Chapman and Dietmar Wagner
Catherine Chew
Karen and Robert Collins
Joann and Townley Culbertson
Judith Dathava
Emily Darling
Ellie and Ed Davidson
Marie Deviny and Martin Pernick
Robin Duxis and Lerry Junck
Barb and Jeff Duncan
Carla and Thom Eggert
Rebecca Eisenberg and Judah Garber
Judge and Mrs. S.J. Elden
Judith Elkin
Margaret and Michael Entwist
Madeleine Faith

Linda and Roger Rayle
Mary Rooney
Judy and Charles Schlanderer
Barbara Sears
Mr and Mrs Seikeria
Janet and Michael Shatzsky
Catherine Anne Shaw and Evans Young
Carol and Rich Sheridan
Carol and Patrick Shery
Cullen Shevock and Marc Rubin
Revi and Max Steirn
Barbara K. Smith
Becky Spangler and Peyton Bland
Katherine Spindler
Tamara Springer and Steve Stancuff
Lisa and David Staiger
Ania Stefanopoulos and James Frusterberg
Christine Stier
Mira Susser

Anthony Finn
Susan Fisher and John Waidley
Jill and Charlie Flora
Betty Foote and Thomas Gebhardt
The Freshlight Family
Bernard Friedman
Cheryl Frueh
Joan Geddes Rose and Dr Robert C. Rose
Do Garcia and Bob Gillett
Linda and Roger Grekin
Ruth and Neil Haldeiman
Amy Harris and Malouin Sickels
Joanne Hernandez
Kay Holsinger and Douglas Wood
Robert Hopkins
Roshma Jaggi and John Peltaw
Jasit Chapin
Linda and Mark Johnson
Mary Ann and Tom Jones
Suzanne and Bruce Jones
Lisa and David Joseph
Sandy and Chris Jung
Todd and Alex Kales
Susan Karp and Dore Sagher
Jacqueline Kilbourn and Patrick Adams
Loch and Paul Kilroy
Marie Kosser and Andrew Merrill
Linda and Melynn Korobkin
Barbara Lamar and Terry Adams
Gerald Lapidus
Jeanine LaFrad and David Dickinson
Mr. John Leado Jr.
Linda G. Sprinkle
Jason Lindauer
Cesare Lorenzetti
Bruce Loughry
Carrie and Karl Majeski
Nina and Fred Mayer
Martha McCatchey

Suzanne Jander and Kenneth Boyer
Patricia and Tom Taylor
Randall Ten Haken
Denise Thal and David Soboy
Jonathan Thomas-Palmer
Nancy Thorson-Rogers and Michael A.
Rogers
Bob Treat
Lisa and Jeff Tulin-Silver
Esther Ullman
Teresa and George Voegeli
Enid Wasserman
Susan and Doug Weber
Lisa and James Weidenbach
Janet Weiss
Lisa and Ron Weston
Richard C. Wilson
Noel Ann and Christopher Winkler
Beth and LW Winsten

Carmen and Jack Miller
Susan and David Milne
Laurel Moore
Stephan Morsa
Denise and Eli Neiburger
Nancy Niemela and Orest Mykolenko
Billie Oelberg and Sandro Cinti
Lewis Okun
Kathy and Mike O'Rear
Charleto and Norm Otto
Jennifer and Rajiv Patel
Paula Christensen Photography and Video
Jan and Marand Part
John Poirier
The Pritts Family
Linda Osain
Beth and Lou Quillen
Patricia Raymond and Stephen Ernst
Barbara Rogers
Wendy and David Reinhardt
Annetto and John Reyes
Elizabeth A. Rose
Karyn and David Sager
Bonnie Schaffer
Rudolf Schmeel
Karyn and David Schoem
Trudi Schreiber
Amy Sorleo and Stuart Baggaley
Harriet Selin
Meg Song
Sherry Sherry Harmon and Les Rome
Jean and Thomas Shepe
Elizabeth A. Silver and William M. Crawford
Mary Stadel
Stefania and Steven Weiss
Ann and Phil Suratt
Janet and John Talbot
Susan and Jerry Tarpey
Bonnie Thompson

.CONTINUED



Don't let snoring ruin the quality of your life.

Poor sleeping caused by snoring can cause health risks, frustration and fatigue, loss of sexual attraction or the ability to perform, irritation, or poor productivity at work for you or your partner.

Michigan Snore Clinic

ANN ARBOR Reichert Health Center (734) 528-9022
CHELSEA 14650 Old U.S. Highway 12 (734) 385-5100
SALINE 420 W. Russell St. (734) 429-1520

www.michigansnoreclinic.com



a division of
Michigan Otolaryngology Surgery Associates

Because snoring and chronic nasal congestion may be symptoms of a health issue, consult a health care professional at the Michigan Snore Clinic for a thorough diagnosis and proven treatments.

Call us. And rest easier.



First
Martin
Corporation

Ann Arbor. A City of Innovation. A Center for the Arts. A World of Opportunity.

First Martin Corporation is a proud sponsor of the Ann Arbor Summer Festival. Enjoy the show.

Exceptional Properties, Extraordinary Service. www.firstmartin.com

chorus (\$50-\$99)

Janet and Randall Torio
Emily Twainio and Tom Stockton
Barbara Underwood and David Patrick
Colleen Vance and William Price
Cam Vezar

Sandra and Joe Walls
Sarah and Dr. Edward Walton
Lois Weisman
Mary Elies and Dave Witte
Jane and Brian Wilson

...CONTINUED

tribute gifts

IN MEMORY OF:

Jean Crane
Jill Crane
John S. Dobson
Alice Dobson
Julie K. Evans and Julia Kish
Patricia and Tom Taylor
Cari Gutfman
Elliott S. Gutfman

Aunt Mary Hendricks
Barb and Jeff Duncan
George Killoran
Laurence Shear
Marian and Nathan Krasny
Robert Keasny
Barbara Regnier
Hedy Morla-Benner and Bruce Benner
Lucy Washington
Daniel Washington

IN HONOR OF:

Bethy S. Elkins
Marie Devey and Martin Pernick
Bettye Elkins
Jason Lindauer
Julie Fritz
Barbara Nevin-Soing and H. Kaz Soong

legacy circle

The Legacy Circle honors those individuals who remember the Ann Arbor Summer Festival in their estate plan.

Bette and Alan Cotzin
Elliott S. Gutfman

Comeie and Tom Kinneer
Bonnie and Jim Reese

Nina Scheider

in-kind gifts (\$250+)

Ann Arbor Downtown
Development Authority
Blockbuster
Coca-Cola Bottling Co
Delux Tents & Events
Fantasee Lighting

Gratzi and Mainstreet Ventures
JKR Landscape Architecture, Planning &
Urban Design
Michigan Computer Supply, Inc.
O & W Inc.
Oasis Hel Tub Gardens

Quest Productions
The Produce Station
The Towner Group, PLC
Tom Thompson Flowers
Ultho
University Musical Society

in memorium

For festival friends we have lost and those we celebrate:

Herbert Amster
Jack Tyus Ball Sr.
John S. Dobson

Charles A. London
Jack Mall
Sang Y. Nam

Cheryl White

GRAHAM'S

restaurant



Extensive Small Plate Selections

Creative Entrées

Homemade Desserts



Located inside:



Kensington Court

ANN ARBOR

We Exceed. You Succeed.

610 Hilton Blvd. Ann Arbor 734-761-7800 www.kcourtaa.com

TICKETS: WWW.ANNARBORSUMMERFESTIVAL.ORG 673-764-2530



become a festival friend

We invite you to support your festival by donating to one of our many giving programs. Your financial contributions are essential in helping us maintain a vibrant, thriving organization that serves this community.

To learn more about individual and corporate giving, estate planning, endowment, donor recognition, partnership opportunities, or to read our five-year strategic plan, please visit our website at annarborsummerfestival.org.

VIP experience

Become a donor today and enjoy the Ann Arbor Summer Festival in VIP style with the best seats in the house, backstage meet and greets, private parties, and other great perks.

To learn how you can become a festival VIP and get access to benefits such as priority ticketing, complimentary parking, invitations to special events, and personalized donor concierge service, please call (734) 994-5999.

This season, the VIP Green Room at the Power Center, the Power Circle Major Donor Dinner, and the Volunteer Appreciation Party are all presented by our friends at Douglas J. Salon and the Douglas J. Aveda Institute, the exclusive sponsor of the VIP Experience at the 2011 Ann Arbor Summer Festival.

In addition, look for representatives from Douglas J. at the festival on select nights throughout the season, offering product sampling, VIP gift bags, and other premium giveaways to enhance your festival-going experience

presented by  Aveda Institute 


TICKETS: WWW.ANNARBORSUMMERFESTIVAL.ORG @ 734.764.2538



Let us relax you without stressing your wallet.

You'll LOVE our FREE Aroma Sensory Journey, Aveda Comforting Tea, Stress Relieving Neck and Shoulder Massage, Relaxing Hand Ritual and Makeup Finishing Touch, not to mention our no-tipping policy. Douglas J. - It's a great way to clear your head.

Reservations 734.222.5416 • 500 E Liberty • Ann Arbor, Michigan
douglasj.com

 Aveda Institute

SUMMER PROOF YOUR HAIR

Let us help protect your hair from summer damage.

Sun, salt and chlorine – all weaken hair so strands become dull, dry and discolored. Head off damage with Aveda Sun Care 16 Hour Defense & Recovery System. Keep hair healthy-looking all summer long. Practice safe sun - stop in today.

Reservations 734.929.0453 • 333 W. Grand St. • Ann Arbor, Michigan
douglasj.com

All services performed by trained stylists under the direct supervision of licensed instructors.

BOARD

Board of Trustees

James A. Kosteva, Chair
 Erik W. Bakker, Vice Chair
 Kevin S. McDonald, Secretary
 Michael S. Dubin, Treasurer
 Patricia M. Garcia, Past Chair

LeAnn Auer
 Christie Wong Barrett
 H. David Baru
 Lisa Bee
 Susan Chandler
 Sally Churchill
 Paul Cousins
 Tom Crawford
 Peter F. Faygian
 Dawn H. Foerg
 Stephanie Blackburn Freeth
 Julie Fritz
 Susan J.D. Gutt
 Beth Halloran
 John Heffley
 Mary Kerr
 Jon Kinsey
 Jenicki Lax
 Kenneth Magee
 Susha Maheshwari
 Margaret B. McKinley
 George D. Miller
 Anthony Y. Nam
 Kimberly L. Scott
 Ellie Serras
 Rich Sheridan
 Donald Washington

Trustees Emeriti

Paul C. Boylan
 George D. Goodman
 Margaret Massialas
 J.P. Weidenbach

Festival Society

(Former Trustees)

Pasala Allen-Meares
 Anneli Aronson
 Lisa Baker
 Milll Baranowski*
 Karl G. Bartsch
 Frank Beaver
 Louis D. Belcher
 Rodney T. Benson
 Joel S. Berger
 Karen Berger
 William Bess
 Lisa I. Bergsdorf
 Paul C. Boylan
 Elizabeth S. Braler
 John Neville-Andrews
 Mario Cetrabio
 Donald S. Chisholm
 John C. Clark

Elsa Kircher Cole
 Phil Cole
 Jeffrey J. Colton
 Howard J. Cooper
 Alan G. Cotter
 Ronald M. Cresswell
 John H. D'Arms*
 Jay Delay*
 Eunice M. Dobbs
 Stephen D. Dubson
 Duanna R. Durner
 John Eadie
 Karen Edwards
 Rosalie A. Edwards*
 Bethy S. Elkins
 Julie Ellison
 Walter Eysaflinck*
 Kenneth C. Fischer
 Jessica K. Fogel
 Beatrice Fox
 Robert Forman
 Erik Fredrickson
 Sadie B. Garner
 George D. Goodman
 Anne Hangman-Hawkins
 Charlotta M. Hansen
 Randy J. Harris
 Walter Harrison
 Harlan Hatcher*
 Matthew R. Howard
 James R. Irwin
 Einar Jensen
 Gerald Jennings*
 Christopher Kendall
 Richard L. Kennedy
 Constance M. Kinner
 John Knott
 Ira Koenigsberg
 William B. Krivom*
 John K. Lawrence
 Judith W. Malcolm
 Alan M. Mandel
 Jennifer Martin
 Margaret Massialas
 John M. Matlock
 Evan Maurer
 Jerry A. May
 Frederick W. Mayer
 Susan McClanahan
 Jayme Miller
 Y. James Mistry
 Thomas S. Moraghan
 Lester P. Monts
 Bruce S. Moyer
 Janet Muhlemann
 Patrick N. Napprell
 Shirley C. Neuman
 John Neville-Andrews
 Ellen Otten
 Karen Roykka O'Neal
 Mark C. Ouselet

Roberta R. Palmer
 Helen A. Peters
 Edward C. Pierce*
 Susan N. Polley
 Patricia Pooley
 Eugene S. Power, founder*
 John H. D'Arms*
 Doris Preston
 Agnes Reading
 Gail W. Rector*
 James S. Reese
 Barbara Reynolds
 Ellen H. Rowe
 Anne K. Rubin
 Ralph Santarpia
 Jeffrey A. Schoenher
 Peter F. Schok
 Ann Sweed Schriber
 Thomas J. Schriber
 Hazen J. Schumacher
 Ingrid B. Sheldon
 Angelina Smith
 Allan F. Smith*
 Louis Smith
 Jorge A. Solis
 Peter Spurling
 Joyce Spurnis
 Burrelle Staebler*
 Susan J. Stony
 Alfred A. Stuart
 Lisa A. Tedesco
 Estelle Tiley*
 Jane Von Wogllender
 J.P. Weidenbach
 Christopher Wendall
 Elise I. Weisbach
 Jerry A. Weisbach*
 Ruth T. Whitaker*
 Lynn E. White
 Timothy D. White
 David D. Wierman
 Frank C. Williams
 Karen L. Wolff
 Phyllis Wolff*

*Indicates deceased trustee

Festival Committees

Audience Development
 Susha Maheshwari, Co-Chair
 Kim Scott, Co-Chair
 Lisa Bee
 Sue Chandler
 Emily Darling
 Erica Fitzgerald
 Nevin Heslip
 Mary Kerr
 Jim Kosteva
 Sara Livingston
 Kevin McDonald
 Peter Schok

Development

Paul Cousins, Co-Chair
 Ellie Serras, Co-Chair
 Peter Faygian
 Patricia Garcia
 Stephanie Freeth
 Jim Kosteva
 Wendy Lawrence
 Margie McKinley
 Y. James Mistry
 Bruce Thomson
 Linda Thomson

Finance & Audit

Erik Bakker, Co-Chair
 Mike Dubin, Co-Chair
 LeAnn Auer
 Tom Crawford
 Dawn Foerg
 Patricia Garcia
 Connie Kinner
 Jon Kinsey
 Jim Kosteva
 Tony Nam
 Jim Reese
 Peter Schok

Governance & Nominations

Margie McKinley, Co-Chair
 Peter Faygian, Co-Chair
 David Bara
 Patricia Garcia
 Jim Kosteva
 Long Range Planning
 Christie Barrett, Co-Chair
 Jerry Lax, Co-Chair
 Julie Fritz
 Patricia Garcia
 Jim Kosteva
 Susha Maheshwari

Operations

Dawn Foerg, Co-Chair
 Julie Fritz, Co-Chair
 Dan Banda
 Paul Cousins
 Steve Gerber
 Sue Gutt
 Jim Kosteva
 Ken Magee
 Jim Reese
 Kim Scott



Proud to sponsor
 After Dark @ Top of the Park

BTL
 BetweenLines
 MICHAEL'S LIST NEWS SOURCE SINCE 1993

is a proud sponsor of the
 Ann Arbor Summer Festival

SEARCH BY TITLE, PUBLISHER, DATE, OFFICIAL A, TRANSPARENT AND PRICE

PRIDE SOURCE
 2011/2012 directory
 Available on PRIDE 2011
 ONLINE & ON PRINT

Check out our newly designed website at
PRIDESOURCE.com

PRIDE SOURCE
 MEDIA GROUP

Find us on Facebook

Reporting our stories since 1993

32nd Annual Detroit Jazz Festival • September 2-5, 2011
WE BRING YOU THE WORLD

Jeff "Tain" Watts 4, Sing the Truth! with ANGELIQUE KIDJO, DIANNE REEVES
 AND LIZZ WRIGHT, Dave Holland Octet, Joe Lovano Us Five, Regina Carter's
 Reverse Thread, Vinuicus Cantuária, Paquito D'Rivera Quintet, Kevin Eubanks,
 Sammy Figueroa & The Latin Jazz Explosion, Deacon Jones Blues Review, Ivan
 Lins Quinteto, Mandrill, Steve Wilson & Wilsonian's Grain and many more!

detroit
Jazz
 FESTIVAL

For more information and full artist lineup, visit detroitjazzfest.com

CHASE
 MACK AVENUE RECONSTRUCTION
 THE KRESGE FOUNDATION
 DONORBAR

Official host of the
 2011 Detroit Jazz Festival
 at F. BOSS 353 0811
 D&F Part No Code: JF&B&H

TICKETS: WWW.ANNARBORSUMMERFESTIVAL.ORG | 734.764.2538

Special THANKS

Alexander Marc
 Amy Harris, U-M Exhibit Museum
 Amy Reyes, Kensington Court
 Anne Grove
 Ann Strazbecher
 Ann Zaleski, U-M Facilities and Operations
 Barbara Silkworth, Miller Canfield
 Barry Luffus, Power Center
 Benjamin Perlick
 Bill Canning, U-M Recreational Sports Director
 Bill Van Cleave, Paragon Display Group
 Bud Neetham, AnnArbor.com
 Bob Yecke, U-M Michigan League
 Brian Ruddy
 Brian Weisman, Columbia Asset Mgmt
 Bruce Duncan, Comerica Bank
 Cal Aislove, Coca-Cola Enterprises
 Captain Charles Neffsinger, U-M Dept of Public Safety
 Chris Barnett, 107one
 Christie Barnett
 Christi Barnock
 Cindy Mahalak, Toyota
 Connie Kinneer
 Dan Hultsbarger, The Moveable Feast Catering
 Dana Budzaj
 Daniel C. Banda
 David Martel, AnnArbor.com
 Deborah Sulkowski, U-Litho
 Dean Neab, IATSE Local 395
 Dianne Widzinski and the House Staff
 Donald Harrison, Ann Arbor Film Festival
 Doug Edwards, University Professionals
 Dr. Harvey Lee, Ann Arbor Allergy
 Duane Lee, U-M Fire Inspector
 Eli Reiszburger, Tim Grimes, Ann Arbor District Library
 Eric Serrano and Sue Burke, Main Street Westside
 Elise Luddy
 Elen McCarthy
 Emily Darling
 Eric Bassay
 Erica Fitzgerald
 Evans Young, U-M USA and AA Book Festival
 Hank Baeier, U-M Office of the Executive VP
 Hans Maier, Bank of Ann Arbor
 Hermes Risien
 Hone M. Sullivan, U-M Facilities and Operations
 Ingrid Aul, Think Local First
 Ingrid Racine, The Neutral Zone
 Jack Bernard, U-M Office of the General Counsel
 Janice Lausch, U-M North Quad
 Jan Barber, City of Ann Arbor
 Jane and Bruce Oshaben
 Janet Weiss, Dean, Rackham Graduate School
 Jared Collins
 Jean and Jim Libs
 Jean Arnold and Frank Uhle, U-M Media Services

Jeff Crause, Edward Jones
 Jeff Bressi, UR
 Jeffrey Beyersdorf
 Jenny McKee, AnnArbor.com
 Jenny Graf, IMS
 Jillian Dewey
 Jim Adams, Quent Productions, LLC
 Jim Hume, Phire Branding
 Jim Kirk, UM Credit Union
 Jim Kostver, U-M Director of Community Relations
 Jim Libs, Mandus & Mandus
 Jim Lillie, Aerial Enterprises
 Jim and Bernice Reese
 Jim Wardy and Kit Morazan, O & W, Inc.
 Joe Daugherty, Didaktikos
 Joe Fazio, Miller Canfield
 Joe Johnson, RSG
 Joe Seo, Sesi Motors
 John Bismarck, 107one
 Jon Bullock, U.S. Wine Imports
 Juli Pineski
 Julie Cole, Ann Arbor Observer
 Justin Saylor, Aerial Enterprises
 Kathy Wood, Uler & Co
 Kenneth Blaznek
 Kevin Dorn
 Kevin Hsieh
 Kurt Keller, Phire Branding
 Laurel Twist
 Laurel Champion, AnnArbor.com
 Lauren Park, Phire Branding
 Leslie McCraw
 Linda Thomson
 Linda Yoh, WEMU
 Lisa Borgardt, UMMA
 Lucy Ann Lance
 Massage Usbers
 Mark Copeland, 107one
 Marni Rickelmann
 Mary-Alice Wiland, U-M Burton Tower Facilities
 Mary Ann Wiley, Whole Foods
 Marshall Wigmore
 Martin Baskley, 107one
 Mary Catherine Smith, WEMU
 Mary Kent, Ann Arbor Area CVB
 Mary Morgan, The Ann Arbor Chronicle
 Maya Friedman
 Matt and Rene Greff, and Arbor Brewing Company
 Matt Criguer, Phire Branding
 Matt Engelbert
 Matt Wilson, Highlander Graphics
 Matthew Altuda
 Maura Thompson, MSAA
 Maureen Farley McMahon
 Maureen Riley, Ann Arbor Street Art Fair
 Michael Bou-Maron
 Michael Michelen
 Mike Martin, First Martin
 Mike Roachek, Phire Branding
 Mely Motherwort, WEMU

Myra Klarman, Myra Klarman Photography
 Neal Bressler, UR
 Naz Sesi, Sesi Motors
 Nicole Rosenholtz
 Nina Barlow
 Patti Judson, Bank of Ann Arbor
 Paula Wilson, Ann Arbor Allergy
 Paul Lavinakis, Grato
 Peter Goodman
 Peter Schuck, Ann Arbor State Bank
 Phire Branding Company
 Rachel Giddings, Professure
 Rachel Jackson, Phire Branding
 Rebecca Goser and Darlene Jones, U-M Parking Services
 Rich Krieman
 Richi Narayan, Underground Printing
 Robert Marshall, Rianket Construction
 Ruth Schecker and Bill Zirinsky
 Ruth Spazin, UMMA
 Ryan Shea
 Said Keltzman, Phire Branding
 Sam Hess
 Sam Moran
 Samuel Livingston
 Sara Birrell, IMS
 Sgt. Michelle Chatrel, U-M Dept of Public Safety
 Sgt. Lee Satou, Ann Arbor Police Department
 Shannon Brown, ForeSee Results
 Shannon Rice, University Productions
 Short Footballer, Campus Inn
 Sheri Kroska, IP/Phargan Chase
 Shobana Geva
 Stacy Smith, Paragon Display Group
 Stephen Chrynski, MI Radio
 Steve Gasberman, Enlighten
 Steve Erik
 Steve Gutman and the Gutman family
 Stephen Ball, University Carlinatorer
 Sudrta Maheshwari
 Sue Gott, U-M University Planner
 Susan Bellison, Whole Foods
 Susan Campos, U-M Rackham Graduate School
 Susan Guszynski
 Susan Poley and Joe Merchese, DDA
 Suzanne Davidson, IMS
 Tim Marshall, Bank of Ann Arbor
 Tom Reynolds, SSA
 Tom McCarms, ECO PHYSICS INC.
 Tony Dearing, AnnArbor.com
 Tony Godrick, Phire Branding
 Top of the Park Staff
 Top of the Park Volunteers
 Travis Lafferty-Queen
 Wendy Lawrence
 Wendy Martie

FESTIVAL TEAM

Administrative Staff
 Robb Woulfe, Executive Director
 Amy Nesbitt, General Manager
 Maureen Farley McMahon, Administrative Assistant
 Samuel Livingston, Programs Assistant
 Laurel Twist, Graphics Assistant
 Kenneth Blaznek, Graphics Assistant
Mainstage Staff
 Jeffrey Beyersdorf, Production Manager
 Jim Lillie, Head Audio Engineer
 Barry Luffus, Power Center House Technician
 Douglas Edwards, Production Consultant
 Susan Guszynski, Mainstage Artist Services
 Michael Bou-Maron, Mainstage Artist Services
 Ernest Caviani, Piano Tuner
Festival Ticket Office Staff
 Suzie Davidson, AASF Ticket Office Manager
 Jenny Graf, IMS Ticket Office Manager
 Sarah Wilber, Group Sales Coordinator
 Sara Sanders
 UMS Front of House Coordinator
 Adrienne Escamilla, Ticket Office Associate
Student Employees
 Hailey Clark
 Liz Crabtree
 Shannon Deary
 Brian Giebler
 Tim Hiesler

Jennifer Howard
 Brooke Lundin
Venue & Usihing Staff
 Dianne Widzinski, House Manager
 Juli Pineski, Usher Coordinator
 Jane and Bruce Oshaben, Usher Assistants
 Brian Ruddy, Usher Assistant

Top of the Park Staff
 Jeffrey Beyersdorf, Production Manager
 Michael Michelen, Rackham Stage Manager
 Justin Saylor, Audio Engineer
 Steve Gutman, Site Manager
 Peter Goodman, Assistant Site Manager
 Elise Luddy, Hospitality Coordinator
 Alexander Mann, Grove Stage Manager
 Jean Arnold and Frank Uhle
 Film and Media Services
 Jim Adams, Lighting Director
 Denise Dibbs, Financial Assistant
 Marshall Wyome, Financial Assistant
 Leslie McCraw, Volunteer Coordinator
 Marni Rickelmann, Volunteer Coordinator
 Christi Barnock, Development Intern
 Nicole Rosenholtz, Volunteer & Production Intern
 Ann Strazbecher, Social Media & Production Intern

Benjamin Perlick, Production Intern
 Dana Budzaj, Production Intern
 Hermes Risien, Production Intern
 Maya Friedman, Production Intern
 Consultants
 Nina Barlow, Bookkeeping Services
 DIDAKTICOS, Technology & IT Consultants
 JBR, Landscape Architecture, Planning & Urban Design
 Miller Canfield, Attorneys
 Willis & Juraszek PC, Auditors & Tax Advisors

CREDITS

Phire Branding
 University Branding
 Festival Photography
 Highlander Graphics
 Festival Signage & Display

Myra Klarman
 Festival Photography
 Wendy Martin
 VP Donor Photography

