

ANN ARBOR SUMMER FESTIVAL 2012

FESTIVAL GUIDE

laugh at it. dance at it. dream at it.



HAVE AT IT.

laugh at it. dance at it. dream at it.

JUNE 15 - JULY 8 | BUILD YOUR
myFESTIVAL EXPERIENCE @ A2SF.ORG

WELCOME



ME

season TWENTY-NINE



On behalf of the Board of Trustees, it is my pleasure to welcome you to the 29th Ann Arbor Summer Festival.

When my wife and I were looking for a place to settle in Metropolitan Detroit over 20 years ago we happened upon an outdoor concert at "Top of the Park." What I remember from that evening wasn't the wonderful music or the delicious food; it was the relaxing atmosphere, the diversity of the crowd and the enjoyment the patrons were getting from sharing in each other's company. We felt like we had been invited onto Ann Arbor's front porch.

Although the festival is supported by many generous volunteers, skilled seasonal staff members and an engaged board, this event is largely produced by three full-time staff: Executive Director, Robb Woulfe; General Manager, Amy Nesbitt; and Director of Development, Beth Johnson. They are primarily responsible for elevating the profile of the festival's international prominence.

The festival is a collaboration between the City of Ann Arbor and the University of Michigan. Their continued financial and in-kind support is critical to the festival. In addition, we are supported by many faithful individual and corporate donors, which have allowed the festival to grow in stature and remain as one of Ann Arbor's treasured annual events. Thank you so much for your support.

We have a wonderful program of events planned for you this year. We sincerely hope you enjoy the festival. I look forward to joining you for a beverage or two on our front porch.

Erik Bakker

Erik Bakker
Chair, Festival Board of Trustees

tickets: A2SF.ORG ☎ 734.764.2538

TABLE OF CONTENTS

03 PARTNERS AND SPONSORS	29 OUTDOOR CINEMA
07 MAINSTAGE	31 THE GROVE
19 TOP OF THE PARK	35 SPECIAL PROGRAMS
21 ATTRACTIONS	41 DONORS
25 ACTIVITIES	59 BOARD & STAFF



The Ann Arbor Summer Festival is a spectacular convergence of people, place, and performance. For 21 incredible summer nights, we transform Ann Arbor into a lively arts destination, a place where friends, family, neighbors, and visitors can connect and share in a celebration of artistic inspiration, creativity, and community spirit.

Each year about 60,000 people come through Top of the Park, the heart of our festival and a lively space where people can share in unique social and artistic experiences that speak across economic, cultural, and generational boundaries. It's one of the advantages of a festival like ours. It also gives us as programmers the unique opportunity to present events that inspire and entertain, as well as engage audiences in questions of place, interaction, and community.

With an array of ticketed and free events, regional premieres, and Ann Arbor exclusives, we invite you to join us from June 15 through July 8 to experience some of the best artists from around the world and from our own backyard. Over 100 events are presented in a program that embraces the best in music, dance, comedy, film, spoken word, circus and street arts, and family entertainment. From soul legends and songbook crooners to aerial acrobats and urban storytellers, our 29th season has something for everyone.

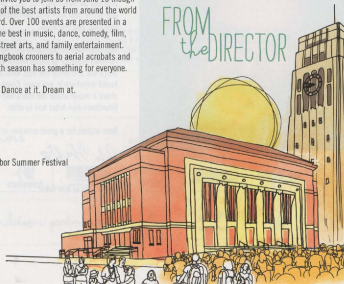
So have at it. Laugh at it. Dance at it. Dream at it.

Robb

Robb Woulfe
Executive Director, Ann Arbor Summer Festival



FROM
the DIRECTOR



TOWN & GOWN || founding PARTNERS



FROM
the UNIVERSITY

Singers, storytellers, songwriters and satirists populate the 2012 Ann Arbor Summer Festival in the forms of Al Green, Ira Glass, Bonnie Raitt and the Capitol Steps. They are among the performers of a festival that consistently delivers artistry, melodies and humor for audiences of all ages and interests.

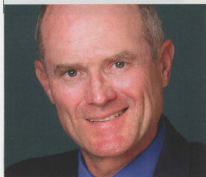
The University of Michigan is proud to host these engaging artists and more at the Power Center for the Performing Arts, Hill Auditorium and the Michigan Theater, as well as beautiful Ingalls Mall.

Thank you for joining us during our wonderful Ann Arbor summer tradition.

Sincerely,

Mary Sue Coleman

Mary Sue Coleman
President, University of Michigan



FROM
the CITY

The Ann Arbor Summer Festival is our town's favorite summer event! Don't miss the star quality performances that will be headlining the 2012 season. This year's lineup is one of the best ever with performances by Feist, Esperanza Spalding and P!nkobob.

The festivities at the Top of the Park draw friends and families together to dance in the street and relax in the park. Come out and enjoy the best local and regional bands to be found anywhere in any town. Come down to dance, converse, share a movie under the stars and experience all that Downtown Ann Arbor has to offer.

Best wishes for a great summer in Ann Arbor.

John Hietfe

John Hietfe
Mayor, City of Ann Arbor



SEASON SPONSORS

series sponsors

BENARD L. MAAS
FOUNDATION

HOWARD
COOPER
A. Maas Center, 2

ANN ARBOR.com

anna helps

O & W

TOYOTA

lead sponsors

First
Marshall
Bank

First
Marshall
Bank

MILLER
CANFIELD

AMERICAN
INSURANCE
GROUP

CHEVROLET

John
Deere

EVERETT
RENTALS

EDWARD
SUROVELL
REACTORS

U
Uthco

Life

PIRE
BRANDING CORP.

Rehmann

EVERETT
RENTALS

EDWARD
SUROVELL
REACTORS

U
Uthco

M

Light

WHOLE
FOODS

presenting sponsors

AMERICAN
INSURANCE
GROUP

CORNING

Edward
James

Electrol
The American Home

Uthco

Heineken

Uthco

meijer

MOLLOY
FOUNDATION

Uthco

UGP

WENDY & TED
LAWRENCE

supporting sponsors

Columbia Asset Management • Crazy Wisdom Bookstore and Tea Room • ECO PHYSICS, INC. • Enlighten • Empire Dental • Huron Valley Chapter of Credit Unions • IVF Michigan • Kapnick Insurance Group • Jean and Jim Libs • Michigan Commerce Bank • Michigan Oral Surgeons • ProAssurance • Charles Reinhart Co. • The Judson Center • University of Michigan Credit Union • The Guttman & Joan French Family

founding partners



media partners

BTL
BANK OF THE MIDWEST

current

MICHIGAN
STADIUM

ANN ARBOR.com

Ann Arbor Observer

www.annarbor.com

Uthco

WCBN

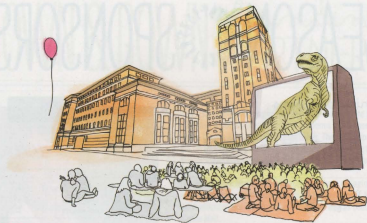
WEMU

agency & foundation partners

ANN ARBOR
COMMUNITY FOUNDATION

ARTWORKS

Uthco



MISSION

The Ann Arbor Summer Festival's mission is to present a world-class celebration of arts and entertainment that enriches the cultural, economic, and social vitality of the region.

CORE VALUES

Excellence • Diversity • Relevance

VISION

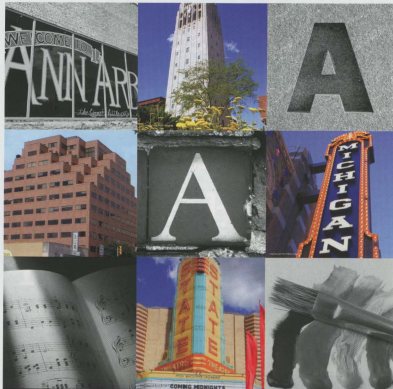
The Ann Arbor Summer Festival aspires to be a nationally recognized arts festival and enduring local treasure – a widely anticipated, interactive hub of creative and community energy.

A COMMUNITY TRADITION

The Ann Arbor Summer Festival is an exhilarating celebration of performing arts, outdoor entertainment, and community spirit. A boutique music and arts festival, the three-week gathering offers dozens of performances, activities, exhibitions, and screenings representative of the best in music, dance, comedy, film, circus and street arts, and family entertainment.

Established as an equal partnership between the City of Ann Arbor and the University of Michigan, the Ann Arbor Summer Festival presented its first full season in 1984. What began with a vision for a summer cultural event that would connect audiences with world-class artists, bring community together, and showcase the city and state as a major arts destination, now flourishes as one of the leading multi-arts festivals in the country.

Now entering our 29th season, the Ann Arbor Summer Festival produces two concurrent programs, one indoor and one outdoor, at various venues and spaces across the University of Michigan campus and in downtown Ann Arbor. The indoor Mainstage series includes ticketed performances of world-class music, dance, theater and comedy. The outdoor program, Top of the Park, is held along a beautiful campus green and offers admission-free concerts, movies under the stars, open-air spectacles and unique family attractions.



Proudly supporting the

ANN ARBOR SUMMER FESTIVAL

Your contribution to music and the arts enriches our culture and our community.

MILLER CANFIELD

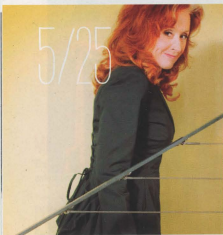
millercanfield.com

IT'S MORE THAN JUST THE LAW.

Celebrating 28 Years in Ann Arbor

MAINSTAGE | season TWENTY-NINE

5/25



BONNIE RAITT

WITH SPECIAL GUEST MARC COHN, THE SLIPSTREAM TOUR

BLUES | POP | ROCK

More than just a best-selling artist, respected guitarist, expressive singer, and accomplished songwriter, Bonnie Raitt has become an institution in American music. With a unique style that blends blues, R&B, rock, and pop, this nine-time Grammy Award winner returns to Ann Arbor in support of her newest album, Slipstream. Marc Cohn opens the show.

At the artist's request, fifty cents of each ticket sold for this concert will be donated to the ARIA Foundation.

FRIDAY, MAY 25 - HILL AUDITORIUM @ 8PM

\$65.50. \$60.50. \$55.50. \$45.50. \$35.50

sponsor



media ann arbor's 107.1 FM WEMU 89.1

6/5



FEIST

INDIE POP | FOLK ROCK

For nearly a decade, Leslie Feist did not stop moving. Her 2004 Juno-winning album Let It Die led right into 2007's The Reminder, which earned her four Grammy nominations, six Juno wins, the Shortlist Music Prize, and the opportunity to teach Muppets to count on Sesame Street. She then made her Saturday Night Live debut and has since toured the world. Feist appears in support of her newest album, Metals.

TUESDAY, JUNE 5 - POWER CENTER @ 8PM

\$50. \$45. \$40. \$30

sponsor

MILLER CANFIELD

media ann arbor's 107.1 FM

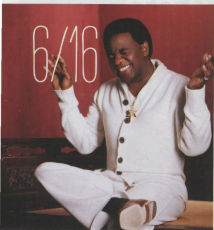
Non-local banks think the Ann Arbor Summer Festival has a Tilt-A-Whirl.

At Bank of Ann Arbor, we know Ann Arbor inside and out. That's why we're pleased to continue to support a local favorite, the Ann Arbor Summer Festival. 734-662-1600 or boaa.com. How can we help you?



Member FDIC

MAINSTAGE | season TWENTY-NINE



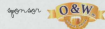
AL GREEN

POP | SOUL | GOSPEL

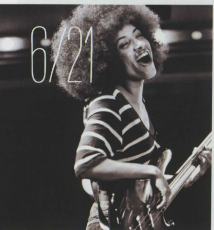
The Reverend Al Green is known the world over for his extraordinary voice, unmistakable sound, and legendary hits. Having sold over 40 million records, won 11 Grammy Awards, and been inducted into the Rock and Roll Hall of Fame, the minister of L-O-V-E is still captivating audiences with his unique blend of Memphis soul, gospel, blues, and early rock and roll.

SATURDAY, JUNE 16 - HILL AUDITORIUM @ 8PM

\$75. \$65. \$55. \$45. \$35



media WEMU 630



ESPERANZA SPALDING

RADIO MUSIC SOCIETY TOUR

JAZZ | FUNK | R&B

Bassist, vocalist, and composer Esperanza Spalding has quickly emerged as one of the brightest lights in the musical world. With a unique and style-spanning presence, Spalding became the first jazz musician to receive the Grammy Award for Best New Artist in 2011. Spalding tours in support of her newest album, Radio Music Society.

THURSDAY, JUNE 21 - POWER CENTER @ 8PM

\$50. \$45. \$40. \$30

media WEMU 630



Proudly sponsoring the
Ann Arbor Summer Festival for 29 years!



IT'S
Miller
TIME.

GREAT BEER.
GREAT RESPONSIBILITY.
©2012 MILLER BREWING CO., ANN ARBOR, MI

www.onwbeer.com

MAINSTAGE | season TWENTY-NINE



IRA GLASS

REINVENTING RADIO: AN EVENING WITH IRA GLASS

STORYTELLING | SPOKEN WORD

The creator of public radio's *This American Life* talks about his program and how the show is put together. As part of this, Glass mixes stories from the show, live onstage, combining his narration with pre-taped quotes and music, re-creating the sound of the show as the audience watches.

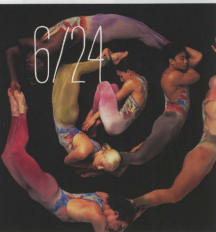
SATURDAY, JUNE 23 - POWER CENTER @ 8PM

\$55, \$50, \$15, \$55

co-presenter



Additional generous support provided by Wendy & Ted Lawrence



PILOBOLUS

PHYSICAL DANCE | AEROBATICS

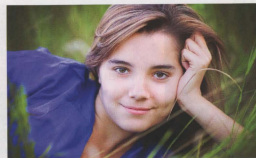
An American institution for nearly 40 years, Pilobolus returns to Ann Arbor with its dancers who leap, fly, intertwine, and break all of the rules. With styles ranging from playful to intense to gravity-defying, the company has been universally celebrated for its startling mix of humor, intelligence, physical invention, and raw athleticism.

SUNDAY, JUNE 24 - POWER CENTER @ 7PM

\$50, \$15, \$10, \$30, \$10 Kids

sponsor **BENARD L. MAAS FOUNDATION**

media **current**



MYRA KLARMAN photography

myraklarman.com / 734.330.1251 / 206 S Main St, #222

View **JUMP.IN**, a collection of Myra Klarman's Festival images on exhibit in the Power Center lobby, June 21-July 7.

MAINSTAGE | *season* TWENTY-NINE

6/27



NELLIE MCKAY

WITH SPECIAL GUEST SNEAKIN' OUT

JAZZ | CABARET | SONGBOOK

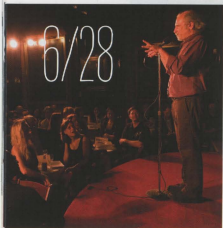
Nellie McKay's music is as tuneful and clever as the best of the Great American Songbook—part cabaret, part sparkly pop. From time-honored torch songs to Doris Day standards, the ivory-tinkling crooner offers an irresistible cocktail of vintage jazz classics, charming originals, and plenty of tongue-in-cheek humor. Sneakin' Out opens the show.

WEDNESDAY, JUNE 27 - POWER CENTER @ 8PM

\$25 general admission

media **WEMU**

6/28



THE MOTH MAINSTAGE

UNDER THE INFLUENCE: STORIES THAT SHAPE AND SHAKE US

STORYTELLING | SPOKEN WORD

The Moth, New York's hottest literary phenomenon, is an acclaimed nonprofit organization dedicated to the art of storytelling. After its sold-out performance at last year's festival, The Moth Mainstage returns to Ann Arbor with an all-star line-up of favorite tellers and local gems, each with a ten-minute story told live without notes.

THURSDAY, JUNE 28 - MICHIGAN THEATER @ 8PM

\$35 general admission

co-presenter **MICHIGAN RADIO**
13.7 The Moth Mainstage
www.mothmainstage.com

tickets **AZSF.ORG** or 734.764.2538

SMITH HAUGHEY AND OUR ATTORNEYS PROUDLY SUPPORT THE ANN ARBOR SUMMER FESTIVAL

Our Ann Arbor attorneys:

Cheryl Chandler	Veronike Liem
Gary Eller	William McCandless
Dale Hebert	Edward Stein
Karen Hockstad	Danielle Susser
Sharon Kelly	Tammie Tischler

SH SMITH HAUGHEY
RICE & ROEGGE
ATTORNEYS AT LAW
734-213-8000 www.shrr.com

134TH SEASON

SUBSCRIPTION
PACKAGES

ON
SALE
NOW

ums

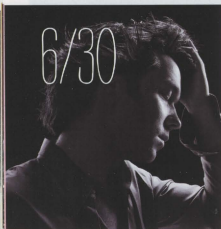
BE PRESENT

UMS.ORG 734.764.2538

WYNTON
MARSALIS



MAINSTAGE | *season* TWENTY-NINE



RUFUS WAINWRIGHT

POP | CABARET | ALT-FOLK

Affectionately referred to by Elton John as "the greatest songwriter on the planet" and praised by The New York Times for his "genuine originality," Rufus Wainwright's lush, theatrical pop offerings hark back to the traditions of Tin Pan Alley, cabaret, and even opera. Wainwright appears in support of his newest album, *Out of the Game*.

SATURDAY, JUNE 30 - POWER CENTER @ 8PM

\$50. \$15. \$10. \$30

agency PHIRE
BRANDING COMPANY

media ann arbor's 101.1

BTL
BUSINESS TRAVEL



THE CAPITOL STEPS

COMEDY | POLITICAL SATIRE

Answering the call for more civil discourse, these former Congressional staffers' brilliant song parodies and hilarious sketches lampoon up-to-the-minute issues, events, and personalities, poking fun at both sides of the aisle. Perfectly timed for an election year, America's foremost political satirists return to Ann Arbor for their annual Fourth of July performances.

WEDNESDAY, JULY 4 -
POWER CENTER @ 5PM & 8PM

\$50. \$15. \$10. \$30

agency HOWARD
COOPER
Import Center

media

MICHIGAN
RADIO
101.1

WEMU 69.1

The Perfect Quartet



• Audi • Honda • Porsche
• Volkswagen

Best Auto Dealership Service, the Ann Arbor News
-and- annarbor.com 2004 through 2011.

HOWARD COOPER

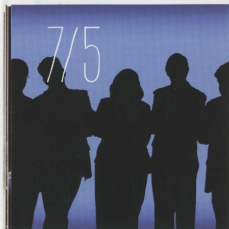
• Import Center •

(734) 761-3200

2575 S. State Street, Ann Arbor, MI 48104
www.howardcooper.com

MAINSTAGE | season TWENTY-NINE

7/5



CINEMATIC TITANIC

ORIGINAL CAST & CREATORS OF MYSTERY SCIENCE THEATER 3000

COMEDY | SATIRE | FILM

Laugh along with the non-stop riffing on some of the absolute cheesiest movies ever made as the original cast of Mystery Science Theater 3000 flanks the jumbo screen at the Michigan Theater for a live stage show. Enjoy the cast's hilarious riffing on two different films in an early and late show.

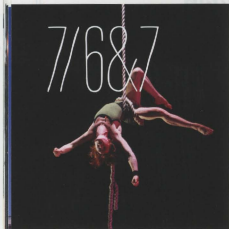
THURSDAY, JULY 5 -
MICHIGAN THEATER @ 6PM & 9PM

\$25 general admission

sponsor
HOWARD COOPER
Arland Center

media
MICHIGAN RADIO
93.7 FM and 107.1 FM

7/6 & 7



CIRCA

AUSTRALIAN CIRQUE NOUVEAU

CIRCUS | AEROBATICS | DANCE

Circa is movement at its most adventurous and dangerous. In a jaw-dropping fusion of acrobatics, aerial stunts, extreme tumbling, and contemporary dance, the company's signature style combines physical beauty, formidable talent, and a barrage of sound, light, and projection. The result is a new form of contemporary circus performance that is impossible to forget.

Recommended for Ages 10+

FRI, JULY 6 & SAT, JULY 7 - POWER CENTER @ 8PM

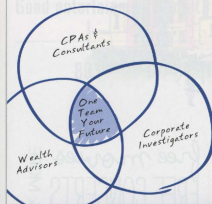
\$45, \$40, \$35, \$25, \$10 kids

friday sponsor **TOYOTA**

saturday sponsors
FIFTH THIRD BANK
Rehmann
Business wisdom delivered.

tickets: A2SF.ORG @ 734.764.2538

Are you looking for more?



We've got it. And we call it **The Rehmann Experience.**

Contact us to find out how we may be able to provide **MORE** for you.

555 Briarwood Circle
Ann Arbor
734.761.2005

rehmann.com

Rehmann
Business wisdom delivered.



PEOPLE BEING CURIOUS IS HOW THINGS GET DONE. IT'S THE SAME FOR BANKERS.

Anything that ever got accomplished began with people asking: "What if?" Challenging themselves. Challenging the system. At Fifth Third Bank, "What if?" is one of our favorite phrases. As a proud sponsor of Ann Arbor Summer Festival and Top of the Park, we support those who aren't afraid to reach, try and ask.

FIFTH THIRD BANK
The curious bank.

Member FDIC. © Fifth Third Bank 2012



TOP of the PARK

free movies
FREE CONCERTS & MORE

Free concerts, free movies, food and drink all available under the summer sky. The festival's Top of the Park is held in conjunction with the Mainstage performances, providing a forum for great local, regional and national artists in an extraordinary atmosphere. Every night creates a different mood and spirit, and is extremely family friendly. Top of the Park exemplifies everything Ann Arbor: diverse, friendly, kinetic, and unique.

Top of the Park activities are presented at Ingalls Mall, located directly in front of the Horace H. Rackham School of Graduate Studies on Washington Street near the Burton Memorial Tower. The festival opens at 6:30 pm on Tuesday through Thursday, and at 5:00 pm on Friday through Sunday. Top of the Park is closed on Monday nights. Admission to Top of the Park is free, although a suggested donation per visit of \$3 per individual or \$5 per family is encouraged.

FIRST FRIDAY

OPENING NIGHT CELEBRATION

FRIDAY, JUNE 15

The festival's opening night party, First Friday, is one of the most attended events of the season. The music kicks off in The Grove at 5:00 pm, followed by the old school rockability of Rio & The Rockability Revival, and concludes with the horn-driven retro funk band Third Coast Kings. After the sun goes down, the party continues with the festival's late-night DJ series, After Dark @ Top of the Park.

sponsored by STATE STREET

SO LONG SUNDAY

CLOSING NIGHT FESTIVITIES

SUNDAY, JULY 8

So Long Sunday is the festival's closing night celebration at Top of the Park. This year, the event features performances by Ariel & Zoey & Eli, Too at 4:30 pm, followed by the family-friendly Big Bang Boom, and concludes with George Bedard & the Kingpins playing their traditional closing night set. Following the bands, we're sure to have the time of our lives as we screen the '80s classic Dirty Dancing.

sponsored by CHEVROLET

call 800.425F.ORG or 734.764.2538

Good entertainment. Great radio. Always in season.

89.1

Proud to support the Ann Arbor Summer Festival.

npr + jazz + blues + local news wmtb.org



ENJOY THE SIGHTS
AND SOUNDS OF
COMMUNITY SPIRIT.

Chevrolet is proud to sponsor the 29th season of the Ann Arbor Summer Festival. We're honored to be a part of an event that celebrates the arts, environment and community.

Chevy Runs Deep



©2012 General Motors. All rights reserved.

TOP of the PARK || special ATTRACTIONS



ERTH'S DINOSAUR PETTING ZOO

CREATED AND PERFORMED BY ERTH-VISUAL & PHYSICAL INC.

Friday, June 29, 5:00 pm & 7:00 pm

Saturday, June 30, 4:00 pm & 6:00 pm

Sunday, July 1, 4:00 pm & 6:00 pm

Admission Free | Power Center Lawn, right next to Top of the Park

Erth's awesome prehistoric creatures, from cute baby dinos to teeth-gnashing giants, live in a petting zoo like no other! These ancient life-like dinosaurs come to life in an eye-popping display that will thrill and delight audiences of all ages.

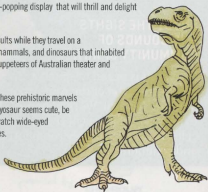
Dinosaur Petting Zoo allows heaps of interaction for kids and adults while they travel on a journey through prehistoric ages. Meet a menagerie of insects, mammals, and dinosaurs that inhabited the Earth millions of years ago, all controlled by the masterful puppeteers of Australian theater and visual arts company Erth.

Audiences will have the opportunity to feed, water, and care for these prehistoric marvels with simple lessons in animal husbandry. And while the baby Dyoosaur seems cute, be careful not to turn your back on the Tyrannosaur! Children can watch wide-eyed from a safe distance, or dare to get right up close to the creatures.

Duration: 45 minutes

Admission free, although donations are appreciated, seating is on the front lawn of Power Center, and early comers will get the closest views, blankets recommended.

sponsored by



Ready. Set. Evolve.

At Phire, we help organizations realize their ideal brand and then influence their customers at the point of decision. Traditional. Digital. Social. And beyond. Congratulations to the Ann Arbor Summer Festival for another extraordinary year. We're humbled to be a part.

www.phirebranding.com

[@phirebranding](https://twitter.com/phirebranding)

PHIRE
BRANDING COMPANY

TOP of the PARK || special ATTRACTIONS



Photo by Chris Hilliard

BACCHANAL

June 16 and July 7, 7:30 pm, Ingalls Mall

Be amazed by the Bacchanal performers as these flexible acrobats offer a spectacular display of aerial artistry and gravity-defying skills. Spinning, flipping and bouncing around, these urban circus artists will amaze audiences with their high-energy performances.



CIRCUS AMONGUS

June 17 and July 3, 5:00-8:00 pm, KidZone Tent

Have an unforgettable experience with Circus Amongus as they transform our youngest festival participants into Big Top artists! The troupe will present a kids mini circus camp at Top of the Park offering lessons in juggling, tightrope walking, trapeze arts, and much more.



DAVID ZINN

Chalk Artist | June 15-July 8

Enjoy David Zinn's whimsical chalk drawings on the streets and sidewalks around Top of the Park. David's clever work is known around the world and can be found in book illustrations, educational cartoons, and throughout the streets of Ann Arbor. Try to find all his drawings throughout the festival site.

What do Eisenhower,
The Ritz, and
Ann Arbor State Bank
have in common?



Five Stars.



Ann Arbor State Bank

The Personal Bank

a2sb.com (734) 761-1475

FDIC



TOP of the PARK || ACTIVITIES



KIDZONE

sponsor

BENARD L. MAAS
FOUNDATION

An interactive area for our youngest concert-goers, the KidZone tent provides a fun and safe area for children and their parents to discover and explore a wide variety of hands-on activities with different community partners. From getting temporary tattoos, creating homemade instruments, or jamming out rock band style, KidZone offers different nightly activities for families at Top of the Park.

CHILDREN'S ACTIVITY TENT
open nightly til 8pm

ROCK THE MALL

sponsor



media
WCDM

Rock the Mall is a teen music competition designed to encourage and support a new generation of musicians by offering young artists an opportunity to perform at the festival. Competitors include:

And the Elephant • Anna Elizabeth • Bad Television • Dymond Harding
• Gabe Novak • KayLyn Pace • SATURDAY • Undecided

TEEN MUSIC COMPETITION
June 19 @ 7pm

AADL'S KIDS ROCK

presented by



partner



Featuring some of the best national indie rockers-turned-kindie rockers playing kid-friendly music and tunes that make parents feel young again. Join us each Sunday at Top of the Park for this free family dance party with rockin' bands for the kiddie set.

R.O.C.K.	June 17	6:00-7:30 pm
Ratboy Jr.	June 24	6:00-7:30 pm
Anna Banana Band	July 01	6:30-7:30 pm
Big Bang Boom	July 08	6:00-7:30 pm

Prior to these family rock concerts, enjoy musical sets by some of the area's most popular children's entertainers.

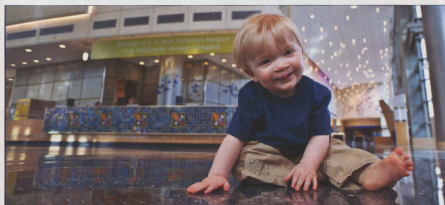
The Wanna Bees	June 17	5:00-5:45 pm
Jeanie B! & the Jelly Beans	June 24	5:00-5:45 pm
Supersonic Music Makers & The Fortytwo	July 01	5:00-6:05 pm
Ariel & Zoey & Eli, Too	July 08	4:30-5:30 pm

FAMILY CONCERT SERIES
sunday afternoons



Greenhills School
is proud to support the
Ann Arbor Summer Festival

www.greenhillsschool.org



Same extraordinary medicine, new extraordinary building.



University of Michigan
C.S. Mott Children's Hospital

www.mottchildren.org

TOP of the PARK || ACTIVITIES

GLOBAL PARTIES

presented by

TOYOTA

To celebrate the diverse community we serve, each year we throw a series of Global Parties at Top of the Park that spotlight different ethnic backgrounds and cultural traditions. Featuring free outdoor performances by local artists, these nights showcase lively music, street dancing, and cultural entertainment.

June 20 The Barons of Tang • October Babies
 June 27 Sumkali • BollyFit Dance • Noori
 July 04 Tumbao Bravo • Los Gatos

RETREAT

MIND-BODY SESSIONS
 saturdays & sundays @ 5pm

A series of mind-body sessions at Top of the Park, this alternative happy hour lets you enjoy a relaxing late-afternoon weekend workout with classes in yoga, Chi-Kung, Pilates, and dance fitness. Led by experienced practitioners, all sessions are free, and take place at 5:00 pm on the lawn of the Alumni Center.

June 16 Chi-Kung with Peaceful Dragon School
 June 17 Pilates with The Movement Center
 June 23 West African Dance Workout with World Dance Workout
 June 24 Dance Fitness with BollyFit™
 June 30 Gyrokinesis with The Movement Center
 July 01 Contact Improv with Contact Improv Ann Arbor
 July 07 Capoeira with CDO Michigan
 July 08 Yoga with The Ann Arbor School of Yoga

*Held on the front lawn of Power Center

ROCK & RECYCLE

presented by

WHOLE FOODS

We've made reducing our waste and hosting a more sustainable festival one of our goals for this year's celebration. To help, we're teaming up with our friends at Whole Foods Market for an extensive recycling program at Top of the Park. Look for colorful recycling bins throughout the festival grounds.

REDUCE, REUSE & RECYCLE
 all season



At Toyota,
 we celebrate
 differences.
 And the people
 who make them.

Toyota is proud to partner with the Ann Arbor Summer Festival and support their mission to present a world-class celebration of arts and entertainment. We are also excited to present the Global Parties and international programs celebrating our diverse communities and enrichment of the cultural experience to our region.



TOP of the PARK | | outdoor MOVIES



OUTDOOR CINEMA

presented by
ANN ARBOR

Enjoy movies under the stars on an inflatable screen at Top of the Park. Catch a selection of recent hits, cult classics, and family-friendly films screened in the open air. Be sure to bring comfy blankets, purchase popcorn and other treats from festival vendors, and enjoy cinema al fresco on the green.

wednights @ 10pm

June 17	Willie Wonka & the Chocolate Factory (1971)	June 27	Breakfast at Tiffany's
June 19	Sherlock Holmes: A Game of Shadows	June 28	The Big Lebowski
June 20	The Help	July 01	Jurassic Park
June 21	O Brother, Where Art Thou?	July 03	Close Encounters of the Third Kind
June 24	Hugo	July 04	Forrest Gump
June 26	Ghostbusters	July 05	Answer This!
		July 08	Dirty Dancing



The Ann Arbor Film Festival will be showing select shorts before the main feature on Thursday nights.

MOVIE THEME NIGHTS

Big Lebowski Night | Thursday, June 28

Hey, Man – salute “The Dude” and take part in an evening devoted to the cult classic, *The Big Lebowski*. Wear your bathrobe, bowling shirt, purple jumpsuit or Viking outfit, grab a few beers, and settle in to laugh away the night.

Dinosaur Night | Sunday, July 1

After spending the day with Erh’s T-Rex roaming the grounds of the Power Center, join your family and friends to watch Steven Spielberg’s *Jurassic Park*. We’ll do our best to keep the Velociraptors away for the night!

Trivia Night | Thursday, July 5

Brush up on local Ann Arbor trivia! Here’s your chance to show your knowledge about all things A2 with a pre-movie trivia quiz. Then enjoy locally filmed movie *Answer This!* made by brothers Mike and Chris Farah, both Ann Arbor natives.



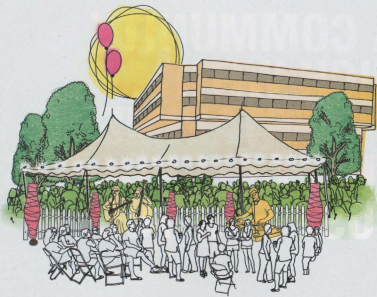
A COMMUNITY RICH WITH ENTERTAINMENT. THIS CALENDAR IS JUST FOR YOU.

On Monday, a book signing at Nicola’s. On Thursday, Baking with Beer at Zingerman’s Bakehouse. Tonight, it’s off to the Ann Arbor Summer Festival. AnnArbor.com’s Event Calendar is your complete guide to local events. Search by interests. Plan for your schedule. It’s a calendar just for you.

Visit AnnArbor.com/events

KNOW+TELL

 ANN ARBOR.COM



THE GROVE | WITHIN TOP ^{of} the PARK

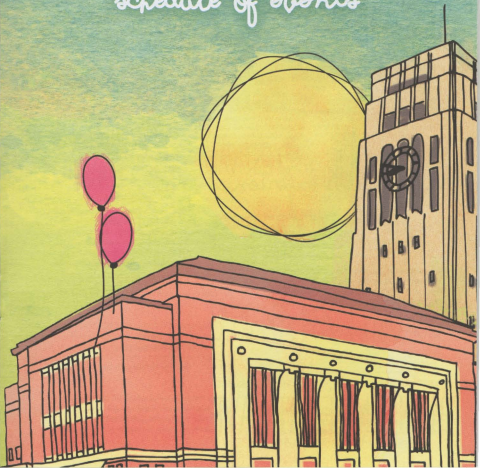
Top of the Park's wooded garden, nestled within the fenced beverage area on the west side of Ingalls Mall, is a relaxed atmosphere for guests to socialize and mingle over drinks underneath the stars. Twinkle lights and relaxed seating create a magical backyard ambiance within this intimate, comfortable area.

Join us in The Grove to enjoy a variety of activities, including: an acoustic concert series on early Fridays and Saturday nights; special wine and craft beer tasting events; and our weekend DJ series, After Dark @ Top of the Park, where the music starts spinning long after the sun goes down.

New to The Grove this season is the Roots Lounge presented by AnnArbor.com, the official online partner for the 2012 festival season. The new space serves as a cozy gathering place to meet, relax, network, and enjoy the evening's free entertainment in an outdoor environment. The lounge is open to all and offers free WiFi access as well as plenty of comfy seating to catch up on all the festival buzz.

ANN ARBOR SUMMER FESTIVAL

schedule of events



ANN ARBOR SUMMER FESTIVAL 2012

laugh at it. dance at it. dream at it.



BUILD YOUR *myFESTIVAL* experience

*myFESTIVAL

Go to www.a2sf.org and sign up to create your own Festival experience. Browse acts, add them to your account, and create a customized calendar of events from the Mainstage acts to Top of the Park and beyond.

A2SF.ORG | 734-764-2538

michigan league ticket office
911 N. UNIVERSITY AVE.

MONDAY 6/18

DARK MONDAY
Top of the Park Closed

7:00pm 22 1/2 Series @ Arbor Brewing Co.

TUESDAY 6/19

6:30pm **Teatime Tuesday**
Back to the Mall from Music Competition

10:00pm **Shrock Holmes: A Game of Shadows**

WEDNESDAY 6/20

6:30pm **Wind Down Wednesday**
The Barrens of Fang

8:00pm **Sticker Babies**

10:00pm **The Help**

THURSDAY 6/21

6:30pm **The Lucas Paul Band**

8:00pm **Cosmetics Spending @ Power Center**

8:00pm **The Ragbirds**

10:00pm **8 Brother, Where Art Thou?**

FRIDAY 6/22

5:00pm **Maggaline Fessom**

6:00pm **Dark-eyed Molly**

7:00pm **The Wavelengths**

8:00pm **Mezzanet Chorus**

11:00pm **After Dark w/ DJ Paw Paw**

SATURDAY 6/23

5:00pm **Retreat: West African Dance Workshop**

5:00pm **Molly Bancroft**

6:00pm **Fiber Makers**

7:00pm **So Evening with Ira Glass @ Power Center**

9:00pm **The Sun Messengers**

11:00pm **After Dark w/ DJ Chuck Oppenry**

SUNDAY 6/24

5:00pm **Retreat: Baby!**

5:00pm **Jessie H & The Jellybees**

6:00pm **Ruby X**

7:00pm **Phishies @ Power Center**

8:00pm **Drinker! Sideways**

10:00pm **Hugs**

MONDAY 6/25

DARK MONDAY
Top of the Park Closed

7:00pm 22 1/2 Series @ Arbor Brewing Co.

TUESDAY 6/26

6:30pm **Teatime Tuesday**
The Farmer & the Wolf

8:00pm **Beerfoot**

10:00pm **Electrobrats**

WEDNESDAY 6/27

6:30pm **Wind Down Wednesday**
Sunkid

7:30pm **BellyFit Dance**

8:00pm **Nelly McRay @ Power Center w/ Stachel Set**

9:00pm **Noroi**

10:00pm **Breakfast at Tiffany's**

THURSDAY 6/28

6:30pm **Bill Bryman & Co.**

8:00pm **The Math Walkalong @ Michigan Theater**

8:00pm **The Infamous Stringdusters**

10:00pm **The Big Lebowski**

FRIDAY 6/29

5:00pm **Erth @ Power Center Lawn**

5:00pm **Georgiy Rays**

6:00pm **Alejandra O'Leary**

7:00pm **Erth @ Power Center Lawn**

7:00pm **Tree City & The Centralband**

9:00pm **The Macpinks & Friends**

11:00pm **After Dark w/ DJ Moss Makas**

SATURDAY 6/30

4:00pm **Erth @ Power Center Lawn**

5:00pm **Retreat: Contact Improv**

5:00pm **Relaxed Remington**

6:00pm **Roadking**

6:00pm **Erth @ Power Center Lawn**

7:00pm **Kampage Swing**

8:00pm **Katou Wainwright @ Power Center**

9:00pm **Ernesta Sensational**

11:00pm **After Dark w/ DJ Brian Tomic**

SUNDAY 7/1

4:00pm **Erth @ Power Center Lawn**

5:00pm **Retreat: Contact Improv**

5:00pm **Supergro Music Makers & The Fortynines**

6:00pm **Erth @ Power Center Lawn**

8:00pm **Anna Banana Band**

8:00pm **Madcat & Kane w/ig Big Dave Steeds & Mike Sherran**

10:00pm **Jessie Park**

MONDAY 7/2

DARK MONDAY
Top of the Park Closed

7:00pm 22 1/2 Series @ Arbor Brewing Co.

TUESDAY 7/3

6:30pm **Teatime Tuesday**
The Ben Daniels Band

8:00pm **Rock Saged & The Brackets**

10:00pm **Shoe Encounters @ The Third Hand**

WEDNESDAY 7/4

6:00pm **The Capital Steps @ Power Center**

6:30pm **Wind Down Wednesday**
Tambora Bravo

8:00pm **The Capital Steps @ Power Center**

8:00pm **Lee Gates**

10:00pm **Forecast Camp**

THURSDAY 7/5

6:00pm **Chromatic Ethnic @ Michigan Theater**

6:30pm **Lightning Love**

8:00pm **Charlie Slick**

9:00pm **Chromatic Ethnic @ Michigan Theater**

10:00pm **Answer That!**

FRIDAY 7/6

5:00pm **Taylor Fernandis @ Power Center**

6:00pm **Ruaidh MacL**

7:00pm **The Saints of Soul**

8:00pm **Circa @ Power Center**

9:00pm **Bradley Josephus & The Love Animal Revolution Orchestra**

11:00pm **After Dark w/ DJ Joey B**

SATURDAY 7/7

5:00pm **Retreat: Capoeira**

5:00pm **Jessie Bellows**

6:00pm **Nervous But Excited**

7:00pm **Circobation**

7:30pm **Jumping 300 Acrobatics**

8:00pm **Circa @ Power Center**

9:00pm **Theretta Banks**

11:00pm **After Dark w/ DJ Chad ML**

SO LONG SUNDAY 7/8

4:30pm **Ariel & Zoey & EK, Too**

5:00pm **Retreat: Yoga**

6:00pm **Big Bang Boats**

8:00pm **George Bardot & The Kingsins**

10:00pm **Dirty Dancing**

FIRST FRIDAY 6/15

5:00pm **Norfolk Winkler**

6:00pm **Match By Match**

7:00pm **Wiz & The Rockability Revival**

8:00pm **Third Coast Kings**

11:00pm **After Dark w/ DJ Kirsten Caray**

SATURDAY 6/16

5:00pm **Retreat: Chi Kung**

5:00pm **Joe Bantz**

6:00pm **Chris Battigaglia**

7:00pm **Three Kitzman**

7:30pm **Aerial Acrobatics**

8:00pm **All Green @ Hill Auditorium**

9:00pm **Lady Sunshine & The X Band**

11:00pm **After Dark w/ DJ Michael Dykhouse**

SUNDAY 6/17

5:00pm **Retreat: Pilates**

5:00pm **The Vitana Bees**

6:00pm **R.O.C.K.**

6:00pm **Iaj Weekes & Adams**

10:00pm **Willy Wonka & the Chocolate Factory (1971)**

MAINSTAGE | HOW TO BUY tickets

online: A2SF.ORG | by phone: 734-764-2538

in person: MICHIGAN LEAGUE TICKET OFFICE, 911 N. UNIVERSITY AVE.

BUY EARLY & SAVE BIG WITH A FESTIVAL SAMPLER!

Give yourself flexibility and a taste of the entire Mainstage experience with the Festival Sampler, which lets you create your own individualized series and take advantage of early buying discounts when you purchase three or more shows through May 31.

BUY 3 SHOWS & SAVE 10% • BUY 4 SHOWS & SAVE 15% • BUY 5 SHOWS & SAVE 20%

The Festival Sampler is available by phone or in person only. Discount is only valid for tickets purchased for multiple shows (not multiple tickets to an individual show) and only applied when tickets are purchased in a single transaction through May 31. Discount cannot be applied to previous ticket orders or applied with other discounts or promotions. Festival shows at the Power Circle level (\$200+) enjoy the benefit of Sampler discounts throughout the festival season.

FREE SCHEDULE
For online and phone orders, there is a \$2.00 to \$5.00 per ticket service fee. There is no service fee for in-person orders. Online tickets are available up to three hours prior to the performance, at which point they must be purchased by phone or in person.
For festival performances at the Michigan Theater, there is an additional \$2.00 per ticket reservation fee applied to all online, phone, and in-person orders. This fee goes directly to the Michigan Theater for ongoing maintenance and facility improvements.
For Bonnie Raitt's performance, the artist has requested that \$5.00 of each ticket sold to this concert be donated to the ABO Foundation, which will distribute grants to local charities at the end of the tour.

FLEXIBILITY, SERVICE & CONVENIENCE

ticket exchange
Patrons may exchange tickets for a \$5.00 per ticket exchange fee. Each-patron tickets must be received by the Ticket Office (in mail or in person) at least one hour prior to the performance. The value of the tickets may be applied to another festival performance on the season. You may fax a photocopy of your torn tickets to (734) 647-1121. Lost or misplaced tickets cannot be exchanged.

worry no refunds
Please check your order and tickets carefully. All ticket sales are final.

ticket donations
Unused tickets may be donated to the festival for a tax-deductible contribution up to 15 minutes prior to the performance. Unused tickets that are returned after the performance are not eligible for a tax-deductible contribution. To receive a tax-deductible receipt, please call the festival office at (734) 894-5993.

lost or misplaced tickets
Call the Ticket Office at (734) 764-2538 to have duplicate tickets mailed to you at \$10-Cash. Duplicate tickets cannot be mailed. In the event of a double mailing situation with duplicate tickets, priority will always be given to the holder of the original tickets.

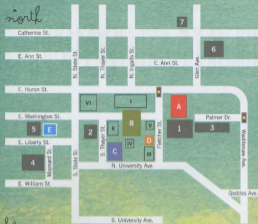
HELPFUL INFO

festival venues
ABO Auditorium: 825 N. University Ave.
Michigan Theater: 403 E. Liberty St.
Power Center for the Performing Arts: 121 Fletcher St.
Top of the Park: Ingalls Walk, 315 E. Washington St.

parking
Please visit our website to print a detailed map with venue locations and nearby parking options. Due to traffic, we strongly recommend that patrons arrive at least 20 minutes before their assigned travel time to park and arrive before the performance begins.

access & special needs
We are working hard to make the festival experience accessible to all patrons and anxious with disabilities. We offer the following for our patrons:
 • Select wheelchair and companion seating at all indoor venues
 • Handicap parking at multiple locations throughout the site
 • Courtyard wheelchair at venues, when confirmed in advance
 • Select interpreted performances and explained movie screenings

children
Children under the age of 3 will not be admitted to indoor festival performances in co-attendance of other patrons, unless otherwise notified. Please use discretion in choosing to bring a child to a show. Remember, everyone must have a ticket, regardless of age.



key

Venues

- A - Power Center
- B - Top of the Park (Ingalls Walk)
- C - ABO Auditorium
- D - Manufacture Theatre
- E - Michigan Theater

Parking

- 1 - Fletcher Street Structure
- 2 - Thayer Street Structure
- 3 - Palmer Street Structure
- 4 - Maynard Street Structure
- 5 - Liberty Square Structure
- 6 - GlenKinn Street Structure
- 7 - Catherine Street Structure

Other Landmarks

- I - Packard School of Graduate Studies
- II - Modern Languages Building
- III - Michigan League Ticket Office
- IV - Burns Memorial Tower
- V - Alumni Center
- VI - North Quad

PLAN YOUR VISIT

culinary row

Culinary Row at Top of the Park features some of Ann Arbor's favorite eateries and cafes. These food artists highlight specialty menu items that provide you with a selection of delicious meal options, including children's menu items and ready-to-eat prices for purchase.

You can purchase a beer or glass of wine as you enjoy your favorite food or movie. You'll also find bottled water and Coke products stationed throughout Top of the Park.

2012 FOOD VENDORS

Nut-N-Chocol, Noodles & Company, Oreo Q&I, Ray's Red Hots, Slick's Organic Pico, Satchel's BBQ, Shakers, Sugar Shack and Sweetwaters

2012 BEVERAGE PARTNERS

Coca-Cola Bottling Company, O & W, Inc. and U.S. Wine Imports.

tips & guidelines

For the comfort and safety of all patrons, please respect the following rules:

- *No outside food and beverages—help-keep Top of the Park a free event by supporting our Culinary Row vendors
- *No dogs or other pets allowed, except personal assistance dogs
- *Shirts and shoes required
- *No bicycles, roller blades, scooters, or skateboard riding inside the event area—take risks are available there, about the site
- *No strollers
- *No alcohol beyond the licensed beverage garden area
- *No climbing on scaffolds, towers or stages
- *No walking in the fountain
- *No unattended walking

*Be sure to bring sunscreen, hats, lawn blankets, and a photo ID for access to the beverage garden.

Please do not bring an outside food or drink to the festival. When you purchase these items from Top of the Park vendors, you are supporting the event and helping to keep it admission free.



First Martin Corporation

Ann Arbor. A City of Innovation. A Center for the Arts. A World of Opportunity.

First Martin Corporation is a proud sponsor of the Ann Arbor Summer Festival. Enjoy the show.



wendy martin PHOTOGRAPHY



WENDY MARTIN PHOTOGRAPHY

On location, natural light photographer specializing in high school seniors and wedding photography.

www.WendyMartinPhotography.com

248.321.1864

THE GROVE | ACTIVITIES

TASTING TUESDAY

presented by
EDWARD SUROVELL REALTORS

Learn about beer varieties and the brewing process in this craft beer sampling on Tuesdays at Top of the Park. For a \$15 tasting fee, attendees can sample multiple beers of each evening's featured microbrews.

Tuesdays, June 19, June 26, and July 3
 No reservations needed; just show up.

BEER-TASTING EVENT

tuesdays @ 6:30 pm



WIND DOWN WEDNESDAY

presented by
EDWARD SUROVELL REALTORS

Enjoy a wine-tasting event on Wednesdays at Top of the Park. For a \$15 tasting fee, attendees can sample multiple wines from that evening's featured selection.

Wednesdays, June 20, June 27, and July 4
 No reservations needed; just show up.

WINE-TASTING EVENT

wednesdays @ 6:30 pm



AFTER DARK @ TOP OF THE PARK

sponsor



media

AN ARBOR... logo

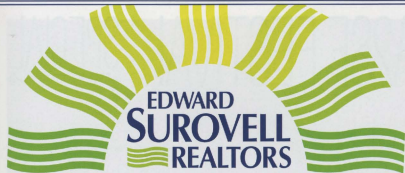
After Dark puts a new "spin" on festival moonlighting. Every Friday and Saturday night, The Grove at Top of the Park hosts a late-night chill lounge after the bands stop playing. An exclusive showcase of guest DJs will be spinning tunes, and drink specials will be offered until midnight in this cozy outdoor area. Ages 21+.

June 15	DJ Kirsten Carey	June 29	DJ Maxx Makau
June 16	DJ Michael Dykehouse	June 30	DJ Brian Tomsic
June 22	DJ Paw Paw	July 06	DJ Joey D
June 23	DJ Chuck Sipperley	July 07	DJ Chill Will

LATE-NIGHT DJ SESSIONS

fridays & Saturdays @ 11pm

tickets A2SF ORG ☎ 734.764.2638



EDWARD
SUROVELL
 REALTORS

CELEBRATING 30 YEARS

Celebrating 30 years of service to the community. Founded in Ann Arbor, serving all of southeast Michigan.

surovell.com

Heineken

Red Stripe

BREWED IN JAMAICA

Proud to sponsor
 After Dark @ Top of the Park

enjoy the festival
IN VIP STYLE!

This season, the VIP Green Room at the Power Center, the Power Circle Major Donor Dinner, and the Volunteer Appreciation Party are all presented by our friends at Douglas J. Salon and the Douglas J. Aveda Institute, the exclusive sponsor of the VIP Experience at the 2012 Ann Arbor Summer Festival.

In addition, look for representatives from Douglas J. at the festival on select nights throughout the season, offering product sampling, VIP gift bags, and more.

Douglas J. salon
 ANN ARBOR

AVEDA INSTITUTE

A2SF FESTIVAL | SPECIAL programs

JUMP:IN

a photo exhibit by **MYRA KLARMAN**

power center lobby
june 21 - july 7

The Ann Arbor Summer Festival is pleased to present a special exhibit of large-scale prints by artist and festival photographer Myra Klarman. One of Ann Arbor's most celebrated portrait photographers, Klarman's new exhibition offers a visually arresting look at the faces, places, and special moments that make up the Ann Arbor Summer Festival.

The JUMP:IN photo exhibit is viewable when the Power Center lobby is open for Mainstage performances including:

Thursday, June 21	7:00-10:00 pm	Saturday, June 30	7:00-10:00 pm
Saturday, June 23	7:00-10:00 pm	Wednesday, July 4	4:00-10:00 pm
Sunday, June 24	6:00-9:00 pm	Friday, July 6	7:00-10:00 pm
Wednesday, June 27	7:00-10:00 pm	Saturday, July 7	7:00-10:00 pm



We are U.

We're proud to be part of the A² business community...and we've been so for 75 years.

Featuring three of the finest sheet-fed presses, a driven pre-press department, an array of in-house finishing and binding offerings, turnkey mailing services, FSC & SFI green certification, a brand new variable data + digital print system, and a sales and service department to back it all up, we are Ann Arbor's premier printing source.



Rob, Deb + Mark

University Litho • 4150 Varsity Drive, Ann Arbor • 734.973.9414 www.ulitho.com

A2SF FESTIVAL || SPECIAL programs

33 1/3 SERIES



READING & LISTENING PARTY
mondays @ 7pm

Join us for a reading-and-spinning session featuring local writers, music aficionados and industry insiders, sharing excerpts from Continuum Books' 33 1/3 series of books about classic rock albums, followed by a guest dj mixing from the songbook of that evening's celebrated artist.

- June 18 **Guest Reader: Nicholas Rombes | Author of "Ramones" and Professor of English at University of Detroit-Mercy**
33 1/3 Selection: The Ramones "Ramones" by Nicholas Rombes
WCBN DJ: Kristin Sumrall
- June 23 **Guest Reader: Ivan Kral | Composer, filmmaker, guitar, bass and keyboard player with the Patti Smith Group**
33 1/3 Selection: Patti Smith "Horses" by Philip Shaw
WCBN DJ: Sue Dize
- July 02 **Guest Reader: Jim Fleming | Founder, Fleming Artists**
33 1/3 Selection: Johnny Cash "American Recordings" by Tony Tost
WCBN DJ: Jerry Mack

33 1/3 (Thirty-Three and a Third) is a series of short books about a wide variety of albums, by artists ranging from James Brown to the Beastie Boys. Launched in September 2003, the series now contains over 85 titles and is acclaimed and loved by fans, musicians and scholars alike. The series title refers to the speed (33 1/3 revolutions per minute) of an LP album.

Presented with permission from Continuum Books.

presented in partnership with  and 

ARBOR BREWING COMPANY PRESENTS

beer that rocks

ON TAP EXCLUSIVELY AT ABC



proceeds benefit ann arbor summer festival

114 east washington street | downtown ann arbor | arborbrewing.com | (734) 213-1393

festival saison RETURNS!

Enjoy a creative take on a classic summer style made with spicy rye malts and pink peppercorn for a zesty and refreshing thirst-quenching brew.



Available exclusively at Arbor Brewing Company, with \$1.00 per pint donated back to support Top of the Park.

88.3^{FM}

WCBN FM
ANN ARBOR

Student Radio from the
University of Michigan



Give \$3 keep TOP FREE!

Admission to Top of the Park is free, although a suggested donation per visit of \$3 per individual or \$5 per family is encouraged.

Thank you for your nightly support!

TOPshop

outfitted by

UNDERGROUND PRINTING
UGP
www.undergroundprinting.com



Visit the Top of the Park's TOPshop for festival t-shirts, posters, and artist merchandise. Open nightly.

THANK YOU, FRIENDS!



The Ann Arbor Summer Festival is generously brought to you by an entire community of donors, volunteers and patrons. We deeply appreciate your ongoing support. You are the ones who breathe life into this celebration and help us grow and flourish year after year.



our donors

Hundreds of individuals, foundations, corporations, and partner organizations make gifts each year to support the festival, and thousands more contribute onsite at Top of the Park each time they visit.



our volunteers

Over 350 enthusiastic volunteers work thousands of hours each festival season serving as ushers, greeters, interns and ambassadors. We want to send a huge thank you to these dedicated individuals who work so hard each and every year.



our patrons

More than 60,000 people attend Mainstage and Top of the Park attractions each season and generously support the festival by buying concert tickets, enjoying concessions, hosting tent parties, and patronizing our food vendors.

Join the fun! We have many opportunities for people with a variety of interests, skills and passions. To learn more about how you can get involved with us, please visit A2SF.org.

FESTIVAL 5000

Festival 5000 was created in 2008 as part of the Ann Arbor Summer Festival's 25th season celebration. Members pledge a minimum donation of \$5,000 over a 5-year period.

Carol Amster

Becky and Erik Bakker
Lois and David Baru
Elissa and Richard Benedek
Tracey and Mark Burnstein
Mary and Ed Cady
Susan and Bill Chandler
Jennifer and Larry Coates
Anne and Howard Cooper
Bette and Alan Cotzin
Martha Darling and Gilbert S. Omenn
Ann and Hal Davis
Nan and Joe Decker
Jeanine A. DeLay and John K. Lawrence
Leslie Desmond and Phillip Stoffregen
Cynthia and Andrzej Dlugosz
Dallas Dorr
Darla and Michael Dubin
Karen and Samuel Edwards
Jackie and John Farah
Rachael and Peter Fayroian
Dawn and Roland Foerg
Linda and Larry French
Julie and Thomas Fritz
Patricia Garcia and Dennis Dahlmann
Rita and Charles Gelman
Sharon and Lazar Greenfield
Bonnie and Larry Hagerty
Sheila and Steven Hamp
Catherine and Jeff Hauptman

Larry Hauptman

THE MOSAIC FOUNDATION (of R. & P. Heydon)
Merrill Howard
Debra and Max Hutton
Elizabeth and Rick Jarzembowski
Stephanie King-Benz and Bruce Benz
Patricia King
Connie and Tom Kinnear
Tamara L. Kutter
Wendy and Ted Lawrence
Kathy and Leo Legatski
Elizabeth Mall
Betsy Yvonne Mark
Pat McCune and Edward Stein
Margaret McKinley
Tracy and Y. Jamie Mistry
Susan and Mark Orringer
Linda and Bill Powers
Jim and Bonnie Reece
Jeffrey Reece
Annette and Peter Schork
Ann and Tom Schriber
Kimberly Scott and Oni Werth
Ellie and Dennis Serras
Nancy and James Stanley
Jan and Nub Turner
Laurie and Tim Wadhams
March Walker
Toni and Donald Walker
Eileen and Ambassador Ronald Weiser

EUGENE B. POWER CIRCLE

In honor of our founder, the Eugene B. Power Circle was created to recognize our most dedicated and inspirational donors who support the mission of the Ann Arbor Summer Festival.

POWER CIRCLE LIFE MEMBERS \$100,000+ cumulative, individual donations

Connie and Tom Kinnear

VISIONARY \$5,000+ annually

Richard P. Whitker Charitable Fund
Molloy Foundation, Inc.
Wendy and Ted Lawrence

ADVOCATE \$2,500 - 4,999 annually

Alice Dobson
Ann Arbor Area Community
Foundation Rosalie Edwards/
Vibrant Ann Arbor Fund
Anne and Howard Cooper
Gwynn and Jim Sterken

LEADER \$1,000 - 2,499 annually

Carol Amster
Steve Arbaugh
Becky and Erik Bakker
Irene and Jack Ball
Christie and Tom Barrett
Lois and David Baru
Elissa and Richard Benedek
Stephanie King-Benz and
Bruce Benz
Marty Belts
Nancy Brennan and Bradley Cross
Tracey and Mark Burnstein
Mary and Ed Cady
Susan and Bill Chandler
Jennifer and Larry Coates
Bette and Alan Cotzin
Pat and Paul Cousins
Martha Darling and
Gilbert S. Omenn
Ann and Hal Davis
Jeanine DeLay and John Lawrence
Cynthia and Andrzej Dlugosz
Dallas Dorr
Julie and Charles Ellis
Jackie and John Farah
Rachael and Peter Fayroian
Julie and Thomas Fritz
Dawn and Roland Foerg
Patricia Garcia and
Dennis Dahlmann
Rita and Charles Gelman
Zita and Wayne Gillis
Sharon and Lazar Greenfield
Buhr Foundation
Michelle and Lorne Groe ★
Bonnie and Larry Hagerty
Sheila and Steve Hamp
Catherine and Jeff Hauptman
Larry Hauptman
Merrill Howard
Debra and Max Hutton ★
Elizabeth and
Richard Jarzembowski
Connie and Tom Kinnear
Kathy and Leo Legatski
Tamara L. Kutter
Betsy Yvonne Mark
Martin Family Foundation
Pat McCune and Ed Stein
Margaret McKinley
Ann R. Meredith
Tracy and Y. Jamie Mistry
Jennifer and Frank Moore
Dana Muir
Susan and Mark Orringer
Patricia Pooley
Linda and Bill Powers
Bonnie and Jim Reece
Jeffrey Reece
Ellie and Dennis Serras
Ingrid and Cliff Sheldon
Annette and Peter Schork
Ann and Thomas Schriber
Nancy and Jim Stanley
Ines and Eric Storoh
Laurie and Tim Wadhams
March Walker
Toni and Donald Walker
Linda Woodworth and Paul Morel
Eileen and Ambassador
Ronald Weiser
Amy and Robb Woulfe



"The Summer Festival is the best thing about summer in Ann Arbor. It's great to see so many parts of the community come together to share in the fun!"

- CYNTHIA AND ANJ DLUGOSZ

FRIENDS OF THE FESTIVAL

ENTHUSIAST

\$500-\$999 annually

Susan and Larry Adler
Victoria and Robert Buckler
Betts and Don Chisholm
Salli Christensen and Mike Gould
Melinda and Wayne Colquitt
Shella and Ronnie Crosswell
Tomas Darnton
Darla and Michael Dubin
Bettye and Chris Elkins
Guillermo Flores
Maureen Foley and John Blankley

Stephanie and Tim Freeth
Karen and Al Gallup
Karen Goldman
Mary and Kent Johnson
Kerlin A. Jones
Mary and Stephen Kerr
Patricia King
Jean A. Lawton and James H. Ellis
Olga Moir
Barbara and Wallace Prince
Anuja Rajendra & Vijay Sankaran
Tyronne Schiff

Erich S. Schiffer
Kimberly Scott and Oni Werth
The Wally and Jo Strobel Foundation
Dr. Henry H. Swain
Daniel Washington ★
Karen and Karl Weick
Jerry and Jack Weidenbach
W. Scott Westerman, Jr.
Nancy and Bill White
Dianne Widzinski
Betty and Bob Wurtz
Karen Yamada and Gary Dolce

"We always look forward to the festival and especially enjoy dancing the night away to a great Latin band. It's not summer in Ann Arbor until the Summer Festival begins!"

—INES AND ERIC STORHOK

PATRON

\$250-\$499 annually

Judy and Alec Allen
LeAnn and Joe Auer
Martha and Bob Aulse
Debra and Don Bailey
Robert Baird
Sylvia Barge and Newton Siever
Deb and Dave Barnes
Janis Rubin and Michael Allemang
Booth Plumbing & Heating Co
Janet and Louis Callaway
Sally Camper and Bob Lyons
Diane and Scott Carter
Anne Chase
Jonathan Cohn
Annenarie and Paul Dolan ★
Susan and Ted Dushane
Clare M. Fingelle
Lucia and Doug Freeth
Elizabeth and William Frieze
Teresa Gallagher and Jonathan Ayers
Astrid Giese and Gillia Smith
Nancy and Steve Goldstein
Barb and Mitch Goodkin
Sue and Whit Gray
Linda and Richard Greene
Beth Halloran and Claire Casselman ★
Halimah Hassan and J. Frank Yates
D. Craig Hausman
Dennis Hayes
Margene and Gregory Henry
Chris and Dave Horn

Jill Johnson and Andrew Powers
Mary K. Joscelyn
Trish Joyce and Steve Slack
Margaret and Todd Kephart
Martha and Ed Kimball
Mabelle and Jim Kirk
The Klinick Family
Rosalie and Ron Koenig
Laura and Jim Kosteva
Mary and Ed Krasny
Kathleen Ricza and Roger Pothus
Laura Kaufman and Andrew Czapp
Francine Lafontaine and Robert Picard
Jill Latta and David Bach
Judie and Jerry Lux
Nancy and Todd Leff
Michelle Leshan and Steve Rubenstein
Lou Lewenstein and Jonathan Trobe
Marilyn and Duncan Magoun
W. Harry Marsden
Fran and Irwin Martin
Mc. and Mrs. Thomas McMullen
Cindy and Mike Messmore
Bonnie Metzger and Barbara Therrien
Ann Mulhern and Raymond Maturo
Barbara Nevins-Soeng and
H. Kaz Soeng
Sharon and Chuck Newman
Gloria and Rick O'Neill
Deborah Paul-McDonald
and Kevin McDonald

Katie Pelz-Davis
Robin and John Peterson
Sally and Timothy Peterson
Joanne and John Phibbs
Melissa and Ray Rabidoux
Sandra Reagan
Ginny and Ray Reilly
Margaret J. Rossler
Katie Richards-Chuster
and Tim Schuster
Elizabeth and Ricardo Rodriguez
Susan Rosegrant and David Lampe
Rennie and Michael Roth
Sue and Jim Royce
Emily Salvette
Norma and Dick Sarns
Kimm and Michael Sarosi
Drs. Rosalya Sarver
and Stephen Rosenblum
Camille and Dennis Seveance
Rodney Smith
Mary and George Tewksbury
Madeline and Steve Thiry
Jane and Nigel Thompson
Bette M. Thompson
Linda and Bruce Thomson
Marianne Udow-Phillips and
Bill Phillips
Vickie and Richard Van House
Jennifer and Don Welch
Beth and I.W. Winsten

SUPPORTER

\$100-\$249 annually

Ruth Addis and Marj Schloff
Sandy and Ray Aldrich
William Aery ★
Elizabeth Anderson & David Jacobi
Hartene and Henry Appelman
Applied Safety & Ergonomics Inc.
Mari Aeno and Dave Hutson
Dr. and Mrs. Jerald G Bachman
Barbara and Daniel Balbach
Suzanne Ballew
Samantha and Daniel Banda
Emily Banders, MD
Pat Banille
Lindsay and Frank Bateman
Sara Billmann and Jeffrey Kuras
Joan Binkow
Martha and David Bloom
Mimi and Ronald Bogdassian
Kathy Bonds and Mark Mou
Dr. and Mrs. Robert Borfield
Richard A. Boserman
Joan Brieland and Gregory Shoultz
Wendy and Scott Brosnar
Rays and Marlon Brown
Albert C. Cattell
Michelle and Andrew Caird
Allison Carey and Luis Benilia ★
Alma Rosa and Karan Carpenter
Noreen and Lou Camigan
Dennis Carter
Lana and Fred Chang
Myung Choi
Amy and John Clark
Cindy and Ed Clarke
Cheryl and Brian Clarkson
Kath and Rick Cohen
Judy and Kevin Compton
Joyce and William Connett
Susan and Arnold Coran
Lorraine and Alan Cordeiro
Wendy and Richard Correll
Karen G. Crawford
Kathleen Crispell and Tom Porter
Constance Crump and Jay Simrod
Ellie Cruz and Kevin Hart
Martha and Thomas Daniels
Sharon and Michael Darga
Judi and Ed Davidson
Jean Decker Connell and Phelps Connell
Christina and Peter Deminger
Marie Devany and Martin Pernick ★
Sally and David Dalka
Molly Dibson
Lori Dostal
Ann and Richard Dougherty
Patty Dabin
Phillip and Allen Duncan
Brad Dyle ★
Barbara and William Ebeling
Barbra and Peter Eberbach ★

Odes and S.J. Elden
Cheryl and Bruce Elliott
Alexis and Jon Elliott
Jill and David Esau
Martina Harmon Eschall and Daniel Eckiel
Erica Fitzgerald and Peter Imber ★
Beatrice and William Fox
Shari and Ben Fox
Sara and Michael Frank
Marcia and Leon Friedman
Jerald Frost
Judy and Richard Fry
Louise and Otto Gajo
Virginia and John Gajer
Jane Galantevitz
Sandra Gast and Greg Kotecki
Beverly Jeanne Gilrow
Maureen and David Ginsburg
Jenni and Neil Glysson ★
Mora and Edward Goldman
Suzanne D. Goodrich
Kathryn Goodson and John Hieftje
Lou German and Mark Ritz
Sue and Charlie Gott
Colette Grabb
Martha and Larry Gray
Mike Gray
Robert Green
Linda and Mel Grishaber ★
June and David Griffenbogen
Susan Guzynski and Gregory Mazure
Michael C. Hamner
Amy Harris and Malcolm Sicksels
Connie and Martin Harris
Jan and Dave Hartman
Ginnda Haskell and Rick Reehman
Jane and Dan Hayes
Anne Heacock and Stephen Fisher
Mary and William Heitzog ★
Gloria Heifand and Harvey Michaels
Pam and Bill Henry
Debbie and Norman Herbert
Margaret and Roland Hiss
Lee Hollander and Tammie Nahra
Carol Hultenschlad and Bruce Wilson
Nan and Peter Holmes
Carol and Ken Howe
Inen Balance Therapy
The Jaasi-Pittora Family
Eri and Barnaby Johnson-Fry ★
Beth J. Johnson ★
The Johnson-O'Connor Family
Barb and Larry Kafka
Lally and Gordon Kane
Sally and David Kennedy
Shira and Steven Klein
Fred Knight ★
Elaine and Mark Kopka
Robert Krasny
Martha and David Kriebel

Jessie and Brian Kuehn
Julie and Lou Leonard
Carolyn Dana and Donald Lewis
Carolyn and Paul Lichter
Betty and Dr. Len Lefstrom

"We love taking our kids to Top of the Park. It's one of the highlights of their summer and they enjoy everything about it—the music, the people, the food. We want to be sure that every family has this opportunity and that's why we support the festival."

—DEBORAH PAUL-McDONALD
AND KEVIN McDONALD

Sandi Lopez
Lois and Bill Lovejoy
Kenneth Magee
Joan Margesson and Ken Silk
Richard Martin
Doris Morrison
Judy and Roger Maugh
Catherine and Doug McClure ★
Jill McDonough and Greg Merriman
Lisa and Tom McKerns
Kathy and Bert Moberg
Susan Montgomery ★
Molly Motherwell
Susan and Roy Muir ★
Kit and Cary Steinway
Barbara Murphy and Gavin Cadie
Susan and Terry Murphy
Virginia Murphy and David Uthmann
Deanne and El Weinberger
Amy Nesbitt and Robert Marshall
Dorothy and Frank Nesbitt
Janet Netz
Gloria and Michael Nette
Arthur S. Nusbam
Billic Oelberg and Sandro Ciani
Flora Odetola
Jane and Ed Outsay
Cecilia and Al Pais
Fair of Docs Consulting
Beth and Todd Passolo
Dorethy and Donald Peterson
Nancy S. Pickett
Mary Ann and Robert Pierce
Jan and Morand Piert
Debbie and Jeff Pike

SUPPORTER \$100-\$249 annually

Jennifer and Mark Pinto
Elsine Pomeranz and Joel Bergman
Lorna and Jerry Prescott
Karen Prochowc & Mark Stranahan ★
Diana Raimi and John Dryden
Anita and Daniel Rajkovich
Linda and Roger Kaye
Apost and Stephen Reading
Mary Beth and George Reinsoner
Patricia and Martin Reineiman
Patti Reuter-Lorenz ★
The Ribbits Family
Kimberly and William Rice
Sally and Bruce Richardson
Alyson Robbins and Robert Oliver
Myles Rooney
Steve Rullier
Miguelis Samaniego ★
Linda and Jose Santiago
Lisa and Howard Saulles
Maya Savarino
Diane Scarpace ★
Debbi Schaubman
Mary and Charles Schlanderer
Judith and Art Schuman
Lats and Walter Scott

Deris and Stan Sekerka
Richard Shapiro ★
Pat and Donald Sharpe
Catherine Anne Shaw and Evans Young
Carol and Patrick Shery
Roni and Max Shten
James Simpson
Elaine and Bob Sims
Lisa and Jeff Smith ★
Sandra Sprinl Earl
Carolyn Spencer
Laurel and Chad Spencer
Katherine Spindler
Tamar Springer and Steve Stanzoff
Jessica Sprovotoff ★
Judith Starke ★
Anna Stefanopoulos and
James Freudenberg
Christine Sher
Mira Sussman
Deborah and David Swartz
Sweetwater's Cafe
Suzanne Tainter and Kenneth Boyer
Nili Tannenbaum and Roger Albin ★
Patricia and Tom Taylor
Randall Ten Haken

Denise Thal and David Scooby
Bonnie Thompson
Alicia Torres and Frank Legacki
Bob Treat
Lisa and Jeff Tulin-Silver
Janeth and Nub Turner
Elihu Ullman
Colleen Vance and William Price
Lou A. Bechard
Teresa and George Wegeli
Carolyn and Jack Wallace
Deborah and Mike Weber
Susan and Doug Weber
Lisa and James Weidenbach
Lisa and Stephen Weiss
Jan and Ron Wetzel
Lynn and John White
Ann and Clayton Wilhite
Richard C. Wilson
Sandra L. and Michael C. Wolf
Jean Wong and Ralph McKee
Pam and Bill Wood
Lynn Wright
Michelle and Michael Zabriskie

FAN \$50-\$99 annually

Sally and Peter Allen
Mami and Ken Arnett
Tim Ahan
Monica and Dan Atkins
Ruthanne and Milton Baker
Cheri Bell ★
Barbara and Sheldon Berry ★
Mark Bertz
Linda and Maurice Binkow
Ariane Borkan ★
Victoria C. Botek and
William M. Edwards
Sarai Brachman Shoup
and David Shoup
Michael Bray ★
Ronald Burnett
Stephanie Bettyeff and
Andy Overmire
Patricia and Paul Carson
Susanne and Paul Carlman
Beverly and Marlon Chetnik
Catherine Chow
Paula Christensen
Photography and Video
Sally Churchill
Dina and Max Cooz ★
Karen and Robert Collins
Carolyn and Tom Conlin
Joanne and Towler Culbertson
Julie Dalava
Michael Deming ★
Robert Dornellan
Margaret and Michael Entwle

Barbara Everett-Bryant
Marty Fischhoff
Susan Fisher and John Waidley
Carol and Mitchell Fleischer ★
Pamela Fors and William Marlett
The Friedler Family
Susan Friedlich and
Richard Ingram
Patricia Garmon Lay and
Michael Lay
Do Garcia and Bob Gilleit
Jan Garfinkel and
Michael O'Donnell
John Goides Rose and
Robert Ross
Mary Gochi
Jean and Bill Gosling
Mary Sue Grant
Linda and Roger Grokin
Susan and Barry Gross
Stephen Gruber and Family ★
Kat Hagadorn
Cami and Karl Hellman ★
Darlene Hermann ★
Joanne Hernandez
Kay Holsinger and
Douglas C. Wood
Robert Hopkins
Ann Marie and Erich Jensen
Lisa and David Joseph
Martha and David Kershaw
Leah and Paul Kiley
Linda and Melyni Korukian

Steyhan Krebs ★
Barbara Lamar and Terry Adams
Gerald Lapidus
Leslie Lawler & Matthew Craft
Mr. John Lesko Jr.
Bruce Louphy
Amanda and
Patrick McConville ★
Ernestine R. McGlynn
Holy Merle-Benner and
Bruce Benner
Laurel Moore
Arion Morris and Jeff Meyers
Paul Nelson ★
Haven New
Kathy and Mike O'Rear
Nancy and Colin Oatley
Julie and Michael Perez
Connie and Donald Peusch
Jason Ploeman ★
Deborah and John Pouier
Barbara and George Pomey
Linda Quinn
Beth and Lou Dullen
Pamela Raymond and
Stephen Ernst
Elizabeth A. Rose
Julie and Randy Roth
Susan and Ryan Rotman
Karyn and David Sager
Betha Schlossberg
Rudolf Schmei
Karyn and David Schoem

Thomas Schramm ★
Laune and Peter Schwartz
Hanneli Selas
Jean and Thomas Shope
Sandy and Dick Simon
Mary Stadel
Ann and David Staiger
Sue Stevens and Chip Kramer
Susan and Matt Stoney
Christina Tabacka ★
Janet and John Talbot
Margaret Talburt and Jim Pegg
Susan and Jerry Tarpley
Jeremy M.G. Taylor
Paula Trail
Alex Train
Emily Teanimo and Tom Stockton
Barbara Underwood and
David Patria
Leticia Valdez and
Thomas Atkins ★
Cami Vezar
Sarah and Dr. Edward Walton
Susan and Neal Weinberg ★
Lois Weisman
Susi Wiewcowski and
David Gordon
Noel and Chris Winkler
Charlette Wolfe
Beverly Yashar and John Mesberg
Linda Yohn and William Labedski

SPECIAL ACKNOWLEDGEMENTS

TRIBUTE GIFTS

In memory of Peter Chetnik
from Beverly and Marlon Chetnik
In Honor of Julie and Jerry Lax
from Martha and Thomas Danies
In memory of Dr. Mel Barclay
from Mary and Ted Johnson
In memory of Howard Dubin
from Patsy Ouzis
In memory of Joseph and Ruby Dushane
from Susan and Ted Dushane
In memory of Virginia Schwelger Sinn
from Patricia and Peter Fink

In Honor of Connie Kinnear
from Jim and Dave Hartmann
In Honor of Don and Betty Chisholm
from Patricia Garcia and Dennis Dehmann
In memory of Dr. Mel Barclay
from Mary and Ted Johnson
In honor of Julie and Thomas Fritz
from Barbara Moore-Sony and Dr. Max Storig
In memory of Theophilus Odetola
from Felo Odetola
In honor of Tom & Connie Kinnear's
40th Anniversary
from Sally and Timothy Peterson

In Memory of Allan Dreyfuss
from Patricia Pody
In memory of Barbara Regner
from Holy Merle-Benner and Bruce Benner
In honor of Juli Pinski
from Diane Scarpace
In memory of Julie K. Evans
from Patricia and Tom Boyer
In memory of Lucy Washington
from Daniel Washington

IN-KIND GIFTS | \$250+

Ann Arbor Downtown
Development Authority
Blockbuster
Coca-Cola Bottling Co.
Delux Tents & Events

Fantasee Lighting
Gratz and Mainstreet Ventures
Hamlet Construction
JJR, Landscape Architecture,
Planning & Urban Design

Katherine's Catering Inc.
Oasis Her Tub Gardens
Quest Productions
The Produce Station

GOVERNMENT, FOUNDATION & MATCHING GIFTS

Arbor Research Collaborative for Health
AT&T Foundation Matching Gifts Program
Benard L. Maas Foundation
City of Ann Arbor
Columbia Asset Management
Google Matching Gifts

Howard J. Cooper Fund
Johnson Controls Foundation
JPMorgan Chase Matching Gift Program
Keweenaw Club of Ann Arbor Foundation
National Endowment for the Arts
Pfizer Foundation Matching Gift Program

Thomson Reuters Foundation
Matching Gift Program
UBS Employee Giving Program
University of Michigan

LEGACY CIRCLE

The Legacy Circle honors individuals who have included the Ann Arbor Summer Festival in their estate plans:

Bette and Alan Cotzin
Patricia M. Garcia

Elliott S. Guttman
Connie and Tom Kinnear

Bonnie and Jim Reece
Margaret R. Somers

IN MEMORIAM

Friends of the festival who have passed away, we are forever grateful for their connection with us:

Seth Bondar
Howard Dubin

Ray Fullerton
Stephanie Petri Lord

Greg O'Dell
James Nicholas Skupski

GIVING LEVELS

EUGENE B. POWER CIRCLE

In honor of our founder, the Eugene B. Power Circle was created to recognize our most dedicated and inspirational donors who give \$1,000 or more annually to support the mission of the Ann Arbor Summer Festival.

VISIONARY | \$5,000-

- Opportunity to be recognized as an individual underwriter for a Mainstage performance
- Four complimentary VIP tickets to the underwritten performance
- Opportunity to meet featured artist(s) in underwritten performance, as available
- Plus, all benefits listed below

ADVOCATE | \$2,500 - 4,999

- Invitation to a private lunch or dinner with the Festival Director
- Complimentary merchandise and signed memorabilia, as available
- A season parking pass
- Plus, all benefits listed below

LEADER | \$1,000 - 2,499

- Invitation to annual Power Circle dinner
- Priority seating anytime, as available
- Recognition in lobby signage during the Festival
- Access to the donor concierge service
- Artist meet and greets, as available
- Six parking passes (total)
- Plus, all benefits listed below

FRIENDS OF THE FESTIVAL

ENTHUSIAST | \$500 - 999

- Invitation to opening night party at Top of the Park
- Access to VIP Donor Green Room at Power Center
- Four parking passes (total)
- Plus, all benefits listed below

PATRON | \$250 - 499

- Invitation to season announcement party
- Mini pack of "I Gave" stickers to wear during the Festival
- Two parking passes (total)
- Plus, all benefits listed below

SUPPORTER | \$100 - 249

- Advance ticket purchase opportunities
- Priority seating for ticket orders received before June 1, as available
- One parking pass
- Plus, all benefits listed below

FAN | \$50 - 99

- Recognition in the Festival Guide and on Festival website

* The value of these premiums is available on our website at A2SF.org under Support/Individual Contributions. Please contact (734) 994-5999 with questions or visit us at 310 Depot Street, #3, Ann Arbor, MI 48104.

SUPPORT your FESTIVAL



HELP US GROW AND THRIVE!

The Ann Arbor Summer Festival would not be possible without your financial support.

As an independent nonprofit 501(c)(3) organization, the average cost of producing the festival each year is \$1.5 million. Earned revenue from ticket and beverage sales covers only 60 percent of the total expense; support from corporate sponsors, foundations, government agencies, and individual donors makes up the balance.

Whether you have contributed financially, volunteered your time, attended an indoor performance, or enjoyed Top of the Park's admission-free activities, you are part of the network that supports the festival in a meaningful way. Thank you! We hope we can count on your continued support or new support if you haven't participated in the past.

To learn more about individual, foundation and corporate giving, estate planning, our endowment fund, donor recognition, and partnership opportunities, please visit A2SF.org. For more information or to discuss a specific gift, please contact Beth Johnson, Director of Development, at (734) 994-5999 ext. 202 or Johnson@A2SF.org.



The lists on the previous pages reflect donations received during the 2011 calendar year. End of year gifts and other gifts postmarked on or after 1/1/12 will be acknowledged in the 2013 program. We apologize for any omissions or misspellings. Please let us know of any errors so we may correct them.

Ann Arbor's fine
wine legacy
continues with
unique, high value
imported wines
**available at your
favorite retailers
& restaurants**
across town and
the state



www.uswineimports.com

Summertime. Family Time. Anytime.

Elegant accommodations, superior service, and a desirable location for visiting the University of Michigan, the eclectic downtown Ann Arbor area, Ypsilanti's Historic Depot Town, and Detroit.

All guests can enjoy the hotel's large indoor pool, hot tub, and sauna.



610 Hilton Blvd.
Ann Arbor, MI 48108
734-761-7800

Celebrate Summer



Look & Feel Your Best for Less This Summer!

10% off any Salon & Spa Service

Call 734-712-6161 for an appointment.

Inspirit Salon & Spa

*Located inside the main entrance of
St. Joseph Mercy Ann Arbor.*

5301 McAuley Drive
Ypsilanti, MI 48197

*May not be combined with other offers.
Please present coupon at time of service.
Offer expires July 31, 2012.*



Find us on
Facebook



stjoeshealth.org/inspirit

 **Inspirit**
Salon & Spa

"Bright ideas
from a
slightly bent
mind."

Ann Arbor News

**DAVID
ZINN**

**Illustration
& Design**

dszinn@me.com • www.zinnart.com

**ANN ARBOR
RESTAURANT
WEEK** JUN. 10 - 15
2012

**ONE PRICE DINING,
ONE WEEK,
SEVERAL OPTIONS.**

\$12 for lunch • \$25 for dinner
Some restaurants offering 2 for 1

www.annarborrestaurantweek.com

PRESENTED BY:



BROUGHT TO
YOU BY:



EVENT SPONSORS:



ANN ARBOR
ISPY

HONIGMAN®

Honigman and our Ann Arbor attorneys
are proud to support the
2012 Ann Arbor Summer Festival



Our Ann Arbor Attorneys

Fernando Alberdi

Jennifer Anderson

Christopher Ballard

Cindy Bott

Audrey DiMarzo

Sean Etheridge

Tom Forster

Richard Hoeg

Michael Huget

Barbara Kaye

Kristopher Korzun

Leonard Niehoff

David Parsigian

Bea Swedlow

For more information, please contact David Parsigian
at 734.418.4250 or DParsigian@honigman.com.

HONIGMAN MILLER SCHWARTZ AND COHN LLP
DETROIT • ANN ARBOR • LANSING • OAKLAND COUNTY • KALAMAZOO
www.honigman.com

We're pleased to
support the talent of the
performers, staff and
volunteers of the Ann
Arbor Summer Festival.

**IBEW
NECA 252**

(734) 424-0978

Please visit our web site
for a complete list of our
electrical contractors.
www.ibewneca252.org

Your IBEW Local 252
union electricians and
regional NECA electrical
contractors. Proud
members of this
community.

Trust experienced
professionals for all
of your projects.

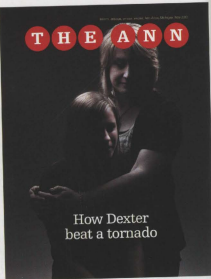
- residential
- commercial
- voice/data/video
- industrial



NECA

Quality LOOK FOR THE WIRE
IN YOUR WIREWORKING
ELECTRICAL PROTECTION PLAN

THE ANN



How Dexter
beat a tornado

**READ US MONTHLY IN
THE NEW YORK TIMES**



RED HAWK
BAR & GRILL

Open Late Thursday, Friday & Saturday

316 S. State Street Full Service
@ North University Full Menu
734-994-4004 Full Bar
www.redhawkann Arbor.com

revive
full service café
+
replenish
neighborhood market

619 East University @ Zaronog Place
734-332-3366 • www.revive-replenish.com



Hearing aids: glasses for your ears

Problems seeing? Get help.
Problems hearing? Get help.
It's just that simple.

Hearing loss is gradual and can occur at any age. A simple hearing test will show if any loss has occurred, and our expert Audiologists will help determine the best steps to take.

Call today for an appointment **800-851-6672**.



**M-O-S-A Hearing Aid Centers
& Audiology Services**

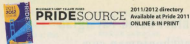
Reichert Health Center, Suite 2016
www.mosaaudiology.com



BTL
Between! Lines MICHIGAN'S LIT & NEWS SOURCE SINCE 1993

is a proud sponsor of the
Ann Arbor Summer Festival

WEEKLY NEWS FOR LIBRARIANS, GAYLS, BIFERALS, TRANSGENDERS AND FRIENDS



Check out our newly designed website at
PRIDESOURCE
.com



PRIDE SOURCE
MEDIA GROUP

Reporting our stories since 1992

Find us on
Facebook

Join us on Facebook for updates
about events like Ann Arbor Pride

Advertise with us, **GET RESULTS.**



Also publishers of:



Parent
Ending
FAMILY

current
Ann Arbor
FAMILY

3003 Whitnower Ave., Suite 3
Ann Arbor, MI 48104
734.668.8244

1120 Adams St.
Tulsa, OK 74104
419.244.9839

Where Community Comes Together



Catch the Fun!



Something for Everyone

Explore new interests

• Make new friends

• Enjoy the outdoors

• Neighborhood locations

• Great instructors

• Adults, youth
and families

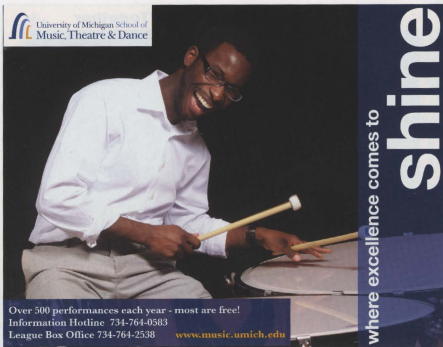
www.aareced.com



Online Classes • Adult Team Sports • Lifelong Learning • Adapted Recreation

Youth Sports • School Age Child Care • Summer Day Camps • First Steps Washenaw

Ann Arbor Public Schools • Community Education & Recreation • 734.994.2300



Over 500 performances each year - most are free!

Information Hotline 734-764-0583

League Box Office 734-764-2538

www.music.umich.edu

where excellence comes to
shine



Whole Foods Market

is proud to sponsor the

Ann Arbor Summer Festival

990 W. Eisenhower Pkwy. - 3135 Washtenaw Ave.



Emerson
SCHOOL

The Emerson School
Educational Experience is **UNEQUALED.**
See for yourself.



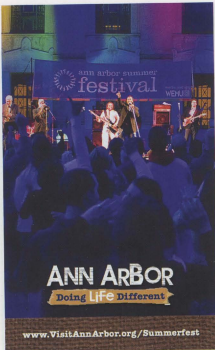
Please contact the Admissions Office
to arrange a tour.

734-665-5662 ext 306

admissions@emerson-school.org

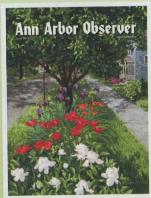
Your Child's Bright Future Begins Here!

An independent school for gifted and for academically talented students in grades K-8
5425 Scio Church Road Ann Arbor, MI 48103 www.emerson-school.org



www.VisitAnnArbor.org/Summerfest

Local. Trusted. Essential.



Look for Summer Festival events
in Ann Arbor's most
comprehensive events calendar.
AnnArborObserver.com

News and commentary
that make every car
a smart car.

Michigan Radio is proud to support
the Ann Arbor Summer Festival

Understand Michigan...

NEWS • POLITICS • ARTS • BUSINESS • ENVIRONMENT



91.7 FM Ann Arbor/Detroit
michiganradio.org



Your NPR news station **npr**

follow the
beau  **fairy**

social network butterflies **SAVE BIG THIS SUMMER**
find us on facebook and twitter or sign up for text messages

Douglas J

You will receive a new
beauty offer every Monday
ALL SUMMER LONG!

Text in to your preferred
location or subscribe to
both and get even more
special offers!

TEXT
AA SALON
TO 69302

-OR-

TEXT
AA INSTITUTE
TO 69302



Use your smart
phone to scan
this code and
follow us on
Facebook and
Twitter.

Douglas J Salon • 500 E Liberty
Douglas J Aveda Institute • 333 Maynard St
both located in Downtown Ann Arbor
douglasj.com/followus

board

Board of Trustees

Erin W. Bakker, Chair
 Jerold Lee, Vice Chair
 Kevin S. McDonald, Secretary
 Michael S. Dubin, Treasurer
 James A. Kosteva, Hon. Past Chair

Lolani Auer
 Christie Wong Barrett
 Lisa Bee
 Sally Churchill
 Paul Cousins
 Tom Crawford
 John W. Farah, DDS, PhD.
 Peter Fayonian
 Erica Fitzgerald
 Dawn H. Foerg
 Stephanie Blackburn Freeth
 Linda Girard
 Susan M. Gott
 John Harthe
 Mary Kerr
 Jon Kinsey
 Wendy Lawrence
 Kenneth Magee
 Sudha Maheshwari
 Margaret B. McKinley
 Anthony Y. Nam
 Kimberly L. Scott
 Rich Sheridan
 Ellie Serras
 Daniel Washington

Trustees Emeriti

Paul C. Boylan
 George D. Goodman
 Margaret Massialas
 J.P. Weidenbach

Festival Society

(Former Trustees)

Paula Allen-Mearns
 Arnold Anenson
 Lisa Baker
 Mili Baranowski*
 Karl C. Barstich
 H. David Barn
 Frank Beaver
 Louis D. Belcher
 Rodney F. Benson
 Joel S. Berger
 Karen Berger
 William Bess
 Lisa L. Borgsdorf

Paul C. Boylan
 Elizabeth S. Brater
 John Russell Brown
 Mario Calabro
 Susan Chandler
 Donald S. Chisholm
 John C. Clark
 Erica Kirchner Colbe
 Phil Cole
 Jeffrey J. Colton
 Howard J. Cooper
 Alan G. Colzin
 Ronald M. Cresswell
 John H. D'Arms*
 Jay DeLa
 Eunice M. Debbi
 Stephen B. Dobson
 Deanna R. Dorser
 John Eadie
 Karen Edwards
 Rosalie R. Edwards*
 Beth S. Elkins
 Julie Ellison
 Walter Eysaenick*
 Kenneth C. Fischer
 Jessica K. Fogel
 Beatrice Fox
 Robert Forman
 Erik Fredrickson
 Julie Fritz
 Patricia M. Garcia
 Sadie B. Garner
 George D. Goodman
 Beth Halloran
 Anne Hampton-Hawkins
 Charlotte M. Hanson
 Randy J. Harris
 Walter Harrison
 Harlan Hatcher*
 Matthew R. Howard
 James R. Irwin
 Ejner Jensen
 Gerald Jernigan*
 Christopher Kendall
 Richard L. Kennedy*
 Constance M. Kinneer
 John Kott
 Ira Konigsberg
 William B. Krumm*
 John K. Lawrence
 Judith W. Malcolm
 Alan M. Mandel
 Jennifer Martin
 Margaret Massialas
 John H. Matlock
 Evan Maurer
 Jerry A. May
 Frederick W. Mayer
 Susan McClanahan

Jayne Miller
 Ronald G. Miller
 Y. Jamie Mistry
 Thomas S. Monaghan
 Lester P. Monts
 Bruce S. Meyer
 Janet Multivern
 Patrick N. Naywell
 Shirley C. Neuman
 John Neville-Andrews
 Ellen Offen
 Karen Kayika O'Hall
 Mark O. Ormel
 Roberta R. Palmer
 Helen A. Peters
 Edward C. Pierce*
 Susan N. Pollay
 Patricia Pooley
 Eugene B. Pounder, Founder*
 Doris Preston
 Agnes Reading
 Gail W. Reक्टर*
 James S. Roece
 Donovan Reynolds
 Ellen H. Rowe
 Arne K. Rubin
 Ralph Santaripa
 Jeffrey A. Schoenler
 Peter F. Schork
 Ann Sneed Scriber
 Thomas J. Scriber
 Hasan J. Schumacher
 Ingrid B. Sheldon
 Angeline Smith
 Allan F. Smith*
 Louis Smith
 Jorge A. Solis
 Peter Spurling
 Joyce Spuris
 Burnette Staebler*
 Susan J. Shaney
 Alfred A. Stuart
 Lisa A. Tedesco
 Estelle Tiley*
 Jane Von Voigtlander
 J.P. Weidenbach
 Elise I. Weisbach
 Jerry A. Weisbach*
 Ruth T. Whitaker*
 Lynn E. White
 Timothy D. White
 David D. Wierman
 Frank C. Williams
 Karen L. Wolff
 Phyllis Wright*

*Indicates deceased trustee

Festival Committees

Community Engagement

Mary Kerr, Co-Chair
 Kevin McDonald, Co-Chair
 Erik Bakker
 Lisa Bee
 John Farah
 Erica Fitzgerald
 Linda Girard
 Kevin Heslip
 Sudha Maheshwari
 Peter Scott

Finance and Sustainability

Tom Crawford, Co-Chair
 Mike Dubin, Co-Chair
 LeAnn Auer
 Erik Bakker
 Conne Kinneer
 Jon Kinsey
 Jim Kosteva
 Tony Nam
 Jim Reece
 Peter Schork

Fund Development

Paul Cousins, Co-Chair
 Dawn Foerg, Co-Chair
 Erik Bakker
 Christie Barrett
 Stephanie Freeth
 Wendy Lawrence
 Margie McKinley
 Ellie Serras
 Bruce Thomson
 Lydia Thomson

Governance & Nominations

Margie McKinley, Co-Chair
 Peter Fayonian, Co-Chair
 Erik Bakker
 Paul Cousins
 Jim Kosteva
 Jerry Law
 Kevin McDonald
 Kim Scott



If You Aren't at Your Last Job, Why Is Your 401(k)?

Leaving a 401(k) with a previous employer could mean leaving it alone with no one to watch over it.

At Edward Jones, we can explain options for your 401(k) and help you select the one that's best for you. If you'd like to roll it over to an Edward Jones individual Retirement Account (IRA), we can help you do it without paying taxes or penalties. And you can feel confident that someone is looking out for you and your 401(k).

To find out why it makes sense to talk with Edward Jones about your 401(k) option, call or visit your local financial advisor today.

Jill Crause

Financial Advisor
 2330 S. Washtenaw Suite A
 Ann Arbor, MI 48104
 734.975.0366

www.edwardjones.com Member SIPC Member FDIC



Ann Arbor I.A.T.S.E. Local 395 Theatrical Employees

Proud to be part of the Ann Arbor Arts Community for over 100 years.

734.845.00550

Allergy & Immunology Associates of Ann Arbor

(734)434-3007
www.annarborallergy.com

DINOSAURS MAY BE EXTINCT

But Not GRASS & RAGWEED

- We take all major insurances
- Flexible scheduling in 5 offices
- Pediatric Asthma Specialists

highlandergraphics.com

environmental design • displays • signs

Find us on Facebook.

special thanks

Jim Adams, Quast Productions
Matthew Albrado
Chris Arnall, 107zone
Jean Arnold and Frank Uhlis,
U-M Media Services
Ingrid Ault, Think Local First
Cal Arison, Coca-Cola
Hank Bays, U-M Office of the Executive VP
Erik Bakker
Martin Bandylek, 107zone
Nina Barlow
Christie Barrett
Nancy Barton, Wilis & Jurasek
Eric Bassay
Susan Beilinson, Whole Foods
Jack Bernard,
U-M Office of the General Counsel
Lise Berry and Russ Collins, Michigan Theater
Jeffrey Beyerford
Sarah Wilman, UMS
John Berman, 107zone
Lisa Bergdorf, UMMA
Jon Bullock, U.S. Wine Imports
Betsy Cain
Susan Campos, Rackham Graduate School
Julie Carlisle, Michigan Oral Surgeons
Denise Carter
Laurel Champion, AnnArbor.com
Sgt. Michelle Chatel,
U-M Dept of Public Safety
Shelagh Chopynski, MI Radio
Julie Cole, Ann Arbor Observer
Janet Collins
Howard Cooper
Alan Cozins
Paul Cousins
Jeff Crause, Edward Jones
Matt Czigler, Phire Branding
Suzanne Davidson, UMS
Christina Daniels
Tony Dearing, AnnArbor.com
Denise Dibbs
Joe Dougherty, DidaKilas
Michael Dubin
Bruce Duncan, Cosmetics Bank
Doug Edwards, University Productions
Peter Eichler, Douglas J Companies
Matt Engelbert
Adrienne Escamilla
John and Jackie Farak, Enquire Dental
Maureen Farley McMahon
Shari Faulhaber, Campus Inn
Joe Fazio, Millie Carfield Poddock & Stone
Eric Fitzgerald
Kristen Freshney, Greenbills School
Steve Gooderman, Enlighten
Patricia Garcia, Ann Arbor Observer
Laura Gelfand, Dance Revolution
Rachel Giddings, Proformance
Pete Goodman
Sue Gott, University Planner

Tony Gotzko, Phire Branding
Judy Graf, UMS
Matt and Rose Greff, Arbor Brewing Company
Ann Crave
Susan Guszynski
Steve Gutman and Family
Amy Harris, Exhibit Museum of Natural History
Mike Harrison and Rebecca Priest,
UM Health System
Donald Harrison, Ann Arbor Film Festival
Kevin Heslop
Tom Heywood, SSAA
Sara Higgins, City of Ann Arbor
John Hume, Phire Branding
Dan Huettnerberg, The Moveable Feast
Rachel Jackson, Phire Branding
Joe Johnson, RSG
Patti Juson, Bank of Ann Arbor
Nancy Kerr, Ann Arbor Area CVB
Neil Kestler, JR
Connie Kinnear
Jim Kirk, UM Credit Union
Myra, Riz and Max Klarman
Jim Kustelea, U-M Community Relations
Lucy Ann Lance
Paul Lavinson and Sue Burke, Grazi
Bry LaRue, Power Center
Wendy and Lou Lorraine
Jeffy Lee
Duanne Lee, U-M Fire Inspector
Les Legacki, Elastolite
Dr. Harvey Lee, Ann Arbor Allergy
Joan and Jim Libs
Jim Libs, Mandus & Mandus
Jim Lillis, Aerial Enterprises
Joe Lloyd
Elise Lady
Cindy Mahalik, Toyota
Sudha Maheshwari
Hans Maier, Bank of Ann Arbor
Alex Marr
Robert Marshall, Hamlet Construction
Tom Marschall, Bank of Ann Arbor
David Martel, AnnArbor.com
Mike Martin, Fest Martin
Kevin McDonald
Leslie McGraw
Tom McKerns, ECO PHYSICS INC.
Jesse Moran, AnnArbor.com
Michael Michien
Sam Moran
Kit Mergeson, OSW
Mary Morgan, The Ann Arbor Chronicle
Molly Motherwell, WEMU
Rishi Narayan, Underground Printing
Dean Neuh, WISC Local 95
Ben Neudham, AnnArbor.com
Eli Neiburger and Tim Grimes,
Ann Arbor District Library
Mary Ann Nesley, Whole Foods
Jane and Bruce Ostaben

Nancy Palgo
Lynn Parker, Ann Arbor District Library
Geoffrey M. Perkins
Jill Pinesak
Alicia Polidano
Susan Pelay and Joe Meehouse, DDA
Myra and Pyle Poplin, The Ann
Arbor Garden, The Neutral Zone
Jim and Bonnie Rocco
Amy Reyes, Kensington Court
Shannon Rice, University Productions
Maureen Riley, Ann Arbor Street Art Fair
Diane Robinson, Fifth Third
Brian Roddy
Mike Roach, Phire Branding
Sgt. Lyle Saboti, Ann Arbor Police Department
Justin Salter, Aerial Enterprises
Peter Schork, Ann Arbor State Bank
Kim Scott, Miller Carfield Poddock & Stone
Rebecca Siner and Darlene Jones,
Parking Services
Elle and Dennis Sernas, Main Street Ventures
Ryan and Sisi, Sesi Motors
Joan Shea
Barbara Silverwiler, Miller Carfield
Poddock & Stone
Mary Catherine Smith, WEMU
Stacy Smith, Paragon Display Group
Jeanette Stovess, Sunwell Realtors
Jan Stevenson, Between the Lines
Deborah Sulowski, U-Litro
Ed Surovic, Sunwell Realtors
Murt Thomas, MI Auditorium
Naura Thompson, MSAA
Brian Tomasic, WCBN
Laurie Twist
Linda and Bruce Thomson
Marsha Wachsopf, Reinhard Realty
John Warty and Kit Mergeson, OSW Inc.
Eugene Weircoff, U-M Dept of Public Safety
Brian Wiesman, Columbia Asset Mgmt
Janet Weiss, Rackham Graduate School
Dianne Widomski and the
Power/All House Staff
Mary Alice Willard, Burton Tower Facilities
Debra Wilson, City of Ann Arbor
Matt Wilson, Highlander Graphics
Paula Wilson, Ann Arbor Allergy
Kathy Wood, Ropnick
Marshall Wysocki
Sam Yecke, Michigan League
Linda Yoh, WEMU
Scott Young and Carolyn Markey, GM
Ana Zalacki and Rene Sullivan,
Facilities & Operations
Bill Zimsky, Crazy Wafers Bookstore
Mainstage Ushers
Top of the Park Staff
Top of the Park Volunteers

festival team

Administrative Staff
Robb Wolfe Executive Director
Amy Nesbitt General Manager
Beth J. Johnson Development Director
Alex Marr Programs Assistant
Betsy Cain
Digital Media and Graphics Assistant
Laurie Twist
Digital Media and Graphics Assistant
Maureen McMahon Administrative Assistant
Sue Antonick Administrative Assistant

Mainstage Staff
Jeff Beyerford Production Manager
Doug Edwards Production Consultant
Jim Lillis Head Audio Engineer
Barry LaRue
Power Center House Technician
Kurt Thoma
MI Auditorium House Technician
Susan Guszynski
Mainstage Artist Services Manager
Anne Grove
Mainstage Artist Services Manager
Brooke Lundin
Mainstage Artist Services Assistant
Rebecca La Duca
Mainstage Artist Services Assistant
Kathryn Pamela
Mainstage Artist Services Assistant
Paul Foety
Mainstage Artist Services Assistant
Dean Neuh
IATSE Local 395 Business Representative

Festival Ticket Office Staff
Jenny Oat Ticket Services Manager
Suzie Devonson Ticket Services Manager
Adrienne Escamilla Ticket Office Associate
Katie Nix Box Office Assistant
Sarah Wilber Group Sales Coordinator

Student Employees
Brian Giebler
Tom Hausier
Jim Krause
Mary Martin
Stevan Reih
Derek Scott
Willie Sullivan

Venue & Ushering Staff
Dianne Widomski
Performance Halls House Mgr
Sara Sanders Front of House Coordinator
Juli Pinesak Usher Coordinator
Jane and Bruce Ostaben Assistant Ushers
Brian Roddy Assistant Ushers

Top of the Park Staff
Steve Gutman
Top of the Park Site Manager
Mike Michien Rackham Stage Manager
Elise Lady
Hospitality and Private Party Manager
Pete Goodman
Top of the Park Staffing Manager

Denise Dibbs
Top of the Park Financial Assistant
Marshall Wysocki
Top of the Park Financial Assistant
Leslie McGraw
Volunteer Greeter Coordinator
Jean Arnold and Frank Uhlis Media Services
Jim Adams
Top of the Park Lighting Director
Justin Saylor
Top of the Park Audio Engineer
Nick Nagarka Grove Audio Engineer
Breana Ostander Greeter Intern
Christina Campbell Kizitone Intern
Shelvie Rick Productions Intern
Christina Daniels Lounge Hostess
& Social Media
Alex Kime Rock the Wall Intern
Alex Kime Rock the Wall Intern
Consultants
Alison Poldano Bookkeeper
Diana Kimes Technology & IT Consultants
Mike, Cathelin, Poddock & Stone, PLC Attorneys
Wilis & Jurasek, P.C.
Auditors & Tax Advisors
Jared Collins and Eric Bassay Database Support

credits

Phire Branding
Festival Branding

University Lithographers
Festival Printing

Myra Klamars
Festival Photography

Highlander Graphics
Festival Signage & Display

Wendy Martin
VIP Donor Photography

